

# 5

## Mechanische Teile Mechanical parts



Schlauch-Verschraubungen  
Screw joint for tubes

Seite 304



Ventile  
Valves

Seite 306



Gruppenzubehör  
Group accessories

Seite 308



Manometer  
Manometer

Seite 312



Wasseraufbereitungs-Hilfsmittel  
Water softener accessories

Seite 315

## CNS-Flex Schläuche

### Stainless steel-Flex hoses

Norm/Standard

EN50084-DIN-VDE 0700/600

Zulassungen/Registrations: DVGW, SVGW, KIWA, CST Bat

#### Technische Daten:

#### Technical data:

Arbeitsdruck: 10bar

Prüfdruck: 32bar

Platzdruck: 95bar

Temperatur: max 110°C

Nennweite: DN6 Innen 6mm

DN8 Innen 8mm

DN10 Innen 9,3mm

DN12 Innen 12mm

Operation pressure: 10bar

Test pressure: 32bar

Burst pressure: 95bar

Temperature: max 110°C

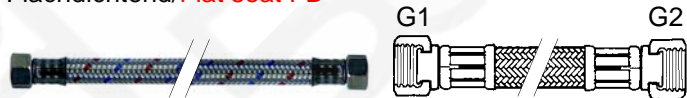
Size: DN6 Inside 6mm

DN8 Inside 8mm

DN10 Inside 9,3mm

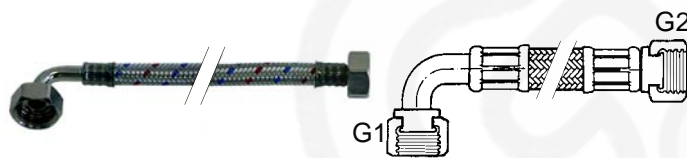
DN12 Inside 12mm

#### Flachdichtend/Flat seat FD



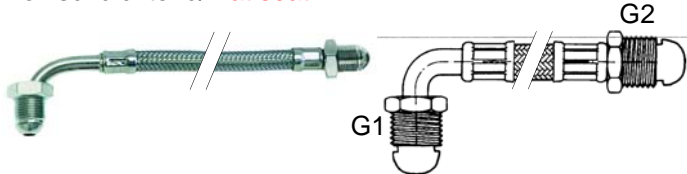
| Pos. Item | Bestell-Nr. Order-No. | Nennweite Size | G1   | G2   | Länge Length |
|-----------|-----------------------|----------------|------|------|--------------|
| 1         | 520610                | DN6            | 1/8" | 1/8" | 300mm        |
| 2         | 520611                | DN6            | 1/8" | 1/8" | 600mm        |
| 3         | 540265                | DN10           | 3/8" | 3/8" | 300mm        |
| 4         | 540266                | DN10           | 3/8" | 3/8" | 500mm        |
| 5         | 520568                | DN10           | 3/8" | 3/8" | 750mm        |
| 6         | 520567                | DN10           | 3/8" | 3/8" | 1000mm       |
| 7         | 520612                | DN12           | 1/2" | 1/2" | 1000mm       |
| 8         | 520613                | DN12           | 1/2" | 1/2" | 1500mm       |
| 9         | 520614                | DN12           | 3/4" | 3/4" | 1000mm       |
| 10        | 520615                | DN12           | 3/4" | 3/4" | 1500mm       |

#### Flachdichtend/Conical seat KD



| Pos. Item | Bestell-Nr. Order-No. | Nennweite Size | G1   | G2   | Länge Length |
|-----------|-----------------------|----------------|------|------|--------------|
| 1         | 520569                | DN8            | 3/8" | 3/8" | 370mm        |
| 2         | 520570                | DN8            | 3/8" | 3/8" | 2000mm       |
| 3         | 520563                | DN10           | 1/2" | 1/2" | 1000mm       |
| 4         | 520564                | DN10           | 1/2" | 1/2" | 1500mm       |
| 5         | 520565                | DN10           | 1/2" | 1/2" | 2500mm       |
| 6         | 520005                | DN10           | 3/4" | 3/4" | 1000mm       |
| 7         | 520006                | DN10           | 3/4" | 3/4" | 2500mm       |
| 8         | 520008                | DN12           | 3/4" | 3/4" | 1500mm       |
| 9         | 520009                | DN12           | 3/4" | 3/4" | 2500mm       |

#### Konischdichtend/Flat seat FD



| Pos. Item | Bestell-Nr. Order-No. | Nennweite Size | G1   | G2   | Länge Length |
|-----------|-----------------------|----------------|------|------|--------------|
| 1         | 520623                | DN8            | 3/8" | 3/8" | 300mm        |

#### Konischdichtend/Conical seat KD



| Pos. Item | Bestell-Nr. Order-No. | Nennweite Size | G1   | G2   | Länge Length |
|-----------|-----------------------|----------------|------|------|--------------|
| 1         | 520616                | DN6            | 1/8" | 1/8" | 370mm        |
| 2         | 520617                | DN6            | 1/8" | 1/8" | 1500mm       |
| 3         | 520572                | DN8            | 3/8" | 3/8" | 500mm        |
| 4         | 520600                | DN8            | 3/8" | 3/8" | 750mm        |
| 5         | 520601                | DN8            | 3/8" | 3/8" | 1000mm       |
| 6         | 520602                | DN8            | 3/8" | 3/8" | 1500mm       |
| 7         | 520603                | DN8            | 3/8" | 3/8" | 2000mm       |

#### Konischdichtend/Conical seat KD



| Pos. Item | Bestell-Nr. Order-No. | Nennweite Size | G1   | G2   | Länge Length |
|-----------|-----------------------|----------------|------|------|--------------|
| 1         | 520604                | DN8            | 3/8" | 3/8" | 500mm        |
| 2         | 520605                | DN8            | 3/8" | 3/8" | 1000mm       |
| 3         | 520606                | DN8            | 3/8" | 3/8" | 1500mm       |
| 4         | 520607                | DN8            | 3/8" | 3/8" | 2000mm       |

#### Flachdichtend/Flat seat

#### Konischdichtend/Conical seat



| Pos. Item | Bestell-Nr. Order-No. | Nennweite Size | G1   | G2   | Länge Length |
|-----------|-----------------------|----------------|------|------|--------------|
| 1         | 520618                | DN8            | 3/8" | 3/8" | 300mm        |
| 2         | 520619                | DN8            | 3/8" | 3/8" | 500mm        |
| 3         | 520620                | DN8            | 3/8" | 3/8" | 750mm        |
| 4         | 520621                | DN8            | 3/8" | 3/8" | 1000mm       |
| 5         | 520622                | DN8            | 3/8" | 3/8" | 1500mm       |

#### Dichtungen/VPE 10 Stck./Gaskets/pack 10 pcs.



| Abb. Pict. | Bestell-Nr. Order-No. | G    | Abb. Pict. | Bestell-Nr. Order-No. | G    |
|------------|-----------------------|------|------------|-----------------------|------|
| 1          | 521138                | 3/8" | 1          | 520054                | 3/4" |
| 1          | 520055                | 1/2" | 2          | 520053                | 3/4" |

## Schläuche

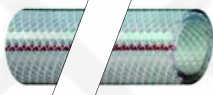
### Hoses

Ablaufschläuche, VPE/30m/Outflow hoses, 30m/Pack.



| Pos. Item | Bestell-Nr. Order-No. | Maße Meas. | Pos. Item | Bestell-Nr. Order-No. | Maße Meas. |
|-----------|-----------------------|------------|-----------|-----------------------|------------|
| 1         | 520034                | 12 x 18mm  | 4         | 520037                | 18 x 25mm  |
| 2         | 520035                | 14 x 20mm  | 5         | 520038                | 20 x 27mm  |
| 3         | 520036                | 16 x 23mm  |           |                       |            |

PVC-Schläuche mit SK-Zeichen/PVC hoses with SK-sign



| Pos. Item | B.-Nr. O.-No. | Maße Meas. | VPE Pack. | Pos. Item | B.-Nr. O.-No. | Maße Meas. | VPE Pack. |
|-----------|---------------|------------|-----------|-----------|---------------|------------|-----------|
| 1         | 520030        | 6 x 12mm   | 10m       | 3         | 520049        | 8 x 14mm   | 10m       |
| 2         | 520048        |            | 20m       | 4         | 520144        | 8 x 14mm   | 20m       |

Silikon-Schläuche/Silicon hoses



| Pos. Item | B.-Nr. O.-No. | Maße Meas. | VPE Pack. | Pos. Item | B.-Nr. O.-No. | Maße Meas. | VPE Pack. |
|-----------|---------------|------------|-----------|-----------|---------------|------------|-----------|
| 1         | 520242        | 4 x 7mm    | 5m        | 3         | 530552        | 8 x 14mm   | 5m        |
| 2         | 530550        | 6 x 10mm   | 5m        | 4         | 530555        | 12 x 18mm  | 5m        |

Silikon-Schläuche mit Glasseidenumflechtung

Glass-silk braided silicon hoses



| Pos. Item | B.-Nr. O.-No. | Maße Meas. | VPE Pack. | Pos. Item | B.-Nr. O.-No. | Maße Meas. | VPE Pack. |
|-----------|---------------|------------|-----------|-----------|---------------|------------|-----------|
| 1         | 520023        | 6 x 12mm   | 5m        | 2         | 520024        | 9,5 x 16mm | 5m        |

Silikon-Schlauch mit Monofilumflechtung

Monofil braided silicon hose



| Pos. Item | Bestell-Nr. Order-No. | Maße Meas. | VPE Pack. |
|-----------|-----------------------|------------|-----------|
| 1         | 520025                | 12 x 19mm  | 5m        |

Nylonrohr/Nylon pipes



| Pos. Item | B.-Nr. O.-No. | Maße Meas. | VPE Pack. | Pos. Item | B.-Nr. O.-No. | Maße Meas. | VPE Pack. |
|-----------|---------------|------------|-----------|-----------|---------------|------------|-----------|
| 1         | 520091        | 4 x 6mm    | 2m        | 4         | 520251        | 4 x 6mm    | 50m       |
| 2         | 520031        | 4 x 6mm    | 5m        | 5         | 520252        | 6 x 8mm    | 5m        |
| 3         | 520026        | 4 x 6mm    | 10m       | 6         | 520253        | 6 x 8mm    | 50m       |

PVC-Schlauch/PVC hoses



| Pos. Item | B.-Nr. O.-No. | Maße Meas. | VPE Pack. | Pos. Item | B.-Nr. O.-No. | Maße Meas. | VPE Pack. |
|-----------|---------------|------------|-----------|-----------|---------------|------------|-----------|
| 1         | 520090        | 4 x 6mm    | 2m        | 7         | 570046        | 5 x 8mm    | 100m      |
| 2         | 520026        | 4 x 6mm    | 10m       | 8         | 520028        | 6 x 8mm    | 10m       |
| 3         | 570026        | 4 x 6mm    | 100m      | 9         | 570028        | 6 x 8mm    | 100m      |
| 4         | 520027        | 4 x 7mm    | 10m       | 10        | 520029        | 6 x 9mm    | 10m       |
| 5         | 570027        | 4 x 7mm    | 100m      | 11        | 570029        | 6 x 9mm    | 100m      |
| 6         | 520046        | 5 x 8mm    | 10m       | 12        | 520022        | 8 x 12mm   | 10m       |

Druckminderer/Reduction valve



| Abb. Pict. | Bestell-Nr. Order-No. | Beschreibung Description   |
|------------|-----------------------|--|
| 1          | 520271                | Druckminderer, 1/2", Export<br>Reduction valve, 1/2", Export                   |
| 2          | 520265                | Druckminderer, 1/2", DVGW zugelassen<br>Reduction valve, 1/2", DVGW registered |
| 3          | 520270                | Manometer, 0 - 15bar   |

Schlauchschellen CNS/Hose tightening stainless steel



|   |  |
|---|--|
| 1 | Band und Gehäuse-CNS 1.4016<br>Schraube-stahlverzinkt,<br>chromatiert, Bandbreite 9 mm<br>Belt and case-stainless steel 1.4016<br>Screw Zinc-coated Steel<br>Chromed, belt width 9mm |
| 2 | komplett aus CNS WN 1.4301<br>Bandbreite 9 mm<br>Stainless steel WN 1.4301/cpl.<br>Chromed, belt width 9mm   |

| Abb. Pict. | B.-Nr. O.-No. | VPE Pack | Bereich Area | Abb. Pict. | B.-Nr. O.-No. | VPE Pack | Bereich Area |
|------------|---------------|----------|--------------|------------|---------------|----------|--------------|
| 1          | 520110        | 10       | 8 - 12       | 1          | 520116        | 5        | 32 - 50      |
| 1          | 520111        | 10       | 10 - 16      | 1          | 520117        | 5        | 40 - 60      |
| 1          | 520112        | 10       | 12 - 20      | 1          | 520118        | 5        | 50 - 70      |
| 1          | 520113        | 10       | 16 - 25      | 1          | 520119        | 5        | 60 - 80      |
| 1          | 520114        | 10       | 20 - 32      | 2          | 520120        | 1        | 12 - 20      |
| 1          | 520115        | 10       | 25 - 40      | 2          | 520121        | 1        | 16 - 25      |

Schlauchschellen-Band/Schloss/  
Hose tightening belts/locks



| Pos. Item | Bestell-Nr. Order-No. |
|-----------|-----------------------|
| 1         | 520127                |



# Mechanische Teile/Mechanical parts

## Schlauchtüllen Rubberholder



| Abb. Pict. | Bestell-Nr. Order-No. | G G  | D D  | Abb. Pict. | Bestell-Nr. Order-No. | G G  | D D  |
|------------|-----------------------|------|------|------------|-----------------------|------|------|
| 1          | 520672                | 3/8" | 10mm | 3          | 520675                | 3/8" | 10mm |
| 2          | 520673                | 1/2" | 12mm | 3          | 520677                | 3/8" | 12mm |
| 3          | 520674                | 3/8" | 8mm  | 3          | 520676                | 1/2" | 12mm |

## Lötnippel Soldering nipples



| Abb. Pict. | Bestell-Nr. Order-No. | R R  |
|------------|-----------------------|------|
| 1          | 520653                | 6mm  |
| 1          | 520652                | 8mm  |
| 1          | 520651                | 10mm |
| 1          | 520650                | 12mm |

## Überwurfmutter Union nut



| Abb. Pict. | Bestell-Nr. Order-No. | G G  | D D  |
|------------|-----------------------|------|------|
| 2          | 520656                | 1/4" | 6mm  |
| 2          | 520655                | 3/8" | 13mm |
| 2          | 520654                | 1/2" | 12mm |

## Doppelkegel Double cone



| Abb. Pict. | Bestell-Nr. Order-No. | R R  |
|------------|-----------------------|------|
| 1          | 101286                | 6mm  |
| 1          | 101277                | 8mm  |
| 1          | 101278                | 10mm |
| 1          | 101273                | 12mm |

## Überwurfmutter Union nut



| Abb. Pict. | Bestell-Nr. Order-No. | G G  | D D  |
|------------|-----------------------|------|------|
| 2          | 520660                | 1/4" | 6mm  |
| 2          | 520659                | 3/8" | 8mm  |
| 2          | 101478                | 3/8" | 10mm |
| 2          | 520657                | 1/2" | 12mm |

## Doppelnippel Double nipples



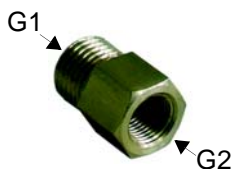
| Abb. Pict. | Bestell-Nr. Order-No. | G G  |
|------------|-----------------------|------|
| 1          | 520661                | 1/8" |
| 1          | 520662                | 1/4" |
| 1          | 520663                | 3/8" |
| 1          | 520664                | 1/2" |
| 1          | 520665                | 3/4" |

## Reduziernippel Reducing nipples



| Abb. Pict. | Bestell-Nr. Order-No. | G G         |
|------------|-----------------------|-------------|
| 2          | 520680                | 1/4" - 1/8" |
| 2          | 520681                | 3/8" - 1/8" |
| 2          | 520682                | 3/8" - 1/4" |
| 2          | 520683                | 1/2" - 3/8" |
| 2          | 520218                | 3/4" - 3/8" |
| 2          | 520208                | 3/4" - 1/2" |

## Reduzierungen Reductions



| Pos. Item | Bestell-Nr. Order-No. | G1 G1 | G2 G2 | Pos. Item | Bestell-Nr. Order-No. | G1 G1 | G2 G2 |
|-----------|-----------------------|-------|-------|-----------|-----------------------|-------|-------|
| 1         | 520690                | 1/8"  | 1/4"  | 7         | 520696                | 3/8"  | 1/2"  |
| 2         | 520691                | 1/8"  | 3/8"  | 8         | 520697                | 3/8"  | 3/4"  |
| 3         | 520692                | 1/4"  | 1/8"  | 9         | 520698                | 1/2"  | 3/8"  |
| 4         | 520693                | 1/4"  | 3/8"  | 10        | 520699                | 1/2"  | 1/2"  |
| 5         | 520694                | 3/8"  | 1/4"  | 11        | 520700                | 1/2"  | 3/4"  |
| 6         | 520695                | 3/8"  | 3/8"  |           |                       |       |       |

## Endkappen Ending caps



| Abb. Pict. | Bestell-Nr. Order-No. | G G  |
|------------|-----------------------|------|
| 1          | 520701                | 1/8" |
| 1          | 520702                | 1/4" |
| 1          | 520703                | 3/8" |
| 1          | 520704                | 1/2" |



| Abb. Pict. | Bestell-Nr. Order-No. | G G  |
|------------|-----------------------|------|
| 2          | 520705                | 1/8" |
| 2          | 520706                | 1/4" |
| 2          | 520707                | 3/8" |
| 2          | 520708                | 1/2" |

## T-Stücke T-pieces



| Pos. Item | Bestell-Nr. Order-No. | G G  | Pos. Item | Bestell-Nr. Order-No. | G G  |
|-----------|-----------------------|------|-----------|-----------------------|------|
| 1         | 520710                | 1/4" | 3         | 520712                | 1/2" |
| 2         | 520711                | 3/8" |           |                       |      |

## Minikugelhähne Small ball taps



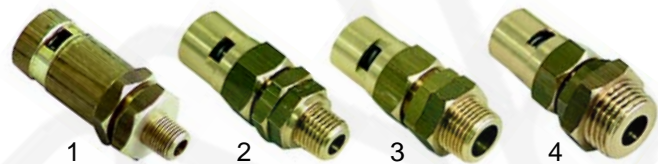
| Abb. Pict. | Bestell-Nr. Order-No. | G G  |
|------------|-----------------------|------|
| 1          | 520720                | 1/8" |
| 1          | 520294                | 1/4" |
| 1          | 520295                | 3/8" |
| 1          | 520296                | 1/2" |
| 1          | 520297                | 3/4" |



| Abb. Pict. | Bestell-Nr. Order-No. | G G  |
|------------|-----------------------|------|
| 2          | 520721                | 1/8" |
| 2          | 520722                | 1/4" |
| 2          | 520723                | 3/8" |
| 2          | 520724                | 1/2" |
| 2          | 520725                | 3/4" |

## Ventile Valves

Sicherheitsventile, 1,8bar/Safety valves, 1,8bar



| Abb. Pict. | Bestell-Nr. Order-No. | G G  | Abb. Pict. | Bestell-Nr. Order-No. | G G  |
|------------|-----------------------|------|------------|-----------------------|------|
| 1          | 529331                | 1/8" | 3          | 529312                | 3/8" |
| 2          | 529307                | 1/4" | 4          | 529306                | 1/2" |



| Abb. Pict. | Bestell-Nr. Order-No. | G G       | Abb. Pict. | Bestell-Nr. Order-No. | G G      |
|------------|-----------------------|-----------|------------|-----------------------|----------|
| 1          | 529309                | M18 x 1,5 | 3          | 529330                | M22 x 30 |
| 2          | 529308                | M19 x 1   |            |                       |          |

Plombiert/Sealed



| Abb. Pict. | Bestell-Nr. Order-No. | G G  | Zulassung Restriction |
|------------|-----------------------|------|-----------------------|
| 1          | 529316                | 3/8" | Ispel                 |
| 2          | 529332                | 3/8" | TÜV                   |
| 3          | 529310                | 1/2" | Ispel                 |

Diverse/Diverse



| Abb. Pict. | Bestell-Nr. Order-No. | Beschreibung Description | Zulassung Restriction | Passend für Suitable for |
|------------|-----------------------|--------------------------|-----------------------|--------------------------|
| 1          | 529346                | 3/8 Innen/Inside         |                       | Nuova Simonelli          |
| 2          | 529338                | 3/8", 1,5bar             | TÜV                   | Brasilia                 |
| 3          | 529827                | 1/2"                     |                       | Reneka                   |

Entlüftungsventile/Empty valve



| Abb. Pict. | Bestell-Nr. Order-No. | G G  | Pos. Item | Bestell-Nr. Order-No. | G G  |
|------------|-----------------------|------|-----------|-----------------------|------|
| 1          | 529303                | 1/4" | 3         | 529305                | 3/8" |
| 2          | 529304                | 1/4" |           |                       |      |

Cu-Dichtung/Cu-Gasket



| Abb. Pict. | Bestell-Nr. Order-No. | G G  | Abb. Pict. | Bestell-Nr. Order-No. | G G  |
|------------|-----------------------|------|------------|-----------------------|------|
| 1          | 529361                | 1/4" | 3          | 529348                | M19  |
| 2          | 529349                | 3/8" | 4          | 529360                | 1/2" |

Rückschlagventil/Return valve



| Abb. Pict. | Bestell-Nr. Order-No. | G G  | L/mm | Abb. Pict. | Bestell-Nr. Order-No. | G G  | L/mm |
|------------|-----------------------|------|------|------------|-----------------------|------|------|
| 1          | 529335                | 1/8" | 30   | 3          | 529301                | 3/8" | 38   |
| 2          | 529340                | 1/4" | 30   | 4          | 528790                | 3/8" | 43   |

Reduziert/Reduced



| Abb. Pict. | Bestell-Nr. Order-No. | Ein On | Aus Out | L/mm |
|------------|-----------------------|--------|---------|------|
| 1          | 528368                | 1/8"   | 1/4"    | 40   |
| 2          | 528365                | 1/8"   | 3/8"    | 40   |
| 3          | 529322                | 3/8"   | 1/4"    | 30   |

Expansionsventil/Expansion valve

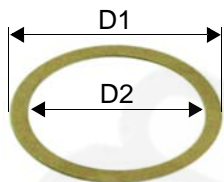


| Abb. Pict. | Bestell-Nr. Order-No. | G1 G1 | G2 G2 | L/mm |
|------------|-----------------------|-------|-------|------|
| 1          | 529341                | 1/8"  | 1/8"  | 24   |
| 2          | 529378                | 1/4"  | 1/4"  | 37   |
| 3          | 529337                | 1/4"  | 3/8"  | 49   |



| Pos. Item | Bestell-Nr. Order-No. | G1 G1 | G2 G2 | L/mm |
|-----------|-----------------------|-------|-------|------|
| 1         | 529329                | 3/8"  | Ø8mm  | 55   |

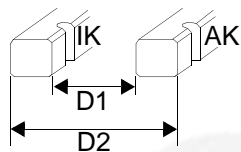
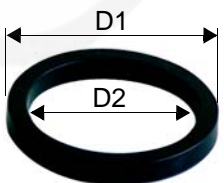
## Distanzeinlagen Space insertions



| Pos.<br>Item | Bestell-Nr.<br>Order-No. | D1/<br>mm | D2/<br>mm | Passend für<br>Suitable for  |
|--------------|--------------------------|-----------|-----------|--|
| 1            | 528048                   | 63        | 53        | San Marco  |
| 2            | 528084                   | 64        | 55        | Spaziale   |
| 3            | 528046                   | 67        | 58        | Astoria, Bezzera, Brasilia   |
| 4            | 528068                   | 69        | 57        | Carimali   |
| 5            | 528050                   | 73        | 59        | Astoria, Auora, Gaggia   |
| 6            | 528033                   | 71        | 58        | Brasilia, Cimbali, Espresso, Expobar, Faema, Futurmat, Italcrem, Mairali, Marzocco, Nuova Simonelli, Pavoni, Vibiemme, VFA-Express, Visacrem, Wega |

## Siebträgerdichtung Filter holder gasket

Norm/Standard

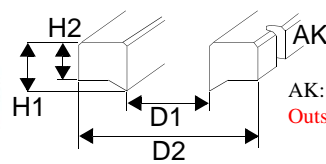
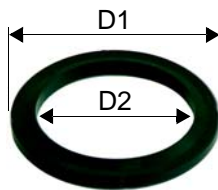


IK: Innenkerbe/  
Inside notch  
AK: Außenkerbe/  
Outside notch

| Pos.<br>Item | B.-Nr.<br>O.-No. | D1/<br>mm | D2/<br>mm | H/<br>mm | Kerbe<br>Notch | Passend für<br>Suitable for   |
|--------------|------------------|-----------|-----------|----------|----------------|---|
| 1            | 528038           | 64        | 52        | 5,5      | -              | San Marco   |
| 2            | 528041           | 64        | 52        | 6,5      | -              | San Marco   |
| 3            | 528059           | 64        | 53        | 5        | -              | Marcfi/ancas  |
| 4            | 528043           | 66        | 56        | 6        | -              | Astoria, Brasilia   |
| 5            | 528044           | 69        | 57        | 7,5      | -              | Carimali  |
| 6            | 528035           | 70        | 56        | 8        | -              | Cimbali   |
| 7            | 528076           | 70        | 56        | 8        | AK             | Cimbali   |
| 8            | 528083           | 70        | 57        | 8        | -              | Solenry   |
| 9            | 528040           | 70        | 57        | 8        | AK             | Brasilia  |
| 10           | 528042           | 72        | 56        | 8        | -              | Astoria, Gaggia   |
| 11           | 528054           | 72        | 56        | 8        | AK             | Astoria, Gaggia   |
| 12           | 528063           | 72        | 56        | 8,5      | -              | Astoria, Gaggia   |
| 13           | 528069           | 72        | 58        | 4,5      | -              | Nuova Simonelli   |
| 14           | 528047           | 72        | 58        | 7        | -              |   |
| 15           | 528060           | 72        | 58        | 7        | -              | Marcfi/Ancas  |
| 16           | 528061           | 72        | 58        | 9        | -              | Marcfi/Ancas  |
| 17           | 528049           | 72        | 56        | 9        | AK             | Auora   |
| 18           | 528030           | 73        | 57        | 8        | -              | Azkoyen, Bezzera, Brasilia, Conti, Espresso, Expobar, Faema, Futurmat, Italcrem, Mairali, Pavoni, Vibiemme, VFA-Express, Visacrem, Wega |
| 19           | 528070           | 73        | 57        | 8        | IK             |   |
| 20           | 528031           | 73        | 57        | 8,5      | -              |   |
| 21           | 528053           | 73        | 57        | 8,5      | AK             |   |
| 22           | 528032           | 73        | 57        | 9        | -              |   |
| 23           | 528034           | 72        | 57        | 8        | AK             |   |
| 24           | 528087           | 74        | 57        | 9        | -              | Unic  |
| 25           | 528037           | 74        | 58        | 9        | -              | Reneka  |

## Siebträgerdichtung Filter holder gasket

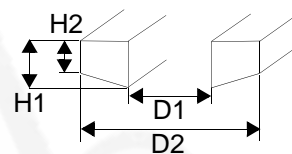
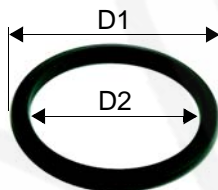
Mit Wulst/With roll



AK: Außenkerbe/  
Outside notch

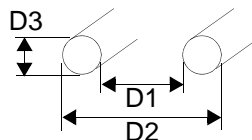
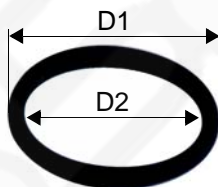
| Pos.<br>Item | Bestell-Nr.<br>Order-No. | D1/<br>mm | D2/<br>mm | H1/<br>mm | H2/<br>mm | Passend für<br>Suitable for |
|--------------|--------------------------|-----------|-----------|-----------|-----------|-----------------------------|
| 1            | 528065                   | 72        | 55        | 8,5       | 6,5       | Marzocco                    |
| 2            | 528066                   | 72        | 55        | 9         | 7         | Marzocco                    |

## Konisch/Conical



| Pos.<br>Item | Bestell-Nr.<br>Order-No. | D1/<br>mm | D2/<br>mm | H1/<br>mm | H2/<br>mm | Passend für<br>Suitable for |
|--------------|--------------------------|-----------|-----------|-----------|-----------|-----------------------------|
| 1            | 528067                   | 66        | 56        | 6         | 4         | Brasilia                    |
| 2            | 528036                   | 71        | 56        | 8,5       | 6,5       | Cimbali                     |

## O-Ring/O-ring

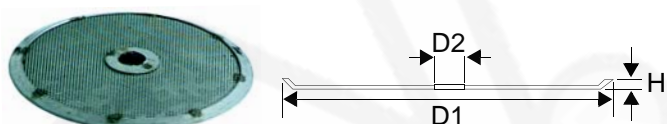


| Pos.<br>Item | Bestell-Nr.<br>Order-No. | D1/<br>mm | D2/<br>mm | D3/<br>mm | Passend für<br>Suitable for |
|--------------|--------------------------|-----------|-----------|-----------|-----------------------------|
| 1            | 528045                   | 66        | 56        | 5,34      | Brasilia, Elektra           |



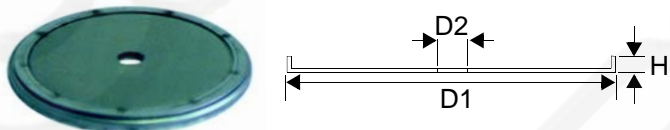
## Duschsiebe Shower sieves

Norm/Standard



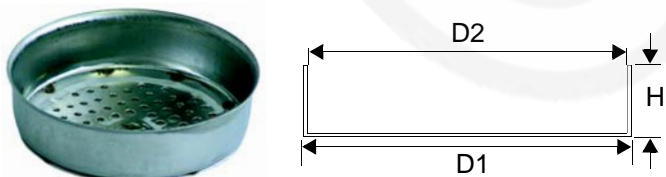
| Pos.<br>Item | Bestell-Nr.<br>Order-No. | D1/<br>mm | D2/<br>mm | H/<br>mm | Passend für<br>Suitable for |
|--------------|--------------------------|-----------|-----------|----------|-----------------------------|
| 1            | 529088                   | 48        | 5         | 2        | San Marco                   |
| 2            | 528884                   | 50,2      | 3,2       | 1,5      | Solenry                     |
| 3            | 529084                   | 51,5      | 5,5       | 1,5      | Astoria, Gaggia, Cimbali    |
| 4            | 528415                   | 52        | 5         | 1,2      | Brasilia                    |
| 5            | 529089                   | 52        | 6         | 1,5      | Brasilia, Cimbali           |
| 6            | 529193                   | 52        | 6,2       | 2        | Elektra                     |
| 7            | 528856                   | 52        | 6,2       | 2        | Reneka                      |

Mit Aufkantung und Mittelloch/With edge and center hole



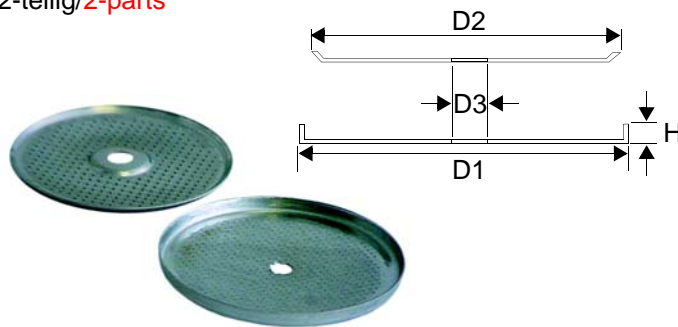
| Pos.<br>Item | Bestell-Nr.<br>Order-No. | D1/<br>mm | D2/<br>mm | H/<br>mm | Passend für<br>Suitable for |
|--------------|--------------------------|-----------|-----------|----------|-----------------------------|
| 1            | 529091                   | 57        | 6,2       | 4        | Carimali, Bezzera, Marzocco |
| 2            | 529085                   | 58        | 5         | 3,5      | Pavoni, Rancilio            |
| 3            | 528472                   | 58        | 6         | 9        | Conti                       |
| 4            | 529092                   | 57        | 5,5       | 5        | Auora                       |
| 5            | 529144                   | 56        | 5,5       | 6        | Nuova, Simonelli, Pavoni    |

Mit Aufkantung/With edge



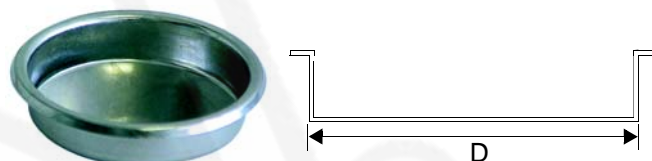
| Pos.<br>Item | Bestell-Nr.<br>Order-No. | D1/<br>mm | D2/<br>mm | H/<br>mm | Passend für<br>Suitable for   |
|--------------|--------------------------|-----------|-----------|----------|---|
| 1            | 529080                   | 60        | 57        | 12       | Azkoyen, Brasilia, Expobar, Pavoni, Espresso, Faema, Futurmat, Italcrem, Mairali, Vibiemme, Visacrem, VFA-Express, Wega |

2-teilig/2-parts



| Pos.<br>Item | Bestell-Nr.<br>Order-No. | D1/<br>mm | D2/<br>mm | D3/<br>mm | H/<br>mm | Passend für<br>Suitable for |
|--------------|--------------------------|-----------|-----------|-----------|----------|-----------------------------|
| 1            | 529090                   | 52        | 49,5      | 5         | 3,5      | Spaziale                    |

Blindsiebe/Blind sieves



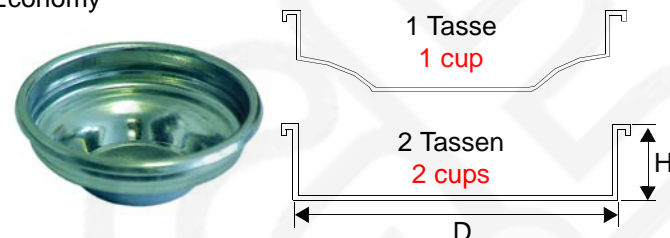
| Pos.<br>Item | Bestell-Nr.<br>Order-No. | D/<br>mm | Passend für<br>Suitable for |
|--------------|--------------------------|----------|-----------------------------|
| 1            | 529023                   | 60       | Universal                   |
| 2            | 529028                   | 57       | San Marco                   |
| 3            | 529064                   | 55       | Spaziale                    |

Membranen, Federn/Membrans, Springs



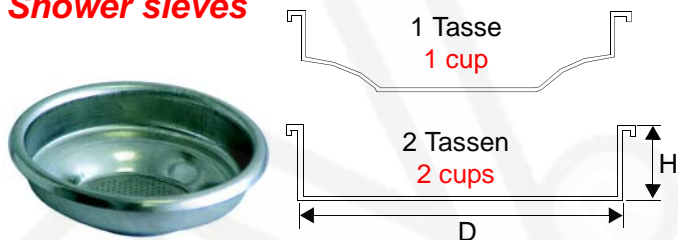
| Abb.<br>Pict. | Bestell-Nr.<br>Order-No. | Beschreibung<br>Description | Passend für<br>Suitable for |
|---------------|--------------------------|-----------------------------|-----------------------------|
| 1             | 529024                   | Membrane/Membrane           | Universal                   |
| 2             | 529079                   | Feder/Spring                | Universal                   |
| 2             | 529065                   | Feder/Spring                | San Marco, Spaziale         |

Kaffesiebe/Coffee sieves  
Economy



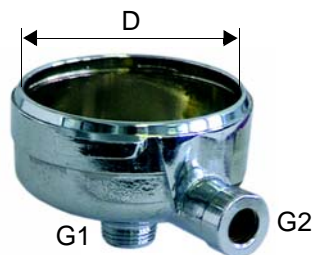
| Pos.<br>Item | Bestell-Nr.<br>Order-No. | Tassen<br>Cups | D/<br>mm | H/<br>mm | Passend für<br>Suitable for   |
|--------------|--------------------------|----------------|----------|----------|---|
| 1            | 529075                   | 1/7gr.         | 60       | 22       | Astoria, Auora, Bezzera, Brasilia, Faema, Futurmat, Marzocco, Pavoni, Nuova Simonelli, Vibiemme, Wega |
| 2            | 529076                   | 2/14gr.        | 60       | 24       | Carimali, Gaggia, Italcrem, Visacrem  |
| 3            | 529077                   | 1/7gr.         | 60       | 22       | Carimali, Gaggia, Italcrem, Visacrem  |
| 4            | 529078                   | 2/14gr.        | 60       | 24       | Carimali, Gaggia, Italcrem, Visacrem  |

## Kaffesiebe Shower sieves



| Pos.<br>Item | Bestell-Nr.<br>Order-No. | Tassen<br>Cups | D/<br>mm | H/<br>mm | Passend für<br>Suitable for   |
|--------------|--------------------------|----------------|----------|----------|---|
| 1            | 529012                   | 1/6gr.         | 60       | 20       | Astoria, Auora, Bezzera, Brasilia, Azkoyen, Conti, Elektra, Espresso, Expobar, Faema, Futurmat, Mairali, Marzocco, Nuova Simonelli, Pavoni, Reneka, Vibiemme, VFA-Express, Wega |
| 2            | 529011                   | 1/7gr.         | 60       | 22       |   |
| 3            | 529014                   | 2/12gr.        | 60       | 22       |   |
| 4            | 529013                   | 2/14gr.        | 60       | 24       |   |
| 5            | 529021                   | 1/7gr.         | 60       | 24       | Carimali, Gaggia, Italcrem, Visacrem  |
| 6            | 529022                   | 2/14gr.        | 60       | 24       |   |
| 7            | 529018                   | 1/6gr.         | 60       | 18       | Cimbali   |
| 8            | 529017                   | 1/7gr.         | 60       | 20       | Cimbali   |
| 9            | 529020                   | 2/12gr.        | 60       | 18       | Cimbali   |
| 10           | 529019                   | 2/14gr.        | 60       | 20       | Cimbali   |
| 11           | 529098                   | 1/7gr.         | 60       |          | Marcfi/Ancas  |
| 12           | 529099                   | 2/14gr.        | 60       |          | Marcfi/Ancas  |
| 13           | 529100                   | 1/7gr.         | 57       |          | Marcfi/Ancas  |
| 14           | 529101                   | 2/14gr.        | 57       |          | Marcfi/Ancas  |
| 15           | 529015                   | 1/7gr.         | 60       | 20       | Rancilio  |
| 16           | 529016                   | 2/14gr.        | 60       | 22       | Rancilio  |
| 17           | 529026                   | 1/7gr.         | 58       | 24       | San Marco   |
| 18           | 529027                   | 2/14gr.        | 58       | 27       | San Marco   |
| 19           | 529103                   | 1/7gr.         | 57       | 17       | Solenry   |
| 20           | 529104                   | 2/14gr.        | 57       | 22       | Solenry   |
| 21           | 529029                   | 1/7gr.         | 56       | 27       | Spaziale  |
| 22           | 529030                   | 2/14gr.        | 56       | 27       | Spaziale  |
| 23           | 529210                   | 1/7gr.         | 60       | 21       | Unic  |
| 24           | 529211                   | 2/14gr.        | 60       | 23       | Unic  |

## Siebträger Filter holders



| Pos.<br>Item | Bestell-Nr.<br>Order-No. | G1               | G2  | D/<br>mm | Passend für<br>Suitable for   |
|--------------|--------------------------|------------------|-----|----------|---|
| 1            | 529059                   | 3/8"             | M12 | 62       | Astoria, Bezzera, Brasilia, Vibiemme                                |
| 2            | 529072                   | 3/8"             | M12 | 62       | Auora   |
| 3            | 529041                   | 3/8"             | M12 | 61,5     | Brasilia, Faema, Futurmat, Italcrem, Mairali, VFA-Express, Visacrem |
| 4            | 529069                   | 3/8"             | M10 | 60,2     | Carimali  |
| 5            | 529051                   | 2-Loch<br>2-hole | M10 | 60       | Cimbali   |
| 6            | 529052                   | 3/8"             | M10 | 60       | Cimbali, Faema  |
| 7            | 529212                   | 3/8"             | M12 | 60,2     | Conti   |
| 8            | 529198                   | 3/8"             | M12 | 61,5     | Elektra   |
| 9            | 529058                   | 3/8"             | M12 | 62       | Espresso, Expobar, Wega   |
| 10           | 529055                   | 3/8"             | M10 | 61,2     | Gaggia, Italcrem, Visacrem  |
| 11           | 529204                   | 3/8"             | M12 | 62       | Marzocco  |
| 12           | 529205                   | 3/8"             | M10 | 62       | Marzocco  |
| 13           | 529071                   | 3/8"             | M10 | 61       | Nuova Simonelli   |
| 14           | 529034                   | 3/8"             | M10 | 60,2     | Pavoni  |
| 15           | 529050                   | 3/8"             | M12 | 62       | Rancilio  |
| 16           | 529033                   | 3/8"             | M10 | 60,2     | Reneka  |
| 17           | 529057                   | 3/8"             | M10 | 58       | San Marco   |
| 18           | 529156                   | 1/4"             | M10 | 57,7     | Solenry   |
| 19           | 529060                   | 3/8"             | M12 | 60,2     | Spaziale  |
| 20           | 529212                   | 3/8"             | M12 | 60,2     | Unic  |

## Griffe/Handles



| Pos.<br>Item | Bestell-Nr.<br>Order-No. | G   | Passend für<br>Suitable for |
|--------------|--------------------------|-----|-----------------------------|
| 1            | 529045                   | M12 | Universal                   |
| 2            | 529053                   | M10 | Universal                   |



## Gruppenzubehör

### Group accessories

Ausläufe/Outflow pipes



| Abb. Pict. | Bestell-Nr. Order-No. | Beschreibung Description                           | G G  |
|------------|-----------------------|--|------|
| 1          | 529002                | 1 Weg, gerade/kurz<br>1 way, straight/short        | 3/8" |
| 2          | 529001                | 1 Weg, gerade/lang<br>1 way, straight/long         | 3/8" |
| 3          | 529005                | 1 Weg, gebogen/kurz<br>1 way, straight/short       | 3/8" |
| 4          | 529003                | 1 Weg, gebogen/lang<br>1 way, curved/long          | 3/8" |
| 5          | 529004                | 1 Weg, gebogen/geschlossen<br>1 way, curved/closed | 3/8" |

## Gruppenzubehör

### Group accessories

Ausläufe/Outflow pipes



| Abb. Pict. | Bestell-Nr. Order-No. | Beschreibung Description         | G G                 |
|------------|-----------------------|----------------------------------|---------------------|
| 1          | 529162                | 1 Weg<br>1 way                   | 1/4"                |
| 2          | 529163                | 2 Wege Abstand<br>1 way distance | 1/4"                |
| 3          | 529009                | 1 Weg<br>1 way                   | 2 Lochbefestigungen |
| 4          | 529010                | 2 Wege<br>2 ways                 | 2 Lochbefestigungen |



| Abb. Pict. | Bestell-Nr. Order-No. | Beschreibung Description                                 | G G  |
|------------|-----------------------|--|------|
| 1          | 529008                | 2 Wege Abstand, 44mm<br>2 ways distance, 44mm            | 3/8" |
| 2          | 529007                | 2 Wege Abstand, 55mm kurz<br>2 ways distance, 55mm short | 3/8" |
| 3          | 529006                | 2 Wege Abstand, 55mm lang<br>2 ways distance, 55mm long  | 3/8" |



| Abb. Pict. | Bestell-Nr. Order-No. | Beschreibung Description  | G G  |
|------------|-----------------------|---|------|
| 1          | 529161                | 2 Wege Abstand, 55mm kurz regulierbar<br>2 ways distance, 55mm short adjustable | 3/8" |
| 2          | 529165                | 2 Wege Abstand, 55mm lang regulierbar<br>2 ways distance, 55mm long adjustable  |      |

## Dampfdüsen/Steam nozzles



| Abb. Pict. | Bestell-Nr. Order-No. | Material Material                  | G G     | L/mm |
|------------|-----------------------|------------------------------------|---------|------|
| 1          | 529787                | Messing/verchromt<br>Brass/chromed | M6 x 1  | 18   |
| 2          | 529788                | Messing<br>Brass                   | M6 x 1  | 18   |
| 3          | 529513                | Messing/verchromt<br>Brass/chromed | M10 x 1 | 16   |
| 4          | 529573                | Messing/verchromt<br>Brass/chromed | M10 x 1 | 17   |



| Abb. Pict. | Bestell-Nr. Order-No. | Material Material                  | G G         | L/mm |
|------------|-----------------------|------------------------------------|-------------|------|
| 1          | 528828                | Messing/verchromt<br>Brass/chromed | M9          | 25   |
| 2          | 529801                | CNS<br>Stainless steel             | 1/8"        | 28   |
| 3          | 529861                | CNS<br>Stainless steel             | M8,5 x 0,75 | 33   |

## Manometer

### Manometers

Monoskala/Mono scale



| Abb. Pict. | Best.-Nr. Ord.-No. | G    | Druck Pressure | Einbau-Ø Fitting-Ø | Passend für Suitable for |
|------------|--------------------|------|----------------|--------------------|--------------------------|
| 1          | 541205             | 1/8" | 3bar           | 42                 | Faema                    |
| 2          | 541206             | 1/8" | 16bar          | 42                 | Faema                    |
| 3          | 541261             | 1/8" | 2,5bar         | 44                 | Faema                    |



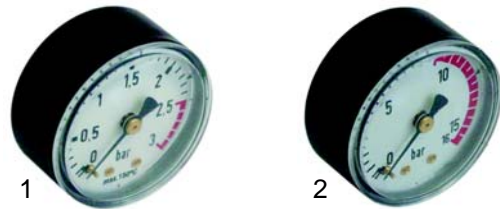
| Abb. Pict. | Best.-Nr. Ord.-No. | G    | Druck Pressure | Einbau-Ø Fitting-Ø | Passend für Suitable for |
|------------|--------------------|------|----------------|--------------------|--------------------------|
| 1          | 541229             | 1/8" | 3bar           | 42mm               | Gaggia, Carimali         |
| 2          | 541228             | 1/8" | 15bar          | 42mm               | Gaggia, Carimali         |
| 3          | 541258             | 1/8" | 3bar           | 42mm               | Azkoyen                  |
| 4          | 541265             | 1/8" | 2,5bar         | 42mm               | Bezzera                  |



| Abb. Pict. | Best.-Nr. Ord.-No. | G    | Druck Pressure | Einbau-Ø Fitting-Ø | Passend für Suitable for |
|------------|--------------------|------|----------------|--------------------|--------------------------|
| 1          | 541242             | 1/4" | 3bar           | 50mm               | Italcrem                 |
| 2          | 541243             | 1/4" | 24bar          | 50mm               | Italcrem                 |
| 3          | 541217             | 1/8" | 3bar           | 50mm               | Gaggia                   |
| 4          | 541216             | 1/8" | 15bar          | 50mm               | Gaggia                   |



| Abb. Pict. | Best.-Nr. Ord.-No. | G    | Druck Pressure | Einbau-Ø Fitting-Ø | Passend für Suitable for      |
|------------|--------------------|------|----------------|--------------------|-------------------------------|
| 1          | 541244             | 1/8" | 3bar           | 50mm               | Italcrem, Visacrem, San Marco |
| 2          | 541246             | 1/8" | 12bar          | 50mm               | Italcrem, Visacrem            |
| 3          | 541245             | 1/8" | 24bar          | 50mm               | Italcrem, Visacrem            |



| Abb. Pict. | Best.-Nr. Ord.-No. | G    | Druck Pressure | Einbau-Ø Fitting-Ø | Passend für Suitable for |
|------------|--------------------|------|----------------|--------------------|--------------------------|
| 1          | 541289             | 1/8" | 3bar           | 50mm               | Reneka                   |
| 2          | 541290             | 1/8" | 16bar          | 50mm               | Reneka                   |



| Abb. Pict. | Best.-Nr. Ord.-No. | G    | Druck Pressure | Einbau-Ø Fitting-Ø | Passend für Suitable for |
|------------|--------------------|------|----------------|--------------------|--------------------------|
| 1          | 541281             | 1/8" | 20bar          | 52mm               | Solenry, Futurmat        |
| 2          | 541225             | 1/4" | 3bar           | 52mm               | Astoria                  |
| 3          | 541274             | 1/4" | 3bar           | 52mm               | Auora                    |



| Abb. Pict. | Best.-Nr. Ord.-No. | G    | Druck Pressure | Einbau-Ø Fitting-Ø | Passend für Suitable for |
|------------|--------------------|------|----------------|--------------------|--------------------------|
| 1          | 541214             | 1/8" | 3bar           | 54mm               | Gaggia                   |
| 2          | 541215             | 1/8" | 16bar          | 54mm               | Gaggia                   |
| 3          | 541276             | 1/8" | 2,5bar         | 60mm               | Cimbali                  |



| Abb. Pict. | Best.-Nr. Ord.-No. | G    | Druck Pressure | Einbau-Ø Fitting-Ø | Passend für Suitable for |
|------------|--------------------|------|----------------|--------------------|--------------------------|
| 1          | 541212             | 1/8" | 2,5bar         | 60mm               | Cimbali                  |
| 2          | 541213             | 1/8" | 15bar          | 60mm               | Cimbali                  |
| 3          | 541275             | 1/8" | 2,5bar         | 60mm               | Cimbali                  |



## Manometer

### Manometers

Monoskala/Mono scale



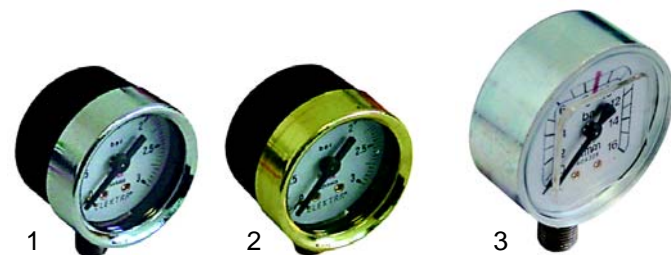
| Abb. Pict. | Best.-Nr. Ord.-No. | G    | Druck Pressure | Einbau-Ø Fitting-Ø | Passend für Suitable for |
|------------|--------------------|------|----------------|--------------------|--------------------------|
| 1          | 541231             | 1/4" | 3bar           | 60mm               | Bezzera                  |
| 2          | 541286             | 1/8" | 3bar           | 60mm               | Pavoni                   |
| 3          | 541280             | 1/8" | 3bar           | 60mm               | Expobar                  |



| Pos. Item | Best.-Nr. Ord.-No. | G    | Druck Pressure | Einbau-Ø Fitting-Ø | Passend für Suitable for |
|-----------|--------------------|------|----------------|--------------------|--------------------------|
| 1         | 541250             | 1/4" | 3bar           | 65mm               | Marcfi/Ancas             |



| Abb. Pict. | Best.-Nr. Ord.-No. | G    | Druck Pressure | Einbau-Ø Fitting-Ø | Rahmen Frame | Passend f. Suitable f. |
|------------|--------------------|------|----------------|--------------------|--------------|------------------------|
| 1          | 541268             | 1/8" | 2,5bar         | 58mm               | 60x47mm      | Brasilia               |
| 2          | 541207             | 1/8" | 15bar          | 61mm               | 60x47mm      | Faema                  |
| 3          | 541277             | 1/4" | 3bar           | 62mm               | 38x38mm      | Conti                  |



| Pos. Item | Best.-Nr. Ord.-No. | G    | Druck Pressure | Einbau-Ø Fitting-Ø | Passend für Suitable for |
|-----------|--------------------|------|----------------|--------------------|--------------------------|
| 1         | 541253             | 1/8" | 3bar           | 44mm               | Elektra                  |
| 2         | 541254             | 1/8" | 3bar           | 44mm               | Elektra                  |
| 3         | 541278             | 1/4" | 16bar          | 62mm               | Conti                    |

Rechteckig/rectangular

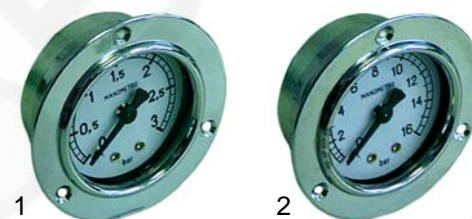


| Abb. Pict. | B.-Nr. O.-No. | G    | Druck Press. | Einb.-Ø Fitt.-Ø | Rahmen Frame | Passend f. Suitable f. |
|------------|---------------|------|--------------|-----------------|--------------|------------------------|
| 1          | 541283        | 1/4" | 3bar         | 52mm            | 79x56mm      | Gaggia, Solenry        |
| 2          | 541284        | 1/4" | 15bar        | 52mm            | 79x56mm      | Gaggia                 |
| 3          | 541282        | 1/4" | 2bar         | 52mm            | 79x56mm      | Futurmat               |



| Abb. Pict. | B.-Nr. O.-No. | G    | Druck Press. | Einb.-Ø Fitt.-Ø | Rahmen Frame | Passend f. Suitable f. |
|------------|---------------|------|--------------|-----------------|--------------|------------------------|
| 1          | 541247        | 1/4" | 2bar         | 52mm            | 79x56mm      | Mairali                |
| 2          | 541230        | 1/8" | 2bar         | 55mm            | 61x61mm      | Carimali               |

Mit Frontbefestigung/With front attachment



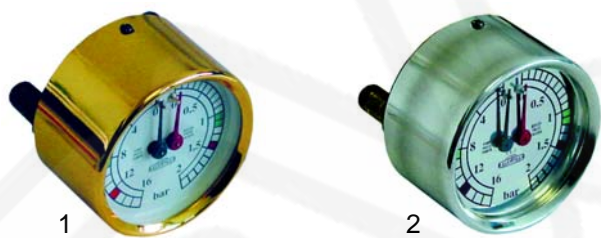
| Abb. Pict. | Best.-Nr. Ord.-No. | G    | Druck Pressure | Einbau-Ø Fitting-Ø | Passend für Suitable for |
|------------|--------------------|------|----------------|--------------------|--------------------------|
| 1          | 541200             | 1/8" | 3bar           | 55mm               | Faema, Futurmat          |
| 2          | 541201             | 1/8" | 16bar          | 55mm               | Faema, Futurmat          |



## Manometer

### Manometers

Doppelskala/Double scale



| Abb. Pict. | Bestell-Nr. Order-No. | G    | Druck Press. | Einb.-Ø Fitt.-Ø | Passend für Suitable für |
|------------|-----------------------|------|--------------|-----------------|--------------------------|
| 1          | 541255                | 1/8" | 2/16bar      | 60mm            | Elektra                  |
| 2          | 541264                | 1/8" | 2/16bar      | 60mm            | Elektra                  |



| Abb. Pict. | Bestell-Nr. Order-No. | G    | Druck Press. | Einb.-Ø Fitt.-Ø | Passend für Suitable für                |
|------------|-----------------------|------|--------------|-----------------|---|
| 1          | 541222                | 1/8" | 2,5/20bar    | 60mm            | Vibiemme                                |
| 2          | 541270                | 1/8" | 2,5/6bar     | 60mm            | Brasilia                                |
| 3          | 541208                | 1/8" | 3/16bar      | 60mm            | Expobar, Futurmat, Mairali, VFA-Express |



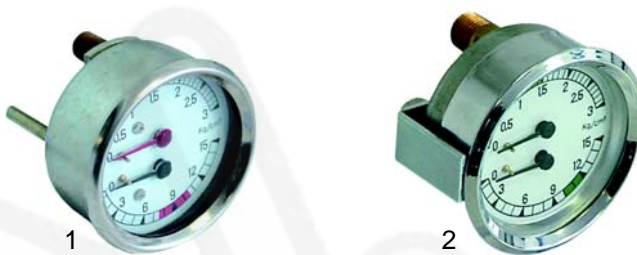
| Abb. Pict. | Bestell-Nr. Order-No. | G    | Druck Press. | Einb.-Ø Fitt.-Ø | Passend für Suitable für          |
|------------|-----------------------|------|--------------|-----------------|-----------------------------------|
| 1          | 541223                | 1/8" | 2,5/16bar    | 60mm            | Astoria, Espresso, Spaziale, Wega |
| 2          | 541262                | 1/8" | 3/15bar      | 63mm            | Astoria                           |
| 3          | 541202                | 1/8" | 3/15bar      | 60mm            | Faema                             |



| Abb. Pict. | Bestell-Nr. Order-No. | G    | Druck Press. | Einb.-Ø Fitt.-Ø | Passend für Suitable für |
|------------|-----------------------|------|--------------|-----------------|--------------------------|
| 1          | 541285                | 1/8" | 3/15bar      | 60              | Marzocco                 |
| 2          | 541233                | 1/8" | 2,5/15bar    | 60              | Nuova Simonelli          |
| 3          | 541287                | 1/8" | 2,5/15bar    | 60              | Pavoni                   |



| Abb. Pict. | Bestell-Nr. Order-No. | G    | Druck Press. | Einb.-Ø Fitt.-Ø | Passend für Suitable für |
|------------|-----------------------|------|--------------|-----------------|--------------------------|
| 1          | 541210                | 1/8" | 2,5/15bar    | 60mm            | Cimbali M15              |
| 2          | 541211                | 1/8" | 2,5/15bar    | 60mm            | Cimbali M20              |
| 3          | 541220                | 1/8" | 3/15bar      | 63mm            | San Marco                |



| Abb. Pict. | Bestell-Nr. Order-No. | G    | Druck Press. | Einb.-Ø Fitt.-Ø | Passend für Suitable für |
|------------|-----------------------|------|--------------|-----------------|--------------------------|
| 1          | 541293                | 1/4" | 3/15bar      | 66mm            | Solenry                  |
| 2          | 541249                | 1/4" | 3/15bar      | 65mm            | Marcfi/Ancas             |



| Abb. Pict. | B.-Nr. O.-No. | G    | Druck Press. | Rahmen Frame | Einb.-Ø Fitt.-Ø | Passend f. Suitable f. |
|------------|---------------|------|--------------|--------------|-----------------|------------------------|
| 1          | 541263        | 1/8" | 2,5/16bar    | 48x37mm      | 63mm            | Astoria                |
| 2          | 541266        | 1/8" | 2,5/16bar    | 48x37mm      | 63mm            | Bezzera                |
| 3          | 541234        | 1/8" | 2,5/15bar    | 60x47mm      | 63mm            | Auora                  |



| Abb. Pict. | B.-Nr. O.-No. | G    | Druck Press. | Rahmen Frame | Einb.-Ø Fitt.-Ø | Passend f. Suitable f. |
|------------|---------------|------|--------------|--------------|-----------------|------------------------|
| 1          | 541256        | 1/8" | 2,5/15bar    | 60x47mm      | 58mm            | Brasilia               |
| 2          | 541269        | 1/8" | 2,5/15bar    | 60x47mm      | 58mm            | Brasilia               |
| 3          | 541273        | 1/8" | 2,5/15bar    | 60x47mm      | 58mm            | Brasilia               |

## Manometer

### Manometers

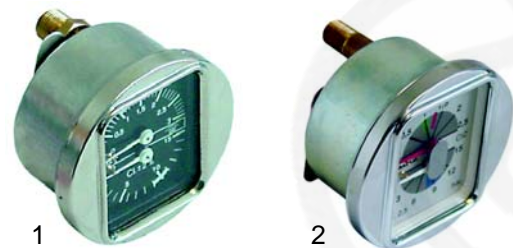
Doppelskala/Double scale



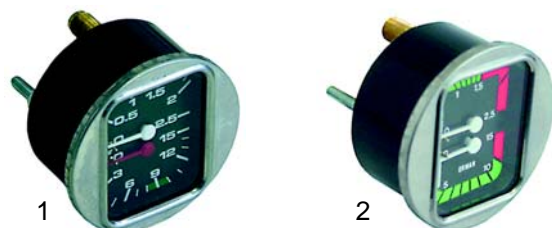
| Abb. Pict. | B.-Nr. O.-No. | G    | Druck Press. | Rahmen Frame | Einb.-Ø Fitt.-Ø | Passend f. Suitable f. |
|------------|---------------|------|--------------|--------------|-----------------|------------------------|
| 1          | 541267        | 1/8" | 2,5/15bar    | 60x47mm      | 60mm            | Brasilia               |
| 2          | 541279        | 1/8" | 2,5/20bar    | 60x47mm      | 63mm            | Conti                  |
| 3          | 541224        | 1/8" | 2,5/16bar    | 60x47mm      | 63mm            | Spaziale               |



| Abb. Pict. | B.-Nr. O.-No. | G    | Druck Press. | Rahmen Frame | Einb.-Ø Fitt.-Ø | Passend f. Suitable f. |
|------------|---------------|------|--------------|--------------|-----------------|------------------------|
| 1          | 541294        | 1/8" | 3,5/6bar     | 60x47mm      | 60mm            | Unic                   |
| 2          | 541295        | 1/8" | 3,5/20bar    | 60x47mm      | 60mm            | Unic                   |
| 3          | 541209        | 1/8" | 2,5/16bar    | 67x47mm      | 60mm            | Rancilio               |



| Abb. Pict. | B.-Nr. O.-No. | G    | Druck Press. | Rahmen Frame | Einb.-Ø Fitt.-Ø | Passend f. Suitable f. |
|------------|---------------|------|--------------|--------------|-----------------|------------------------|
| 1          | 541259        | 1/8" | 3/15bar      | 60x47mm      | 60mm            | Bezzera                |
| 2          | 541257        | 1/8" | 2,5/15bar    | 60x47mm      | 58mm            | Brasilia               |



| Abb. Pict. | B.-Nr. O.-No. | G    | Druck Press. | Rahmen Frame | Einb.-Ø Fitt.-Ø | Passend f. Suitable f. |
|------------|---------------|------|--------------|--------------|-----------------|------------------------|
| 1          | 541203        | 1/8" | 2,5/15bar    | 60x47mm      | 63mm            | Faema                  |
| 2          | 541288        | 1/8" | 2,5/15bar    | 60x47mm      | 63mm            | Pavoni                 |

## Schrauben/CNS (V2A)

### Screws/stainless steel (V2A)

VPE 20 Stück/Pack 20 pieces



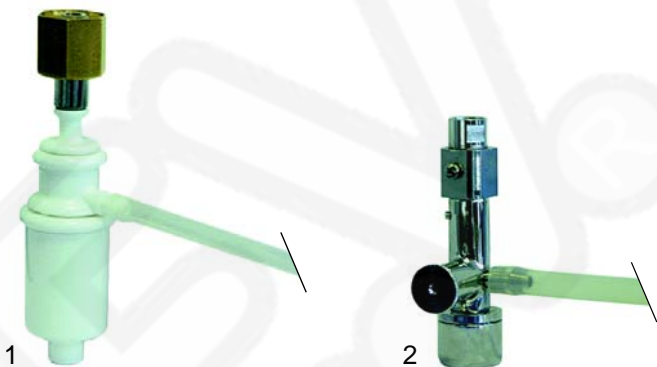
| Abb. Pict. | Bestell-Nr. Order-No. | Größe Size | VPE/Stück Pack/pieces | DIN-Norm |
|------------|-----------------------|------------|-----------------------|----------|
| 1          | 560216                | 5 x 20mm   | 20                    | 963      |
| 1          | 560219                | 6 x 14mm   | 20                    | 963      |
| 1          | 560273                | 6 x 16mm   | 20                    | 963      |
| 2          | 560270                | 5 x 23mm   | 30                    | 966      |
| 2          | 560271                | 5 x 14mm   | 20                    | 966      |
| 2          | 560272                | 5 x 16mm   | 20                    | 966      |
| 3          | 560084                | 5 x 16mm   | 20                    | 933      |
| 3          | 560274                | 5 x 25mm   | 20                    | 933      |



| Abb. Pict. | Bestell-Nr. Order-No. | Größe Size | VPE/Stück Pack/pieces | DIN-Norm |
|------------|-----------------------|------------|-----------------------|----------|
| 1          | 560275                | 5 x 8mm    | 20                    | 933      |
| 1          | 560276                | 5 x 12mm   | 20                    | 933      |
| 2          | 560025                | 4 x 10mm   | 20                    | 912      |
| 2          | 560031                | 6 x 10mm   | 20                    | 912      |
| 2          | 560032                | 6 x 14mm   | 20                    | 912      |



## Hilfsmittel Useful accessories



| Abb. Pict. | Bestell-Nr. Order-No. | Beschreibung Description  |
|------------|-----------------------|---|
| 1          | 802109                | Milchaufschäumer, 1/2"<br>Milk foamer, 1/2"                         |
| 2          | 802110                | Milchaufschäumer, 1/8" (CNS)<br>Milk foamer, 1/8" (stainless steel) |



| Abb. Pict. | Bestell-Nr. Order-No. | Beschreibung Description                                       |
|------------|-----------------------|--|
| 1          | 802104                | Kaffepulverpresse (Nylon)<br>Coffepowder press (nylon)         |
| 2          | 802113                | Kaffepulverpresse (Aluminium)<br>Coffepowder press (aluminium) |
| 3          | 802103                | Kaffeelöffel (Kunststoff)<br>Coffeespoon (plastic)             |



| Abb. Pict. | Bestell-Nr. Order-No. | Beschreibung Description                                    |
|------------|-----------------------|---|
| 1          | 802101                | Probedruck-Manometer, 3/8"<br>Test pressure manometer, 3/8" |
| 2          | 802102                | Reinigungsbürste<br>Cleaning brush                          |

## Hilfsmittel Useful accessories



| Abb. Pict. | Bestell-Nr. Order-No. | Beschreibung Description                         |
|------------|-----------------------|--|
| 1          | 802115                | Digitalwaage, 100g<br>Digital balance, 100g      |
| 2          | 802116                | Thermometer/50 - 260°C<br>Thermometer/50 - 260°C |



| Abb. Pict. | Bestell-Nr. Order-No. | Beschreibung Description   |
|------------|-----------------------|--|
| 1          | 541097                | Analogthermometer/-10 - 100°C<br>Analogous thermometer/-10 - 100°C |
| 2          | 541096                | Digitalthermometer/-50 - 150°C<br>Digital thermometer/-50 - 150°C  |



| Pos. Item | Bestell-Nr. Order-No. | Beschreibung Description   |
|-----------|-----------------------|--|
| 1         | 802120                | Kaffeemesskoffer/kpl. (Digitalwaage, Thermometer, Kaffepulverpresse, Prüfmanometer mit Siebträger, Reinigungsbürste, Wasserhärte-Messtest)<br>Coffeemeasuring bag/cpl. (Digital balnce, thermometer, coffepowder press, testing manometer with filter holder, cleaning brush, water hardness-measuring test) |



## Hilfsmittel Useful accessories



| Abb. Pict. | Bestell-Nr. Order-No. | Beschreibung Description   |
|------------|-----------------------|--|
| 1          | 802111                | Milchaufschäumerreiniger, 1Liter<br>Cleaner for milk foamer, 1 liter |
| 2          | 530097                | Entkalkungsmittel, 50g Beutel<br>Calcium remover, 50g pouch          |
| 2          | 530098                | Entkalkungsmittel, 200g Beutel<br>Calcium remover, 200g pouch        |
| 2          | 530099                | Entkalkungsmittel, 1000g Beutel<br>Calcium remover, 1000g pouch      |
| 3          | 802117                | Puly clean baby, 10 Beutel<br>Puly clean baby, 10 pouch              |
| 4          | 802118                | Entkalkungsmittel, 1 kg Dose<br>Calcium remover, 1 kg box            |



| Abb. Pict. | Bestell-Nr. Order-No. | Beschreibung Description  |
|------------|-----------------------|---|
| 1          | 950010                | Kaffeesatzreiniger, 900g Dose<br>Coffee ground cleaner, 900g box      |
| 2          | 802106                | Kaffeesatzreiniger, 15 Beutel<br>Coffee ground cleaner, 15 pouch      |
| 3          | 802107                | Kaffeesatzreiniger, 60 Tabletten<br>Coffee ground cleaner, 60 tablets |

## Etolit produkte/Etolit products



| Abb. Pict. | Bestell-Nr. Order-No. | Beschreibung Description  |
|------------|-----------------------|---|
| 1          | 802124                | Entkalkungsmittel, 1000g Dose<br>Calcium remover, 1000g box                           |
| 2          | 802123                | Tee- und Kaffee-reiniger, 1000g Dose<br>Tea- and coffeecleaner, 1000g box             |
| 3          | 802122                | Milchaufschäumer und Sahnespender, 1Liter<br>Milk foamer and cream dispenser, 1 liter |

## Loctite produkte/Loctite products



ohne Abbildung!  
without Picture!

| Abb. Pict. | Bestell-Nr. Order-No. | Beschreibung Description                                  |
|------------|-----------------------|---|
| 1          | 890058                | Flüssige Rohrgewindedichtung<br>Liquid gasket             |
| 2          | 890063                | Hochfeste Schraubensicherung<br>Very firm bolt protection |
| 3          | 890136                | Sekundenkleber, 3g Tube<br>Moment adhesive, 3g tube       |
| 4          | 890078                | Sekundenkleber, 5g Flasche<br>Moment adhesive, 5g bottle  |

## Schmiermittel (KTW-Zulassung) Lubricants (FDA-registration)



| Abb. Pict. | Bestell-Nr. Order-No. | Beschreibung Description                           |
|------------|-----------------------|--|
| 1          | 890087                | Silikonfett, 25g Tube<br>Silicon fat, 25g tube     |
| 1          | 890101                | Silikonfett, 75g Tube<br>Silicon fat, 75g tube     |
| 2          | 890119                | Armaturen Fett, 25g Tube<br>Fitting fats, 25g tube |
| 3          | 890118                | Armaturen Fett, 14g Tube<br>Fitting fats, 14g tube |
| 4          | 890116                | Armaturen Fett, 60g Tube<br>Fitting fats, 60g tube |

## Innenbürsten Inner brushes



| in mm |     |     | Abb. CNS/Best.-Nr. Stainl. steel/ Order-No | Abb. Nylon/Best.-Nr. Nylon/Order-No. |
|-------|-----|-----|--|--------------------------------------|
| D     | L   | A   |  |                                      |
| 4     | 300 | 100 | 1 801451                                   | 2 801461                             |
| 6     | 300 | 100 | 1 801452                                   | 2 801462                             |
| 8     | 300 | 100 | 1 801453                                   | 2 801463                             |
| 10    | 300 | 100 | 1 801454                                   | 2 801464                             |
| 12    | 300 | 100 | 1 801455                                   | 2 801465                             |
| 15    | 300 | 100 | 1 801456                                   | 2 801466                             |
| 20    | 300 | 100 | 1 801457                                   | 2 801467                             |

## Hilfsmittel

### Useful accessories

#### Filterkörbe/Filter baskets



| Pos.<br>Item | B.-Nr.<br>O.-No. | VPE<br>Pack             | Maße<br>Dim. | Gerätetyp<br>Device type               | Vergl.-Nr.<br>Comp.-No.  |
|--------------|------------------|-------------------------|--------------|--|--------------------------|
| 1            | 960100           | 1000 Stck.<br>1000 pcs. | 84/250mm     | Mondo, Matic,<br>Nova, Th,<br>RL-Serie | 7150101103<br>7150101108 |
| 2            | 960105           | 500 Stck.<br>500 pcs.   | 110/360mm    | B5, B5HW,<br>AM112                     | 7150102301               |
| 3            | 960102           | 500 Stck.<br>500 pcs.   | 152/437mm    | B10, B10HW                             | 7150103301               |
| 4            | 960103           | 500 Stck.<br>500 pcs.   | 175/525mm    | B26, B20HW                             | 7150104301               |
| 5            | 960104           | 500 Stck.<br>500 pcs.   | 280/635mm    | B40, B40HW                             | 7150105301               |

#### Filterpfannen/Filter pans



| Abb.<br>Pict. | B.-Nr.<br>O.-No. | Beschreibung<br>Description  | Passend für<br>Suitable for |
|---------------|------------------|--|-----------------------------|
| 1             | 950100           | Universal-Filterpfanne mit Dauerfilter<br>Universal filter pan with permanent filter | Animo, Bonamat,<br>Melitta  |
| 2             | 960095           | Messkanne, 2 Liter<br>Measuring can, 2 liters  | Animo, Bonamat,<br>Melitta  |

#### Steckfüße/Plugging feet



| Abb.<br>Pict. | Bestell-Nr.<br>Order-No. | D1/<br>mm | D2/<br>mm | H/<br>mm | Passend für<br>Suitable for     |
|---------------|--------------------------|-----------|-----------|----------|---------------------------------|
| 1             | 802130                   | 40        | 10        | 16       | Kaffeemaschinen<br>Coffee-maker |
| 2             | 802134                   | 20        | 12        | 9        | Kaffemühle<br>Coffee grinder    |
| 3             | 802133                   | 24        | 8         | 4        | Motorpumpe<br>Engine pump       |

#### Steckfüße/Plugging feet



| Abb.<br>Pict. | Bestell-Nr.<br>Order-No. | Maße<br>Measures | G<br>G | H/<br>mm |
|---------------|--------------------------|------------------|--------|----------|
| 1             | 802131                   | 40x40mm          | M10    | 30       |
| 2             | 802132                   | Ø 42/32mm        | M10    | 52 - 70  |



| Pos.<br>Item | Bestell-Nr.<br>Order-No. | G   | D/<br>mm | H1/<br>mm | H2/<br>mm |
|--------------|--------------------------|-----|----------|-----------|-----------|
| 1            | 690830                   | M8  | 24       | 8         | 34        |
| 2            | 690831                   | M8  | 24       | 8         | 54        |
| 3            | 690832                   | M10 | 24       | 8         | 34        |
| 4            | 690833                   | M10 | 24       | 8         | 54        |

#### Dampfrohwasserschutz/Steam pipe water cover



| Abb.<br>Pict. | Bestell-Nr.<br>Order-No. | Beschreibung<br>Description                   |
|---------------|--------------------------|---|
| 1             | 528625                   | Gummischlauchschutz<br>Rubber hose protection |
| 2             | 529626                   | Pinzette/kurz<br>Tweezers/short               |
| 3             | 529627                   | Pinzette/lang<br>Tweezers/long                |

## Manuelle Wasserenthärter Hand water softener

### Legende:

FI Flascheninhalt in Lit.  
HI Harzmengeninhalt in Lit.  
SV Salzverbrauch pro Regen.  
K Kapazität bei 17°DH

### Abbreviations:

FI Cylinder contents in lit.  
HI Resin amount in lit.  
SV Salt consumption f. regen.  
K Capacity at 17°DH

### Technische Daten:

Betriebsdruck: max. 7bar  
Wassertemperatur: 2 bis 40°C  
Anschluss: 3/8"

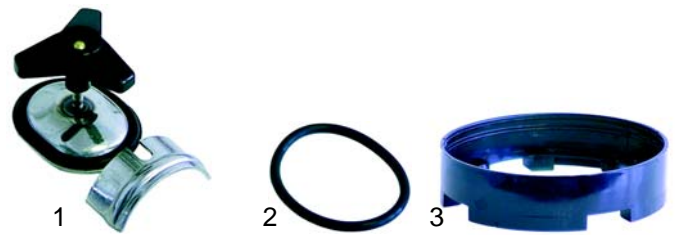
### Technical data:

Operating pressure: max. 7bar  
Water temperature: 2 - 40°C  
Connection : 3/8"



| Abb. Pict. | B.-Nr. O.-No. | FI    | HI     | SV     | K       | HxD (mm)  |
|------------|---------------|-------|--------|--------|---------|-----------|
| 1          | 530120        | 8 L.  | 5,8 L. | 1 kg   | 1000 L. | 185 x 415 |
| 1          | 530121        | 12 L. | 9 L.   | 1,5 kg | 1500 L. | 185 x 515 |
| 1          | 530126        | 16 L. | 12 L.  | 2 kg   | 2100 L. | 185 x 615 |
| 1          | 530127        | 20 L. | 15 L.  | 3 kg   | 3100 L. | 185 x 915 |
| 2          | 530122        | 8 L.  | 5,8 L. | 1 kg   | 1000 L. | 185 x 415 |
| 2          | 530123        | 12 L. | 9 L.   | 1,5 kg | 1500 L. | 185 x 515 |
| 2          | 530124        | 16 L. | 12 L.  | 2 kg   | 2100 L. | 185 x 615 |
| 2          | 530125        | 20 L. | 15 L.  | 3 kg   | 3100 L. | 185 x 915 |
| 3          | 530195        | 7 L.  | 5 L.   | 1 kg   | 1100 L. | 175 x 380 |
| 3          | 530196        | 10 L. | 7 L.   | 1,5 kg | 1500 L. | 175 x 420 |
| 3          | 530197        | 12 L. | 8 L.   | 2 kg   | 1700 L. | 175 x 510 |

### Ersatzteile MB/MM/Spare parts MB/MM



| Abb. Pict. | Bestell-Nr. Order-No. | Beschreibung Description            | Für Typ For type |
|------------|-----------------------|-------------------------------------|------------------|
| 1          | 520130                | Deckel/kpl.<br>Cover/cpl.           | MB, MM           |
| 2          | 520131                | O-Ring ( Deckel )<br>O-ring (cover) | MB, MM           |
| 3          | 530128                | Plastsockel<br>Plastic base         | MB, MM           |



| Abb. Pict. | Bestell-Nr. Order-No. | Beschreibung Description  | Für Typ For type |
|------------|-----------------------|---------------------------|------------------|
| 1          | 520132                | Filter/oben/Filter above  | MB               |
| 1          | 520269                | Filter/oben/Filter above  | MM               |
| 2          | 520134                | Filter/unten/Filter below | MB               |
| 2          | 520140                | Filter/unten/Filter below | MM 8L            |
| 2          | 520141                | Filter/unten/Filter below | MM 12L           |
| 2          | 520142                | Filter/unten/Filter below | MM16L            |
| 2          | 520143                | Filter/unten/Filter below | MM20L            |

### Ersatzteile MB/MM/Spare parts MB/MM



| Abb. Pict. | Bestell-Nr. Order-No. | Beschreibung Description                           | Für Typ For type |
|------------|-----------------------|--|------------------|
| 1          | 520133                | Ventil, 3/8"<br>Valve, 3/8"                        | MB               |
| 2          | 520135                | Bypassventil<br>Bypass valve                       | MM               |
| 3          | 530328                | Düse, M6 x 1<br>Nozzle, M6 x 1                     | MB               |
| 4          | 520213                | Reduzierung, 3/8" - 3/4"<br>Reduction, 3/8" - 3/4" | MB, MM           |
| 5          | 520214                | Reduzierung, 3/8" - 3/4"<br>Reduction, 3/8" - 3/4" | MB, MM           |



| Abb. Pict. | Bestell-Nr. Order-No. | Beschreibung Description   |
|------------|-----------------------|--|
| 1          | 520136                | Harz Dowex HCR -S/S, 25 Liter<br>Resin Dowex HCR -S/S, 25 liter                    |
| 1          | 530240                | Harz Purolite 25 Liter<br>Resin Purolite 25 liter                                  |
| 2          | 540620                | Gesamthärte-Maßbesteck<br>Devices for water hardness measur. (overall hardness)    |
| 2          | 540621                | Karbonathärte-Maßbesteck/<br>Devices f. water hardness measur.(carbonate hardness) |



## Automatischer Wasserenthärter Automatic water softener

### Legende:

FI Flascheninhalt in Lit.  
HI Harzmengeninhalt in Lit.  
SV Salzverbrauch pro Regen.  
KS Kapazität Salzbehälter  
K Kapazität bei 17°DH

### Abbreviations:

FI Cylinder contents in lit.  
HI Resin amount in lit.  
SV Salt consumption f. regen.  
KS Capacity salt cylinder  
K Capacity at 17°DH

### Typ AZB

#### Technische Daten:

Betriebsdruck: 2 bis 5 bar  
Temperatur: 2 bis 40°C  
Versorgung: 230V/50Hz  
Intervall: 1 bis 6 Tage  
Steuerung: Bores/Zeitsteuerung

#### Technical data:

Operating pressure: 2 bis 5 bar  
Temperature: 2 - 40°C  
Feeding : 230V/50Hz  
Interval: 1 to 6 days  
Regulation: Bores/Time regul.



| Abb. Pict. | B.-Nr. O.-No. | FI    | HI   | SV     | KS    | K       | BxTxH (mm)      |
|------------|---------------|-------|------|--------|-------|---------|-----------------|
| 1          | 530138        | 8 L.  | 6 L. | 1,1 kg | 20 kg | 1300 L. | 230 x 430 x 490 |
| 1          | 530139        | 12 L. | 9 L. | 1,5 kg | 50 kg | 1900 L. | 310 x 430 x 590 |

### Typ AZA

#### Technische Daten:

Betriebsdruck: 1,8 bis 7 bar  
Temperatur: 2 bis 45°C  
Versorgung: 230V/50Hz  
Intervall: 1 bis 6 Tage  
Steuerung: Autotrol/Zeitsteuerung

#### Technical data:

Operating pressure: 1,8 bis 7 bar  
Temperature: 2 - 45°C  
Feeding : 230V/50Hz  
Interval: 1 to 6 days  
Regulation: Autotrol/Time regulation



| Abb. Pict. | B.-Nr. O.-No. | FI    | HI    | SV     | KS    | K       | BxTxH (mm)       |
|------------|---------------|-------|-------|--------|-------|---------|------------------|
| 1          | 530130        | 8 L.  | 6 L.  | 1,1 kg | 20 kg | 1300 L. | 245 x 480 x 560  |
| 2          | 530131        | 12 L. | 9 L.  | 1,5 kg | 30 kg | 1950 L. | 310 x 430 x 660  |
| 2          | 530132        | 20L.  | 15 L. | 2,7 kg | 70 kg | 3250 L. | 310 x 430 x 1100 |

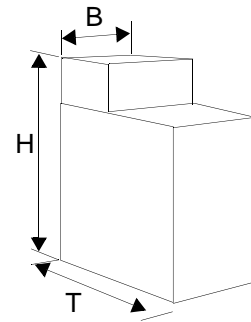
### Typ AVA

#### Technische Daten:

Betriebsdruck: 2 bis 6 bar  
Temperatur: 2 bis 40°C  
Versorgung: 230V/50Hz  
Steuerung: Autotrol/Volumetrisch

#### Technical data:

Operating pressure: 2 bis 6 bar  
Temperature: 2 - 40°C  
Feeding : 230V/50Hz  
Regulation: Autotrol/Volumetric



| Pos. Item | B.-Nr. O.-No. | FI    | HI    | SV     | KS    | K       | BxTxH (mm)       |
|-----------|---------------|-------|-------|--------|-------|---------|------------------|
| 1         | 530133        | 12 L. | 9 L.  | 1,5 kg | 30 kg | 1900 L. | 310 x 490 x 660  |
| 2         | 530134        | 20 L. | 15 L. | 2,7 kg | 70 kg | 3200 L. | 310 x 490 x 1100 |

### Typ AZFW

#### Technische Daten:

Betriebsdruck: 2 bis 6 bar  
Temperatur: 2 bis 60°C  
Versorgung: 230V/50Hz  
Intervall: 1 bis 6 Tage  
Steuerung: Fleck/Zeitsteuerung

#### Technical data:

Operating pressure: 2 bis 6 bar  
Temperature: 2 - 40°C  
Feeding : 230V/50Hz  
Interval: 1 to 6 days  
Regulation: Fleck/Time regulation



| Pos. Item | B.-Nr. O.-No. | FI    | HI    | SV     | KS    | K       | BxTxH (mm)       |
|-----------|---------------|-------|-------|--------|-------|---------|------------------|
| 1         | 530190        | 12 L. | 9 L.  | 1,5 kg | 30 kg | 1900 L. | 310 x 490 x 660  |
| 2         | 530191        | 20 L. | 15 L. | 2,7 kg | 70 kg | 3200 L. | 310 x 490 x 1100 |

### Typ AZV

#### Technische Daten:

Betriebsdruck: 2 bis 8 bar  
Temperatur: 5 bis 15°C  
Versorgung: 230V/50Hz  
Intervall: 1 bis 6 Tage  
Steuerung: DEV

#### Technical data:

Operating pressure: 2 bis 8 bar  
Temperature: 5 - 15°C  
Feeding : 230V/50Hz  
Interval: 1 to 6 days  
Regulation: DEV



| Abb. Pict. | B.-Nr. O.-No. | FI   | HI     | SV   | KS    | K       | BxTxH (mm)      |
|------------|---------------|------|--------|------|-------|---------|-----------------|
| 1          | 530129        | 8 L. | 5,8 L. | 1 kg | 20 kg | 1000 L. | 245 x 430 x 490 |

## Ersatzteile AZB/Spare parts AZB



| Abb. Pict. | Bestell-Nr. Order-No. | Beschreibung Description                       |
|------------|-----------------------|--|
| 1          | 530304                | Ventiloberteil/kpl./Valve upper part/cpl.      |
| 2          | 530303                | Abdeckung/Cover                                |
| 3          | 530300                | Transformator, 230V/24V - 12VA                 |
| 4          | 530301                | Getriebemotor (Stunden)/Gear engines (hours)   |
| 4          | 530305                | Getriebemotor (Minuten)/Gear engines (minutes) |
| 5          | 530302                | Mikroschalter/Microswitch                      |

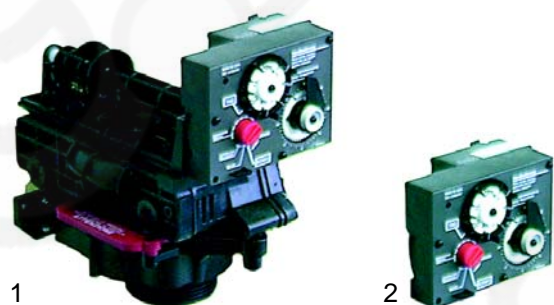
## Ersatzteile Universal/Spare parts universal



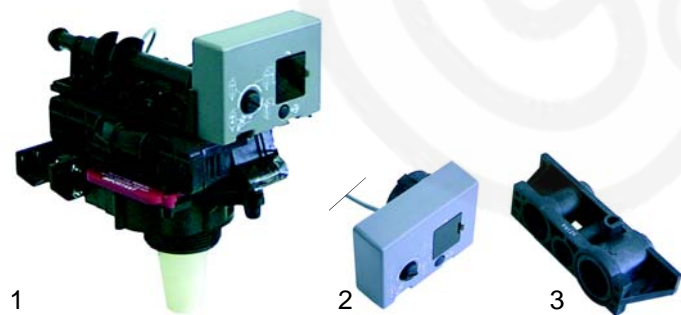
ohne Abbildung!  
without picture

| Abb. Pict. | Bestell-Nr. Order-No. | Beschreibung Description  |
|------------|-----------------------|---------------------------|
| 1          | 530324                | Kit-Membrane/Kit-membrane |
| 2          | 530325                | Kit-Bypass/Kit-Bypass     |

## Ersatzteile AZA, AVA/Spare parts AZA, AVA



| Abb. Pict. | Bestell-Nr. Order-No. | Beschreibung Description  | Typ Type |
|------------|-----------------------|---|----------|
| 1          | 530032                | Ventiloberteil/kpl., Zeitsteuerung<br>Valve upper part/cpl., time control | AZA      |
| 2          | 530034                | Timer, Zeitsteuerung<br>Timer, time control                               | AZA      |

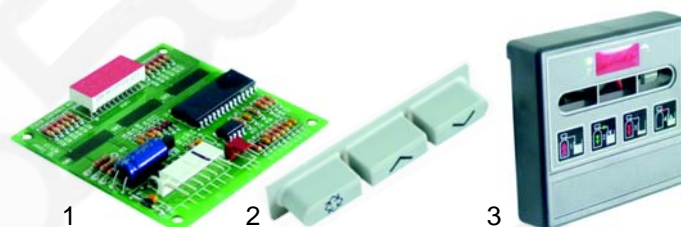


| Abb. Pict. | Bestell-Nr. Order-No. | Beschreibung Description   | Typ Type |
|------------|-----------------------|--|----------|
| 1          | 530033                | Ventiloberteil/kpl., volumetrisch<br>Valve upper part/cpl., volumetric | AVA      |
| 2          | 530040                | Timer, volumetrisch<br>Timer, volumetric                               | AVA      |
| 3          | 530042                | Zähladapter<br>Counting adapter  | AVA      |

## Ersatzteile AZFW/Spare parts AZFW



| Abb. Pict. | Bestell-Nr. Order-No. | Beschreibung Description                  |
|------------|-----------------------|---|
| 1          | 530267                | Ventiloberteil/kpl./Valve upper part/cpl. |
| 2          | 530266                | Ventiloberteil/Valve upper part           |



| Abb. Pict. | Bestell-Nr. Order-No. | Beschreibung Description |
|------------|-----------------------|--------------------------|
| 1          | 530260                | Elektronik/Electronics   |
| 2          | 530261                | Tasten/Push buttons      |
| 3          | 530262                | Abdeckung/Cover          |



| Abb. Pict. | Bestell-Nr. Order-No. | Beschreibung Description              |
|------------|-----------------------|---------------------------------------|
| 1          | 530263                | Transformator, 230V/24V               |
| 2          | 530264                | Getriebemotor, 24V/Gear engine, 24V   |
| 2          | 530268                | Getriebemotor, 230V/Gear engine, 230V |

# Mechanische Teile/Mechanical parts

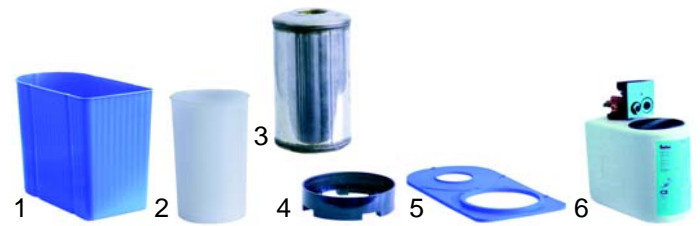
## Ersatzteile AZFW/Spare parts AZFW



ohne Abbildung!  
without picture!

| Abb. Pict. | Bestell-Nr. Order-No. | Beschreibung Description                |
|------------|-----------------------|---|
| 1          | 530041                | Transformator, 230V/12V, 6VA            |
| 2          | 530330                | Getriebemotor, 12VAC/Gear engine, 12VAC |
| 3          | 520300                | Bypass-Ventil, Bypass-valve             |
| 4          | 520318                | O-Ring-Satz/O-ring-set                  |

## Ersatzteile DEV/Spare parts DEV



| Abb. Pict. | Bestell-Nr. Order-No. | Beschreibung Description             |
|------------|-----------------------|--------------------------------------|
| 1          | 530135                | Satzbehälter/Grounds container       |
| 2          | 530136                | Flaschenüberzug/Cylinder cover       |
| 3          | 520309                | CNS-Flasche/Stainless steel cylinder |
| 4          | 530128                | Plastsockel/Plastic base             |
| 5          | 530030                | Abdeckung/Cover                      |
| 6          | 520138                | Deckel/Cap                           |

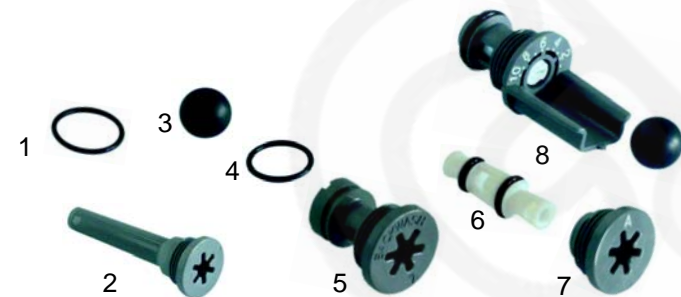


ohne Abb.!  
without pic.!

| Abb. Pict. | Bestell-Nr. Order-No. | Beschreibung Description                          |
|------------|-----------------------|---|
| 1          | 530035                | Ventiloberteil/Valve upper part                   |
| 2          | 530036                | Nockenwelle/Camshaft                              |
| 3          | 530037                | O-Ring-Satz/O-ring-set                            |
| 4          | 530038                | Luftventilhaube/Pneumatic valve cover             |
| 5          | 530026                | O-Ring (Lufthaube)/O-ring (pneumatic valve cover) |



| Abb. Pict. | Bestell-Nr. Order-No. | Beschreibung Description   |
|------------|-----------------------|--|
| 1          | 520301                | Verschraubung Sauglanze Salzbehälter/Salt tank intake lancette stock |
| 2          | 520302                | Sauglanze Salzbehälter/Salt tank intake lancette                     |
| 3          | 520307                | Verschraubung Behälter/Salt tank stock                               |
| 4          | 520315                | Sauglanze CNS-Flasche/Intake lancette CrNi-cylinder                  |
| 5          | 520303                | Nylonschlauch/Nylon cover  |
| 6          | 520306                | Überlaufverschraubung/Overflow stock                                 |



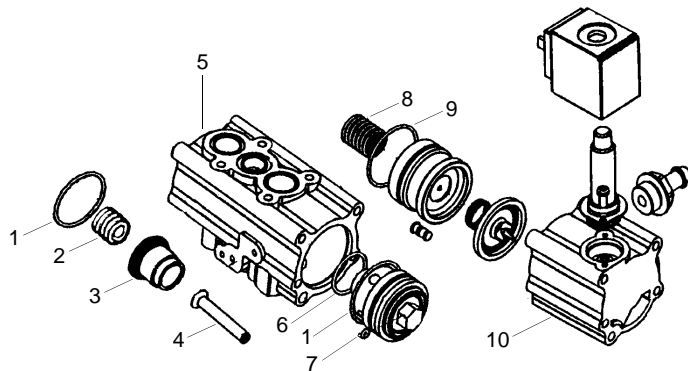
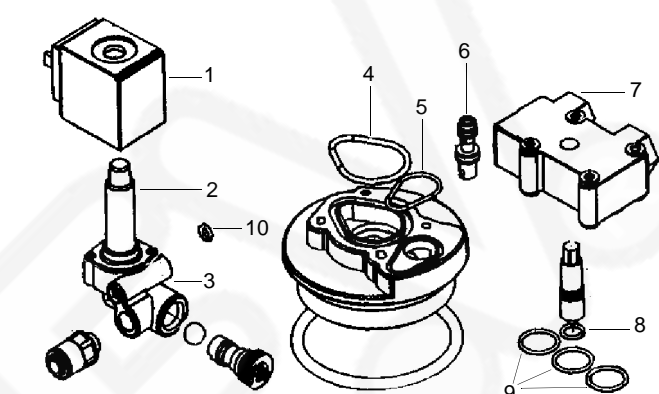
| Abb. Pict. | Bestell-Nr. Order-No. | Beschreibung Description                   |
|------------|-----------------------|--|
| 1          | 530311                | O-Ring/O-ring                              |
| 2          | 530312                | Filter                                     |
| 3          | 530316                | Kugel/Ball                                 |
| 4          | 530315                | O-Ring/O-ring                              |
| 5          | 530313                | Rückspülventil (7)/Return rinse valve      |
| 5          | 530314                | Rückspülventil (8)/Return rinse valve      |
| 6          | 530317                | Injector (weiß)/Injector (white)           |
| 6          | 530318                | Injector (blau)/Injector (blue)            |
| 6          | 530319                | Injector (rot)/Injector (red)              |
| 7          | 530320                | Kappe/Cap                                  |
| 7          | 530321                | Kappe/Cap                                  |
| 7          | 530322                | Kappe/Cap                                  |
| 8          | 530323                | Solemengenregler/Brine quantity controller |



| Abb. Pict. | Bestell-Nr. Order-No. | Beschreibung Description                 |
|------------|-----------------------|--|
| 1          | 530029                | Ventiloberteil/Valve upper part          |
| 2          | 520305                | Elektronikbox, 230V/Electronic box, 230V |



## Ersatzteile DEV/Spare parts DEV



| Abb. Pict. | Bestell-Nr. Order-No. | Beschreibung Description                   |
|------------|-----------------------|--|
| 1          | 530043                | Magnetspule/Magnetic coil                  |
| 2          | 530277                | Ventilkörper/Valve body                    |
| 3          | 530287                | Solemengenregler/Brine quantity controller |
| 4          | 530282                | O-Ring/O-ring                              |
| 5          | 530283                | O-Ring/O-ring                              |
| 6          | 530294                | Düse/Nozzle                                |
| 7          | 530286                | Oberteil/Upper part                        |
| 8          | 530293                | O-Ring/O-ring                              |
| 9          | 530284                | O-Ring/O-ring                              |
| 10         | 530288                | O-Ring/O-ring                              |

| Abb. Pict. | Bestell-Nr. Order-No. | Beschreibung Description |
|------------|-----------------------|--------------------------|
| 1          | 530297                | O-Ring/O-ring            |
| 2          | 530292                | Feder/Spring             |
| 3          | 530291                | Buchse/Nut               |
| 4          | 530289                | Stift/Pin                |
| 5          | 530281                | Körper/Body              |
| 6          | 530283                | O-Ring/O-ring            |
| 7          | 530280                | Membrane                 |
| 8          | 530295                | Feder/Spring             |
| 9          | 530296                | O-Ring/O-ring            |
| 10         | 530279                | Körper/Body              |

## Harze Resins



| Pos. Item | Bestell-Nr. Order-No. | Beschreibung Description                             |
|-----------|-----------------------|--|
| 1         | 520136                | Dowex HCR -S/S, 25 Liter<br>Dowex HCR -S/S, 25 liter |
| 1         | 530240                | Purolite 25 Liter<br>Purolite 25 liter               |

## Wasserhärte-Maßbesteck Devices for water hardness measuring



| Pos. Item | Bestell-Nr. Order-No. | Beschreibung Description            |
|-----------|-----------------------|-------------------------------------|
| 2         | 540620                | Gesamthärte<br>Overall hardness     |
| 2         | 540621                | Karbonathärte<br>Carbonate hardness |

## EVERPURE-Wasserfilter

### EVERPURE waterfilters

#### Legende:

**K** Kapazität bei 18°DH  
**D** Durchflußrate in Lit./min

#### Abbreviations:

**K** Capacity at 18°DH  
**D** Flow rate in Lit./min

#### Technische Daten:

Betriebsdruck: Max 10bar  
Temperatur: Max 38°C  
Filter: 0,5Mikron

#### Technical data:

Operating pressure: Max 10bar  
Temperature: Max 38°C  
Filter: 0,5 mikron

#### Typ BWSO



| Pos.<br>Item | Bestell-Nr.<br>Order-No. | Typ<br>Type | K     | D        | Maße (mm)<br>Ø x H |
|--------------|--------------------------|-------------|-------|----------|--------------------|
| 1            | 530107                   | BWSO 2000   | 486L  | 1,9L/min | 260 x 120 x 680    |
| 2            | 530140                   | BWSO 7000   | 1700L | 1,9L/min | 275 x 180 x 625    |

#### Ersatzpatronen-Enthärter/Spare cartridges



| Abb.<br>Pict. | Best.-Nr.<br>Ord.-No. | Typ<br>Type      | Abb.<br>Pict. | Best.-Nr.<br>Ord.-No. | Typ<br>Type      |
|---------------|-----------------------|------------------|---------------|-----------------------|------------------|
| 1             | 530110                | BWSO 2000 neu    | 2             | 530146                | BWSO 7000 neu    |
| 1             | 530111                | BWSO 2000 regen. | 2             | 530147                | BWSO 7000 regen. |

## Cuno-Wasserenthärter

### Cuno waterfilters

#### Legende:

**K** Kapazität in L bei 10°DH  
**D** Durchflußrate in Lit./min

#### Abbreviations:

**K** Capacity in L at 10°DH  
**D** Flow rate in Lit./min

#### Technische Daten:

Betriebsdruck: Max 10bar  
Temperatur: Max 38°C  
Filter: 0,5Mikron

#### Technical data:

Operating pressure: Max 10bar  
Temperature: Max 38°C  
Filter: 0,5 mikron



**Nicht mit Everpure BWSO 2000 kompatibel!**

| Pos.<br>Item | Bestell-Nr.<br>Order-No. | Typ<br>Type | K    | D        | Maße (mm)<br>Ø x H |
|--------------|--------------------------|-------------|------|----------|--------------------|
| 1            | 530018                   | SWC 9135    | 511L | 1,9L/min | 86 x 475           |

| Pos.<br>Item | Bestell-Nr.<br>Order-No. | Beschreibung<br>Description   |
|--------------|--------------------------|---|
| 2            | 530106                   | Anschlusskopf mit Absperrung/<br>Water filter head with isolating valve     |
| 3            | 530115                   | Anschlusskopf ohne Absperrung/<br>Water filter head without isolating valve |

#### Everpure-Anschlussköpfe/Everpure-Water filter heads



| Pos.<br>Item | Bestell-Nr.<br>Order-No. | Typ<br>Type | Beschreibung<br>Description                 | Passend für<br>Suitable for |
|--------------|--------------------------|-------------|---|-----------------------------|
| 1            | 530106                   | QL3         | Mit Absperrventil/<br>With isolating valve  | Everpure, Cuno              |
| 2            | 530115                   | QL3         | Ohne Absperrung/<br>Without isolating valve | Everpure, Cuno              |
| 3            | 520218                   |             | Reduzierung 3/4"- 3/8"                      |                             |

## EVERPURE-Wasserfilter EVERPURE waterfilters

### Legende:

**K** Kapazität in Liter  
**D** Durchflußrate in Lit./min

### Abbreviations:

**K** Capacity in liters  
**D** Flow rate in Lit./min

### Technische Daten:

Betriebsdruck: Max 10bar  
Temperatur: Max 38°C  
Filter: 0,5Mikron

### Technical data:

Operating pressure: Max 10bar  
Temperature: Max 38°C  
Filter: 0,5 mikron

Für Kaltgetränkegeräte/For cold drinks machines



| Abb. Pict. | Bestell-Nr. Order-No. | Typ Type | K      | D        | Ø x H (mm) |
|------------|-----------------------|----------|--------|----------|------------|
| 1          | 530113                | AC       | 2840L  | 1,9L/min | 80 x 260   |
| 2          | 530101                | 4C       | 5680L  | 1,9L/min | 80 x 370   |
| 3          | 530102                | MC       | 11350L | 6,3L/min | 80 x 530   |

Für Heißgetränkegeräte/For hot drinks machines



| Abb. Pict. | Bestell-Nr. Order-No. | Typ Type | K      | D        | Ø x H (mm) |
|------------|-----------------------|----------|--------|----------|------------|
| 1          | 530114                | AH       | 2840L  | 1,9L/min | 80 x 260   |
| 2          | 530103                | 4H       | 5680L  | 1,9L/min | 80 x 370   |
| 3          | 530104                | MH       | 11350L | 6,3L/min | 80 x 530   |

Für Eiswürfelmaschinen/Ice-cubes machines



| Abb. Pict. | Bestell-Nr. Order-No. | Typ Type | K     | D        | Ø x H (mm) |
|------------|-----------------------|----------|-------|----------|------------|
| 1          | 530176                | 2K Plus  | 2840L | 1,9L/min | 80 x 260   |
| 2          | 530177                | 4K Plus  | 5680L | 1,9L     | 80 x 370   |

## CUNO-Wasserfilter CUNO-waterfilters

### Legende:

**K** Kapazität in Liter  
**D** Durchflußrate in Lit./min  
**F** Filter in Mikron

### Abbreviations:

**K** Capacity in liters  
**D** Flow rate in Lit./min  
**F** Filter in mikron

### Technische Daten:

Wasserdruckdruck: Max 8,6bar  
Temperatur: Max 38°C

### Technical data:

Water pressure: Max 8,6 bar  
Temperature: 38°C

Für Kaltgetränkegeräte/For cold drinks machines



| Abb. Pict. | B.-Nr. O.-No. | Typ Type | K      | D        | F          | Ø x H (mm) |
|------------|---------------|----------|--------|----------|------------|------------|
| 1          | 530010        | CS25     | 7571L  | 3,8L/min | 0,5 Mikron | 86 x 286   |
| 2          | 530011        | CFS9812Y | 34069L | 5,7L/min | 0,5 Mikron | 86 x 367   |

Für Heißgetränkegeräte/For hot drinks machines



| Abb. Pict. | B.-Nr. O.-No. | Typ Type | K     | D         | F        | Ø x H (mm) |
|------------|---------------|----------|-------|-----------|----------|------------|
| 1          | 530012        | CSM      | 9464  | 3,8L/min. | 1 Mikron | 86 x 286   |
| 2          | 530013        | CFS9112X | 37854 | 5,7       | 1 Mikron | 86 x 367   |



## CUNO-Wasserfilter

### CUNO-waterfilters

Für Kaffee- und Vendingmaschinen/  
For coffee- and vending machines

#### Legende:

**K** Kapazität in Liter  
**D** Durchflußrate in Lit./min  
**F** Filter in Mikron

#### Abbreviations:

**K** Capacity in liters  
**D** Flow rate in Lit./min  
**F** Filter in mikron

#### Technische Daten:

Wasserdruckdruck: Max 8,6bar  
Temperatur: Max 38°C  
Anschluss: 1/4"

#### Technical data:

Water pressure: Max 8,6 bar  
Temperature: 38°C  
Connection: 1/4"



| Abb. Pict. | B.-Nr. O.-No. | Typ Type | K     | D        | F | Ø x H (mm) |
|------------|---------------|----------|-------|----------|---|------------|
| 1          | 530014        | CS451    | 5678L | 1,9L/min | - | 64 x 240   |

#### Ersatzfilter/Spare cartridges



| Abb. Pict. | B.-Nr. O.-No. | Typ Type | K     | D        | F | Ø x H (mm) |
|------------|---------------|----------|-------|----------|---|------------|
| 1          | 530015        | CS51     | 5678L | 1,9L/min | - | 59 x 210   |

## Vorfilter für Wasserenthärter

### Pre-filter for water softener

#### Technische Daten:

Durchflussmenge: 1500Lit/h  
Betriebsdruck: 1 bis 8 bar  
Temperatur: 5 bis 20°C

#### Technical data:

Flow rate: Max 8,6 bar  
Operating pressure: 1 bis 8 bar  
Temperature: 5 -20°C

#### Typ NL



| Pos. Item | Bestell-Nr. Order-No. | G    | L (mm) | Ø (mm) | Für Typ For Type                     |
|-----------|-----------------------|------|--------|--------|--------------------------------------|
| 1         | 530178                | 3/8" | 58     | 59     | MB, MM, MMV, AZB (8L), AZA (8L), AZV |
| 2         | 530179                | 1/2" | 58     | 59     | AZA (8L), AZV                        |

#### Typ NK



| Abb. Pict. | Bestell-Nr. Order-No. | G    | L (mm) | H (mm) | Für Typ For Type   |
|------------|-----------------------|------|--------|--------|--|
| 1          | 530182                | 3/8" | 180    | 180,5  | MB, MM, MMV, AZB (8L), AZA (8L), AZV                       |
| 1          | 530183                | 1/2" | 180    | 180,5  | AZA (8L), AZV  |
| 2          | 530188                | 3/4" | 180    | 306,5  | AZA (12L, 20L), AZB (12L), AVA (12L, 20L), AZFW (12L, 20L) |



| Abb. Pict. | Bestell-Nr. Order-No. | Beschreibung Description  |
|------------|-----------------------|---|
| 1          | 530186                | Ersatzfilter (530182/530183)<br>Spare cartridge (530182/530183) |
| 2          | 530189                | Ersatzfilter (530188)<br>Spare cartridge (530188)               |
| 3          | 530187                | Schlüssel<br>Key  |