

Magnetventile/Solenoid valves

Scem/Parker



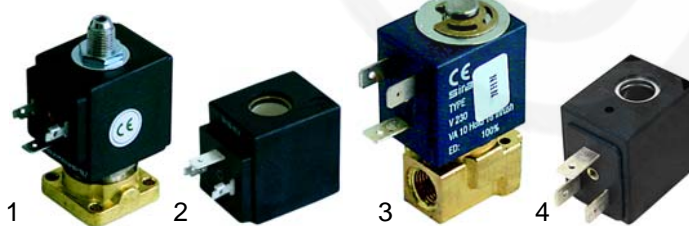
| Abb. Pict. | Bestell-Nr. Order-No. | Beschreibung Description |
|------------|-----------------------|---|
| 1 | 370057 | kpl., 3 Wege, 230VAC cpl., 3 ways, 230VAC |
| 2 | 370062 | Ventilkörper, 3 Wege Solenoid square pin, 3 ways |
| 3 | 370202 | kpl., 2 Wege, 230VAC cpl., 2 ways, 230VAC |
| 4 | 371029 | Magnetspule, 230VAC Magnetic coil, 230V |

Lucifer



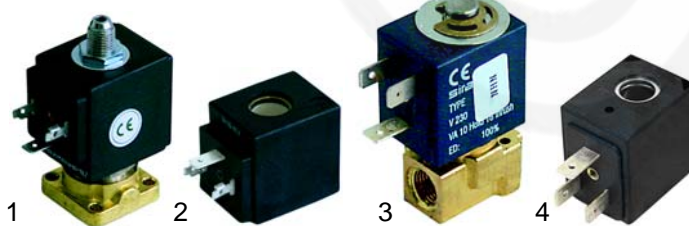
| Abb. Pict. | Bestell-Nr. Order-No. | Beschreibung Description |
|------------|-----------------------|---|
| 1 | 370053 | kpl., 3 Wege, 230VAC cpl., 3 ways, 230VAC |
| 2 | 370061 | Ventilkörper, 3 Wege Solenoid square pin, 3 ways |
| 3 | 371031 | Magnetspule, 230VAC Magnetic coil, 230VAC |

ODE



| Abb. Pict. | Bestell-Nr. Order-No. | Beschreibung Description |
|------------|-----------------------|--|
| 1 | 370203 | kpl., 3 Wege, 230VAC cpl., 3 ways, 230VAC |
| 2 | 371150 | Magnetspule, 230VAC Solenoid Magnetic coil, 230VAC |
| 3 | 370168 | kpl., 1/8", 2 Wege, 230VAC cpl., 1/8", 2 ways, 230VAC |
| 4 | 371071 | Magnetspule, 230VAC Magnetic coil, 230VAC |

Sirai



Magnetventile Zubehör/Solenoid valve accessories



| Abb. Pict. | Bestell-Nr. Order-No. | Beschreibung Description | Kennb. Letter |
|------------|-----------------------|----------------------------------|---------------|
| 1 | 371091 | Stecker/klein Plug/small | B |
| 2 | 371090 | Stecker/groß Plug/big | A |
| 3 | 371095 | O-Ring/viton O-Ring/viton | A |
| 4 | 371100 | O-Ring/Silikon O-Ring/Silikon | A |

Pressostate/Pressure switches



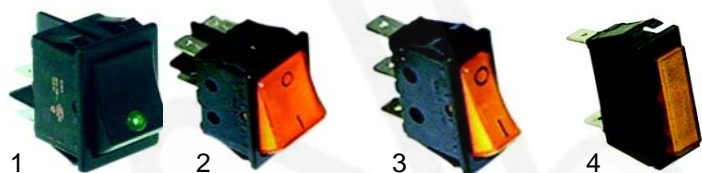
| Abb. Pict. | Bestell-Nr. Order-No. | Beschreibung Description |
|------------|-----------------------|---|
| 1 | 541021 | Pressostat, 3-polig Pressure switch, 3 poles |
| 2 | 541107 | Pressostat, 2-polig Pressure switch, 2 poles |

Schütze, Relais/Contactors, relays



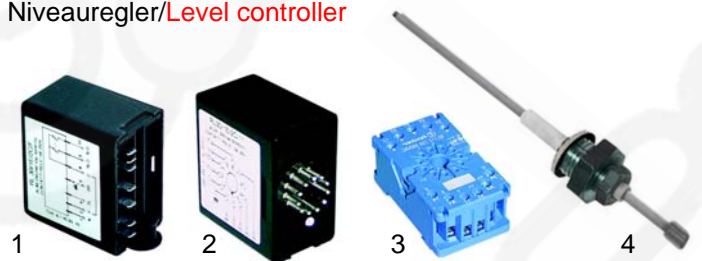
| Abb. Pict. | Bestell-Nr. Order-No. | Beschreibung Description |
|------------|-----------------------|------------------------------------|
| 1 | 380213 | Schutz, 230V Contactor, 230V |
| 1 | 380401 | Schütze, 12VDC Contactor, 12VDC |
| 2 | 380132 | Relais, 230V Relay, 230V |
| 3 | 380136 | Sockel, 11-polig Base, 11 poles |

Schalter, Lampen/Switches, lamps



| Abb. Pict. | Bestell-Nr. Order-No. | Beschreibung Description | Einbaumaß Socket dim. |
|------------|-----------------------|--|-----------------------|
| 1 | 301062 | Schalter, LED/grün, 230V Switch, LED/green 230V | 30 x 22mm |
| 2 | 301002 | Schalter, /gelb, 230V Switch, /yellow, 230V | 30 x 22mm |
| 3 | 301011 | Schalter, /gelb, 230V Switch, /yellow, 230V | 30 x 11mm |
| 4 | 359159 | Signallampe/gelb, 230V Signal lamp/yellow, 230V | 30 x 11mm |

Niveauregler/Level controller



| Abb. Pict. | Bestell-Nr. Order-No. | Beschreibung Description |
|------------|-----------------------|--|
| 1 | 400019 | Niveauregler, RL30/1E - 2C/F Level controller, RL30/1E - 2C/F |
| 2 | 400017 | Niveauregler, RL30/1E - 2C/11 Level controller, RL30/1E - 2C/11 |
| 3 | 380136 | Sockel, 11-polig Base, 11 poles |
| 4 | 400020 | Niveausonde, 150mm Level probe, 150mm |

Tastaturen/Keyboards



| Abb. Pict. | Bestell-Nr. Order-No. | Beschreibung Description |
|------------|-----------------------|--|
| 1 | 400360 | Tastatur (ECO) Keyboard (ECO) |
| 2 | 400337 | Tastatur (Systema) Keyboard (Systema) |

Flowmeter/Electronics, Flowmeter



| Abb. Pict. | Bestell-Nr. Order-No. | Beschreibung Description |
|------------|-----------------------|------------------------------------|
| 1 | 400004 | Flowmeter, 1/4" Flowmeter, 1/4" |
| 2 | 400256 | Stecker Plugs |
| 3 | 400257 | Zählrad Flowmeter reel |
| 4 | 400258 | Gehäusedichtung Case gasket |



| Abb. Pict. | Bestell-Nr. Order-No. | Beschreibung Description |
|------------|-----------------------|---|
| 1 | 417045 | Heizkörper (1 Gruppe), 1500W, 230V Heater (1 group), 1500W, 230V |
| 2 | 417046 | Heizkörper (1 Gruppe), 2000W, 230V Heater (1 group), 2000W, 230V |
| 3 | 528022 | Dichtung, 1/4" (Teflon) Gasket, 1/4" (teflon) |
| 4 | 528017 | Dichtung, 1/4" (Klingerit) Gasket, 1/4" (klingerit) |



| Abb. Pict. | Bestell-Nr. Order-No. | Beschreibung Description |
|------------|-----------------------|---|
| 1 | 417048 | Heizkörper (2 Gruppen), 2400W, 230V Heater (2 groups), 2400W, 230V |
| 1 | 417047 | Heizkörper (2 Gruppen), 3000W, 230V Heater (2 groups), 3000W, 230V |
| 2 | 417345 | Heizkörper (3 Gruppen), 4500W, 230V Heater (3 groups), 4500W, 230V |
| 3 | 528022 | Dichtung, 1/4" (Teflon) Gasket, 1/4" (teflon) |
| 4 | 528017 | Dichtung, 1/4" (Klingerit) Gasket, 1/4" (klingerit) |

Passend für/Suitable for Carimali

Kesseldichtungen/Pot gaskets



| Abb. Pict. | Bestell-Nr. Order-No. | Beschreibung Description |
|------------|-----------------------|---|
| 1 | 528153 | Dichtung, 142 x 130 x 3mm Gasket, 142 x 130 x 3mm |
| 2 | 528188 | Dichtung (Teflon), 142 x 130 x 3mm Gasket (teflon), 142 x 130 x 3mm |
| 3 | 528187 | Dichtung, 10 Löcher, 230 x 175 x 3mm Gasket, 10 holes, 230 x 175 x 3mm |

Manometer/Manometer



| Abb. Pict. | Bestell-Nr. Order-No. | Beschreibung Description |
|------------|-----------------------|--|
| 1 | 541228 | Manometer, 0 - 16bar, 1/8", Ø42mm Manometer, 0 - 16bar, 1/8", Ø42mm |
| 2 | 541229 | Manometer, 0 - 2,5bar, 1/8", Ø42mm Manometer, 0 - 2,5bar, 1/8", Ø42mm |
| 3 | 541230 | Manometer, 0 - 2,5bar, 1/8", Ø42mm Manometer, 0 - 2,5bar, 1/8", Ø42mm |

Ventile/Valves



| Abb. Pict. | Bestell-Nr. Order-No. | Beschreibung Description |
|------------|-----------------------|--------------------------------------|
| 1 | 529301 | Rückschlagventil Non-return valve |



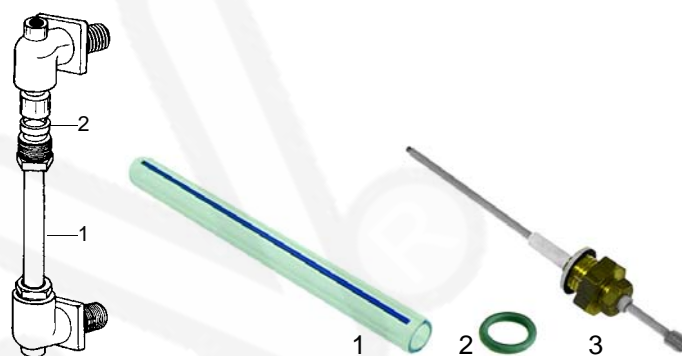
| Abb. Pict. | Bestell-Nr. Order-No. | Beschreibung Description |
|------------|-----------------------|--|
| 1 | 529312 | Sicherheitsventil, 1,8bar, 3/8" Safety valve, 1,8bar, 3/8" |
| 2 | 529316 | Sicherheitsventil/plombiert, 1,8bar, 3/8" Safety valve/sealed, 1,8bar, 3/8" |
| 3 | 529308 | Sicherheitsventil, 1,8bar, M19 Safety valve, 1,8bar, M19 |
| 4 | 529349 | Cu-Dichtung, 3/8" Cu-gasket, 3/8" |

Ventile/Valves



| Abb. Pict. | Bestell-Nr. Order-No. | Beschreibung Description |
|------------|-----------------------|--|
| 1 | 529303 | Entlüftungsventil, 1/4" Empty valve, 1/4" |
| 2 | 529304 | Entlüftungsventil, 1/4" Empty valve, 1/4" |
| 3 | 529361 | Cu-Dichtung, 1/4" Cu-gasket, 1/4" |

Wasserstandsglas/Level glass

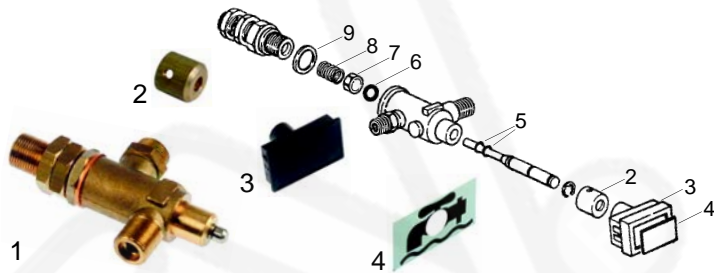


| Abb. Pict. | Bestell-Nr. Order-No. | Beschreibung Description |
|------------|-----------------------|---|
| 1 | 529410 | Wasserstandsglas, 135 x 11mm Level glass, 135 x 11mm |
| 2 | 529412 | Wasserstandsglasdichtung Level glass gasket |
| 3 | 400020 | Niveausonde, 150mm Level probe, 150mm |



| Abb. Pict. | Bestell-Nr. Order-No. | Beschreibung Description |
|------------|-----------------------|---|
| 1 | 529411 | Wasserstandsglas, 130 x 12mm Level glass, 130 x 12mm |
| 2 | 529413 | Wasserstandsglasdichtung Level glass gasket |
| 3 | 529414 | Pressscheibe Press washer |
| 4 | 529469 | Überwurfschraube Pipe upper nut |
| 5 | 400020 | Niveausonde, 150mm Level probe, 150mm |

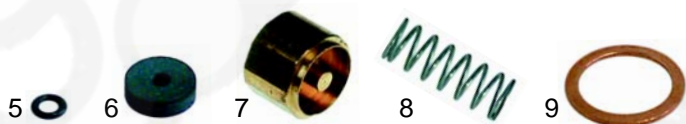
Wasserfüllventil/Water intake valve



| Abb. Pict. | Bestell-Nr. Order-No. | Beschreibung Description |
|------------|-----------------------|--|
| 1 | 529642 | Wasserfüllventil komplett Water intake valve assembly |
| 2 | 529470 | Verbindungsstück Junction part |
| 3 | 529471 | Knopf Button |
| 4 | 529472 | Einlageschild Insertion label |

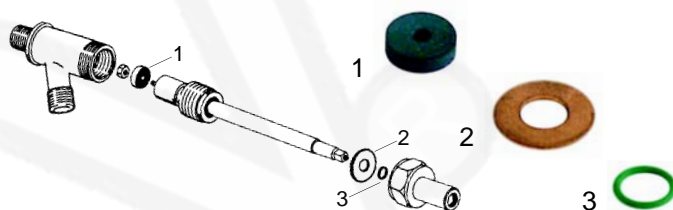


| Abb. Pict. | Bestell-Nr. Order-No. | Beschreibung Description |
|------------|-----------------------|---------------------------------------|
| 2 | 529477 | Kugel (CNS) Ball (stainless steel) |
| 3 | 529478 | O-Ring (Viton) O-ring (viton) |
| 4 | 529479 | Feder Spring |
| 5 | 529480 | Cu-Dichtung Cu-gasket |
| 6 | 529481 | Feder Spring |
| 7 | 529482 | O-Ring O-ring |



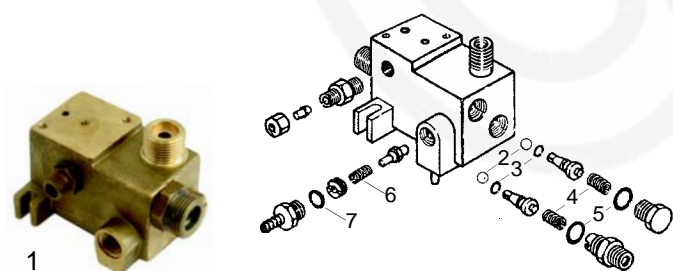
| Abb. Pict. | Bestell-Nr. Order-No. | Beschreibung Description |
|------------|-----------------------|----------------------------------|
| 5 | 528815 | O-Ring O-ring |
| 6 | 529486 | Dichtung Gasket |
| 7 | 529485 | Dichtungsträger Gasket holder |
| 8 | 529722 | Feder Spring |
| 9 | 529483 | Cu-Dichtung Cu-gasket |

Hähne/Taps



| Abb. Pict. | Bestell-Nr. Order-No. | Beschreibung Description |
|------------|-----------------------|--------------------------|
| 1 | 529474 | Dichtung Gasket |
| 2 | 529475 | Scheibe Washer |
| 3 | 529476 | O-Ring O-ring |

Wasserfüllgruppe/Water intake group



| Abb. Pict. | Bestell-Nr. Order-No. | Beschreibung Description |
|------------|-----------------------|--|
| 1 | 529473 | Wasserfüllpumpe komplett Water intake pump assembly |

Rohre/Pipes



| Abb. Pict. | Bestell-Nr. Order-No. | Beschreibung Description |
|------------|-----------------------|--------------------------------------|
| 1 | 529672 | Dampfrohr/kurz Steampipe/short |
| 2 | 529671 | Dampfrohr/lang Steampipe/long |
| 3 | 529673 | Düse Nozzle |
| 4 | 528216 | O-Ring (Viton) O-ring (viton) |
| 5 | 528217 | Dichtung (Teflon) Gasket (teflon) |

Passend für/Suitable for Carimali

Hähne/Taps



| Abb. Pict. | Bestell-Nr. Order-No. | Beschreibung Description |
|------------|-----------------------|--------------------------|
| 1 | 529640 | Wasser, kpl. Water, cpl. |
| 2 | 529641 | Dampf, kpl. Steam, cpl. |

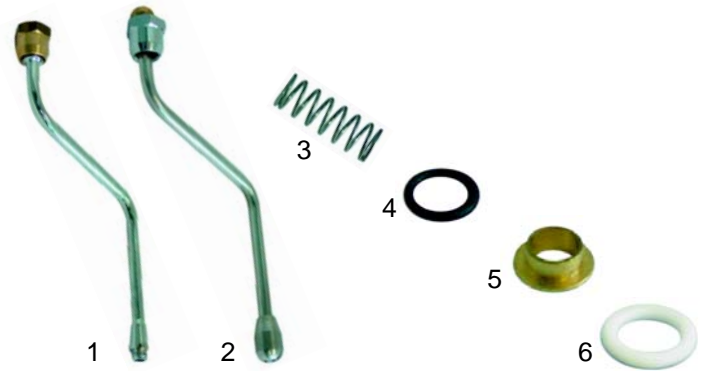


| Abb. Pict. | Bestell-Nr. Order-No. | Beschreibung Description |
|------------|-----------------------|--|
| 3 | 529483 | Cu-Dichtung Cu-gasket |
| 4 | 529722 | Feder Spring |
| 5 | 529485 | Dichtungsträger Gasket holder |
| 6 | 529486 | Dichtung Gasket |
| 7 | 529863 | Entlüftungsventil, 1/4" (nur Dampf) Empty valve, 1/4" (only steam) |
| 8 | 528815 | O-Ring/Wellen-O-ring/shaft- |



| Abb. Pict. | Bestell-Nr. Order-No. | Beschreibung Description |
|------------|-----------------------|--|
| 1 | 111105 | Griff (Dampf) Knob (steam) |
| 2 | 111107 | Griff (Wasserfüllventil) Knob (water intake valve) |
| 3 | 529725 | Feder Spring |
| 4 | 529724 | Seegering Seeger circlip ring |
| 5 | 111106 | Mitnehmer Driver |

Rohre/Pipes



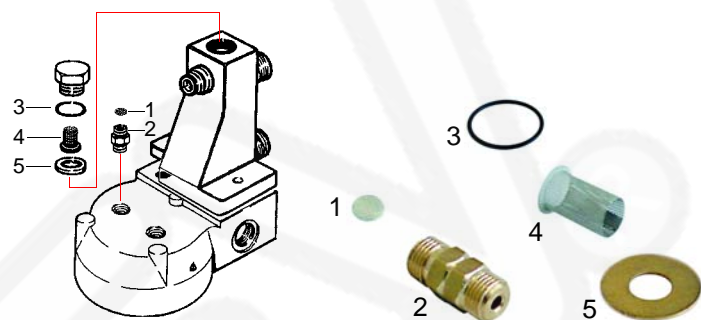
| Abb. Pict. | Bestell-Nr. Order-No. | Beschreibung Description |
|------------|-----------------------|---|
| 1 | 529674 | Dampfrohr Steampipe |
| 2 | 529675 | Dampfrohr (CNS) Steampipe (stainless steel) |
| 3 | 529722 | Feder Spring |
| 4 | 528216 | O-Ring O-ring |
| 5 | 529488 | Buchse (Messing) Bush (brass) |
| 6 | 528217 | Dichtung (Teflon) Gasket (teflon) |

Rohre/Pipes



| Abb. Pict. | Bestell-Nr. Order-No. | Beschreibung Description |
|------------|-----------------------|--|
| 1 | 529646 | Dampfrohr (UNO) Steampipe (UNO) |
| 2 | 529648 | Wasserrohr Waterpipe |
| 3 | 529649 | Wasserrohr (Systema) Waterpipe (Systema) |

Gruppe/Group



| Abb. Pict. | Bestell-Nr. Order-No. | Beschreibung Description |
|------------|-----------------------|---------------------------|
| 1 | 529489 | Sieb Filter |
| 2 | 529490 | Düse, 1,2mm Nozzle, 1,2mm |
| 3 | 529491 | O-Ring O-ring |
| 4 | 529492 | Sieb Filter |
| 5 | 529493 | Dichtung Gasket |

Siebträgerdichtungen/Filterholder gaskets



| Abb. Pict. | Bestell-Nr. Order-No. | Beschreibung Description |
|------------|-----------------------|--|
| 1 | 528068 | Distanzeinlage, 69 x 57mm Shim gasket, 69 x 57mm |
| 2 | 528044 | Siebträgerdichtung/alt, 69 x 57 x 7,5mm Holder gasket/old, 69 x 57 x 7,5mm |

Dusche/Shower



| Abb. Pict. | Bestell-Nr. Order-No. | Beschreibung Description |
|------------|-----------------------|---|
| 1 | 529494 | Wasserverteilerdichtung Water dispersion gasket |
| 2 | 529495 | Wasserverteiler Water dispersion |
| 3 | 529091 | Dusche Shower |

Blindfilter/Blindfilter



| Abb. Pict. | Bestell-Nr. Order-No. | Beschreibung Description |
|------------|-----------------------|-------------------------------------|
| 1 | 529024 | Reinigungsmembrane Cleaning membran |
| 2 | 529023 | Blindfilter Blindfilter |

Sieb/Filter



| Abb. Pict. | Bestell-Nr. Order-No. | Beschreibung Description |
|------------|-----------------------|---|
| 1 | 529021 | Sieb, 1 Tasse (7g) Filter, 1 cup (7g) |
| 2 | 529022 | Sieb, 2 Tassen (14g) Filter, 2 cups (14g) |
| 3 | 529079 | Siebträgerfeder Filterholder spring |

Siebträger/Filterholder



| Abb. Pict. | Bestell-Nr. Order-No. | Beschreibung Description |
|------------|-----------------------|---|
| 1 | 529069 | Siebträger, M10 Filterholder, M10 |
| 2 | 529053 | Siebträgergriff, M10 Filterholder handle, M10 |

Ausläufe/Spouts



| Abb. Pict. | Bestell-Nr. Order-No. | Beschreibung Description |
|------------|-----------------------|--|
| 1 | 529001 | Auslauf 3/8", 1 Weg lang Spout 3/8", one way long |
| 2 | 529003 | Auslauf 3/8", 1 Weg gebogen Spout 3/8", one way curved |
| 3 | 529007 | Auslauf 3/8", 2 Wege kurz Spout 3/8", two way short |