

## Magnetventile/Solenoid valves

Scem/Parker



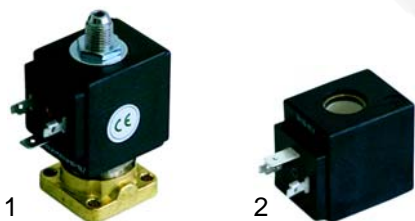
| Abb. Pict. | Bestell-Nr. Order-No. | Beschreibung Description                            | Vergl.-Nr. Comp.-No. |
|------------|-----------------------|---|----------------------|
| 1          | 370057                | kpl., 3 Wege, 230V<br>cpl., 3 ways, 230V            | 01947                |
| 2          | 370062                | Ventilkörper, 3 Wege<br>Solenoid square pin, 3 ways |                      |
| 3          | 370206                | 1/8"/kpl., 2 Wege, 230V<br>1/8"/cpl., 2 ways, 230V  |                      |
| 4          | 371029                | Magnetspule, 230V<br>Magnetic coil, 230V            |                      |

Lucifer



| Abb. Pict. | Bestell-Nr. Order-No. | Beschreibung Description  | Vergl.-Nr. Comp.-No. |
|------------|-----------------------|---|----------------------|
| 1          | 370053                | Ventil/kpl., 3 Wege, 230V<br>Valve, 3 ways, 230V                |                      |
| 2          | 370061                | Ventilkörper, 3 Wege<br>Solenoid square pin, 3 ways             |                      |
| 3          | 370072                | Ventil 1/8"/kpl., 2 Wege, 230V<br>Valve 1/8"/cpl., 2 ways, 230V |                      |
| 4          | 371031                | Magnetspule, 230V<br>Magnetic coil, 230V                        |                      |

ODE



| Abb. Pict. | Bestell-Nr. Order-No. | Beschreibung Description                         | Vergl.-Nr. Comp.-No. |
|------------|-----------------------|--|----------------------|
| 1          | 370203                | Ventil/kpl., 3 Wege, 230V<br>Valve, 3 ways, 230V |                      |
| 2          | 371150                | Magnetspule, 230V<br>Magnetic coil, 230V         |                      |

## Magnetventile/Solenoid valves

M&M



| Abb. Pict. | Best.-Nr. Ord.-No. | Beschreibung Description                               | Gerätetyp Device type | V.-Nr. C.-No. |
|------------|--------------------|--|-----------------------|---------------|
| 1          | 370095             | kpl., 2 Wege, 230V<br>cpl., 2 ways, 230V               |                       | 09435         |
| 2          | 370165             | kpl., 2 Wege, 1/8", 230V<br>cpl., 2 ways, 1/8", 230V   | Office                | 06571         |
| 2          | 370167             | kpl., 2 Wege, 1/8", 24VDC<br>cpl., 2 ways, 1/8", 24VDC | Office                | 10446         |
| 3          | 371022             | Magnetspule, 230V<br>Magnetic coil, 230V               |                       |               |
| 4          | 371091             | Stecker/klein<br>Plug/small                            |                       |               |

Sirai



| Abb. Pict. | B.-Nr. O.-No. | Beschreibung Description   | Gerätet. Device t. | V.-Nr. C.-No. |
|------------|---------------|--|--------------------|---------------|
| 1          | 370169        | kpl., 2 Wege, 1/8", 230V, 1,6 l/min.<br>cpl., 2 ways, 1/8", 230V, 1,6 l/min. | Office             | 09926         |
| 1          | 370168        | kpl., 2 Wege, 1/8", 230V, 2,3 l/min.<br>cpl., 2 ways, 1/8", 230V, 2,3 l/min. | Office             | 09927         |
| 2          | 371071        | Magnetspule, 230V<br>Magnetic coil, 230V                                     |                    |               |

Olab



| Pos. Item | B.-Nr. O.-No. | Beschreibung Description                               | Gerätetyp Device type | V.-Nr. C.-No. |
|-----------|---------------|--|-----------------------|---------------|
| 1         | 370166        | kpl., 3 Wege, 1/8", 24VDC<br>cpl., 3 ways, 1/8", 24VDC | Office                | 10153         |

## Magnetventile Zubehör/Solenoid valve accessories



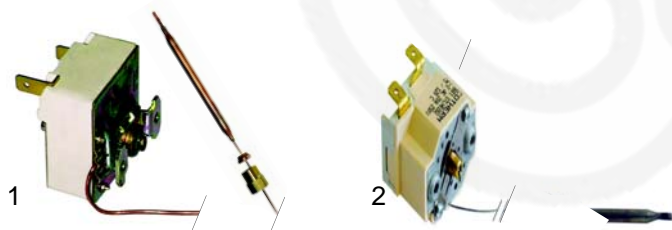
| Abb. Pict. | Bestell-Nr. Order-No. | Beschreibung Description         | Gerätetyp Device type | Vergl.-Nr. Comp.-No. |
|------------|-----------------------|----------------------------------|-----------------------|----------------------|
| 1          | 371090                | Stecker/groß<br>Plug/ big        |                       |                      |
| 2          | 371095                | O-Ring/viton<br>O-Ring/viton     |                       | 00833                |
| 3          | 371100                | O-Ring/Silikon<br>O-Ring/Silicon |                       |                      |

## Pressostate/Schalter/Pressure switches/switches



| Abb. Pict. | Best.-Nr. Ord.-No. | Beschreibung Description                                     | Gerätetyp Device type | V.-Nr. C.-No. |
|------------|--------------------|--|-----------------------|---------------|
| 1          | 541021             | 3 polig, 1/4", 0,5 - 1,2 bar<br>3 poles, 1/4", 0,5 - 1,2 bar |                       | 00630         |
| 2          | 541154             | 1 polig, 1/8", 2 bar<br>1 poles, 1/8", 2 bar                 | Office                | 10598         |
| 2          | 541155             | 1 polig, 1/8", 1 - 2,5 bar<br>1 poles, 1/8", 1 - 2,5 bar     | Cappuccino            | 09935         |

## Thermostate/Thermostats



| Abb. Pict. | Best.-Nr. Ord.-No. | Beschreibung Description | Gerätetyp Device type | V.-Nr. C.-No. |
|------------|--------------------|--------------------------|-----------------------|---------------|
| 1          | 390114             | Thermostat 110°C         | Lady, Club            | 00651         |
| 2          | 390109             | Thermostat               | Belle Epoque Junior   | 12601         |

## Thermostate/Thermostats



| Abb. Pict. | B.-Nr. O.-No. | Beschreibung Description                                 | Gerätetyp Device type   | V.-Nr. C.-No. |
|------------|---------------|--|---|---------------|
| 1          | 390125        | Anlegethermostat, 2-pol.<br>Stoke thermostat, 2 poles    | America plus<br>Portofino/America                                       | 01977         |
| 2          | 390105        | Anlegethermostat, 2-pol.<br>Stoke thermostat, 2 poles    | Gradisca, Firenze<br>Century<br>100/105, 200, 205<br>Belle Epoque 1/2Gr | 01978         |
| 3          | 390128        | Anlegethermostat, 95<br>Stoke thermostat, 95             | Mini Pods   | 06524         |
| 3          | 390322        | Anlegethermostat, 100<br>Stoke thermostat, 100           | Lady, Club  | 09415         |
| 3          | 390152        | Anlegethermostat, 107<br>Stoke thermostat, 107           | Lady, Club  | 08701         |
| 3          | 375160        | Anlegethermostat, 110<br>Stoke thermostat, 110           | Lady, Club  | 10157         |
| 3          | 390129        | Sicherheitsthermostat, 125°C<br>Safety thermostat, 125°C | Mini Pods   | 06525         |
| 3          | 390323        | Sicherheitsthermostat, 145°C<br>Safety thermostat, 145°C | Lady, Club  | 08702         |
| 3          | 390372        | Sicherheitsthermostat, 165°C<br>Safety thermostat, 165°C | Mini Pods, Lady<br>Capuccino/CP1/2<br>RB1/RB2                           | 08703         |

## Schalter/Switches



| Abb. Pict. | Best.-Nr. Ord.-No. | Beschreibung Description               | Gerätetyp Device type                                 | Ver.-Nr. Com.-No. |
|------------|--------------------|--|---|-------------------|
| 1          | 346089             | Hauptschalter, 16A<br>Main switch, 16A | 100/105/200/205<br>Century/Cappuccino                 | 04990             |
| 2          | 345112             | Hauptschalter, 20A<br>Main switch, 20A | Firenze, Gradisca<br>Portofino/America                | 04991             |
| 3          | 111100             | Knebel<br>Knob                         | 100/105/200/205<br>Firenze                            | 00772             |
| 4          | 112010             | Knebel<br>Knob                         | Century/Cappuccino<br>Gradisca, Portofino.<br>America | 04404             |



| Abb. Pict. | Best.-Nr. Ord.-No. | Beschreibung Description               | Gerätetyp Device type | V.-Nr. C.-No. |
|------------|--------------------|--|-----------------------|---------------|
| 1          | 345111             | Hauptschalter, 16A<br>Main switch, 16A | Belle Epoque 1/2 Gr   | 00674         |
| 2          | 346090             | Hauptschalter, 25A<br>Main switch, 25A | Belle Epoque 1/2 Gr   | 00675         |
| 3          | 111100             | Knebel<br>Knob                         | Belle Epoque 1/2 Gr   | 00772         |

## Schalter/Switches

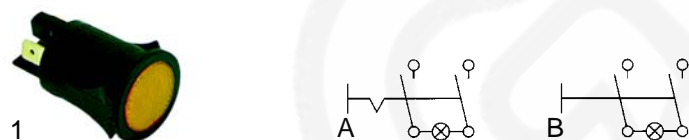


| Abb. Pict. | B.-Nr. O.-No. | Beschreibung Description                      | Gerätetyp Device type | V.-Nr. C.-No. |
|------------|---------------|---|-----------------------|---------------|
| 1          | 400034        | Schalter, 6 Stellungen<br>Switch, 6 Positions | Belle Epoque 1/2 Gr   | 01814         |
| 2          | 112009        | Knebel<br>Knob                                | Belle Epoque 1/2 Gr   | 01438         |
| 3          | 345032        | Mikroschalter<br>Microswitch                  | Belle Epoque 1/2 Gr   |               |

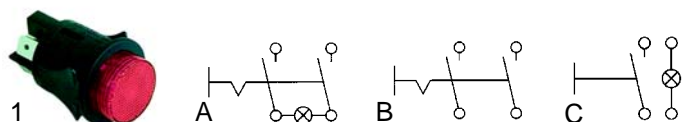


| Abb. Pict. | B.-Nr. O.-No. | Beschreibung Description     | Gerätetyp Device type | V.-Nr. C.-No. |
|------------|---------------|------------------------------|-----------------------|---------------|
| 1          | 346137        | Mikroschalter<br>Microswitch | Office                | 10275         |
| 2          | 346139        | Mikroschalter<br>Microswitch | Office                | 10151         |

## Einbaumaß Ø25mm/Socket dimensions Ø25mm



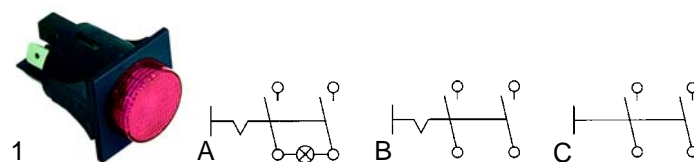
| Abb. Pict. | B.-Nr. O.-No. | Beschreibung Description                                   | Gerätetyp Device type  | V.-Nr. C.-No. |
|------------|---------------|--|--|---------------|
| 1A         | 345152        | Schalter, 2-pol, beleuchtet<br>Switch, 2 poles, lighted    | 100/105/200/205<br>Portofino, Firenze,<br>Capuccino, Century,<br>America | 01975         |
| 1B         | 345151        | Taster, 2-pol, beleuchtet<br>Push button, 2 poles, lighted | Capuccino<br>Belle Epoque 1/2Gr  | 01976         |



| Abb. Pict. | B.-Nr. O.-No. | Beschreibung Description                                   | Gerätetyp Device type        | V.-Nr. C.-No. |
|------------|---------------|--|------------------------------|---------------|
| 1A         | 345160        | Schalter, 2-pol, beleuchtet<br>Switch, 2 poles, lighted    | Club,<br>Belle Epoque junior | 00663         |
| 1B         | 346002        | Taster, 2-pol, unbeleuchtet<br>Push button, 2 poles, unlit | Club,<br>Belle Epoque 1/2Gr. | 00661         |
| 1C         | 346003        | Taster, 1-pol., + Lampe<br>Push button, 1 poles, + lamp    | Club                         | 00660         |

## Schalter/Switches

Einbaumaß Ø25mm/Socket dimensions Ø25mm

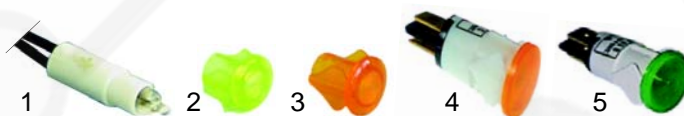


| Abb. Pict. | B.-Nr. O.-No. | Beschreibung Description                                | Gerätetyp Device type | V.-Nr. C.-No. |
|------------|---------------|---|-----------------------|---------------|
| 1A         | 345153        | Schalter, 2-pol, beleuchtet<br>Switch, 2 poles, lighted | Lady                  | 00664         |
| 1B         | 345155        | Schalter, 2-pol, unbeleuchtet<br>Switch, 2 poles, unlit | Lady                  | 00745         |
| 1C         | 345154        | Taster, 2-polig<br>Push-button, 2 poles                 | Lady                  | 00662         |



| Abb. Pict. | B.-Nr. O.-No. | Beschreibung Description                            | Gerätetyp Device type | V.-Nr. C.-No. |
|------------|---------------|---|-----------------------|---------------|
| 1          | 346046        | Schalter (Dampf)<br>Switch (steam)                  | Minipods              | 07547         |
| 2          | 301076        | Schalter (Elektrosymbol)<br>Switch (eklectrosymbol) | Minipods              | 07545         |
| 3          | 346049        | Schalter (Kaffee)<br>Switch (coffee)                | Minipods              | 06534         |

## Lampen/Lamps



| Abb. Pict. | B.-Nr. O.-No. | Beschreibung Description                       | Gerätetyp Device type | V.-Nr. C.-No. |
|------------|---------------|--|-----------------------|---------------|
| 1          | 359411        | Signalelement, 230V<br>Signal element, 230V    | Belle Epoque 1/2Gr    | 00668         |
| 2          | 359412        | Einsteckfassung (grün)<br>Lamp socket (green)  | Belle Epoque 1/2Gr    | 02628         |
| 3          | 359414        | Einsteckfassung (gelb)<br>Lamp socket (yellow) | Belle Epoque 1/2Gr    | 02627         |
| 4          | 359143        | Lampe/gelb, 230V<br>Lamp/yellow, 230V          |                       |               |
| 5          | 359142        | Lampe/grün, 230V<br>Lamp/green, 230V           |                       |               |



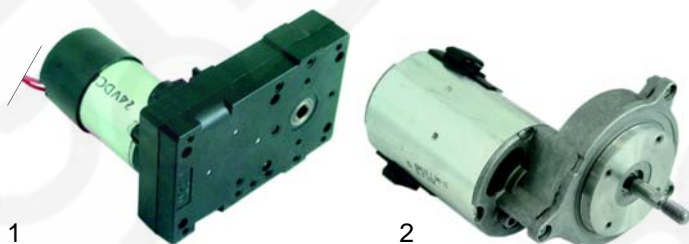
Passend für/Suitable for Brasilia

## 1 Transformator, Elektromagnet/ Transformer, electronic magnet



| Abb. Pict. | B.-Nr. O.-No. | Beschreibung Description                                       | Gerätet. Device t. | V.-Nr. C.-No. |
|------------|---------------|--|--------------------|---------------|
| 1          | 400560        | Transformator, 230V/24V, 150VA<br>Transformer, 230V/24V, 150VA | Office             | 12205         |
| 2          | 370170        | Magnet   | Office             | 11065         |

## Getriebemotoren/Gear motors



| Abb. Pict. | B.-Nr. O.-No. | Beschreibung Description                    | Gerätet. Device t. | V.-Nr. C.-No. |
|------------|---------------|---|--------------------|---------------|
| 1          | 500235        | 9RPM, 24VDC                                 | Office             | 10155         |
| 2          | 500236        | Kaffeemühle, 24VDC<br>Coffee grinder, 24VDC |                    |               |

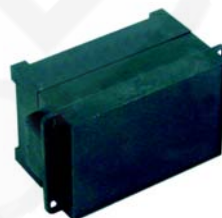
## Niveauregler/Level controller



| Abb. Pict. | B.-Nr. O.-No. | Beschreibung Description                           | Gerätetyp Device type                      | V.-Nr. C.-No. |
|------------|---------------|--|--|---------------|
| 1          | 400028        | Niveauregler, 8-polig<br>Level controller, 8 poles | 100/105, Century, Firenze,                 | 01871         |
| 2          | 380137        | Sockel, 8-polig<br>Base, 8 poles                   | Gradisca, Portofino, America, Capuccino    | 01810         |
| 3          | 400310        | Niveauregler<br>Level controller                   | Capuccino, Lady, Club, Belle Epoque Junior | 01878         |



| Abb. Pict. | B.-Nr. O.-No. | Beschreibung Description                             | Gerätetyp Device type | V.-Nr. C.-No. |
|------------|---------------|--|-----------------------|---------------|
| 1          | 400029        | Niveauregler, 11-polig<br>Level controller, 11 poles |                       | 02259         |
| 2          | 380136        | Sockel, 11-polig<br>Base, 11 poles                   |                       | 01920         |
| 3          | 400020        | Niveausonde, 150mm<br>Level probe, 150mm             |                       | 00649         |

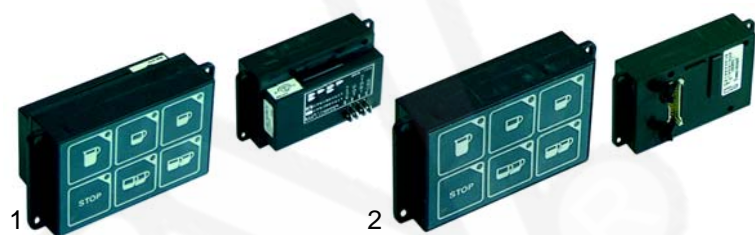


| Pos. Item | B.-Nr. O.-No. | Beschreibung Description         | Gerätetyp Device type | V.-Nr. C.-No. |
|-----------|---------------|----------------------------------|-----------------------|---------------|
| 1         | 400264        | Niveauregler<br>Level controller |                       | 09522         |
| 2         | 400564        | Niveauregler<br>Level controller | Office                | 10570         |



| Abb. Pict. | Bestell-Nr. Order-No. | Beschreibung Description      | Gerätetyp Device type | V.-Nr. C.-No. |
|------------|-----------------------|-------------------------------|-----------------------|---------------|
| 1          | 400347                | Tastatur<br>Keyboard          |                       | 01812         |
| 2          | 400092                | Tastensatz<br>Push button set |                       | 01493         |
| 3          | 400348                | Rahmen<br>Frame               |                       | 01494         |

## Tastaturen/Keyboards



| Abb. Pict. | B.-Nr. O.-No. | Beschreib. Descript.          | Pass. Zentraleinh. Suit. elect. box | Gerätetyp Device type | V.-Nr. C.-No. |
|------------|---------------|-------------------------------|-------------------------------------|-----------------------|---------------|
| 1          | 400039        | 1 Gruppe<br>1 group           | 400037                              | Century-2/96          | 04962         |
| 2          | 400038        | 2 - 4 Gruppen<br>2 - 4 groups | 400035 (2 Gr)<br>400284 (3Gr)       | Century-2/96          | 04961         |

## Tastaturen/Zentraleinheiten ab 2/96 (Gicar Flowmeter)/ Keyboards/Electronic boxes since 2/96 (Gicar flowmeter)



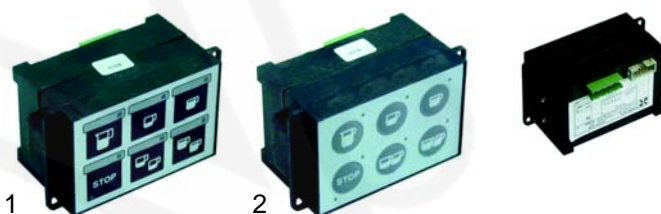
| Abb. Pict. | Bestell-Nr. Order-No. | Beschreibung Description | Gerätetyp Device type | V.-Nr. C.-No. |
|------------|-----------------------|--------------------------|-----------------------|---------------|
| 1          | 400285                | 1Gr/230V                 | Firenze               | 08497         |
| 2          | 400294                | 1Gr/230V                 | Gradisca, Mytos       | 08498         |

## Tastaturen/Zentraleinheiten bis 2/96 (Cubic Flowmeter)/ Keyboards/Electronic boxes till 2/96 (Cubic flowmeter)



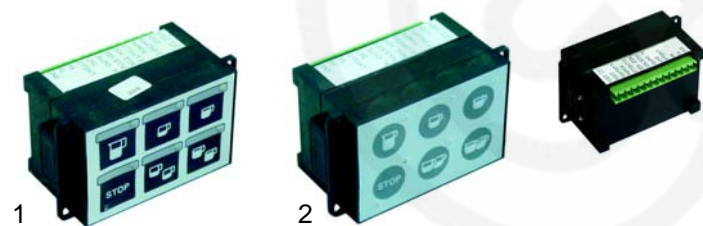
| Abb. Pict. | Bestell-Nr. Order-No. | Beschreibung Description | Gerätetyp Device type | V.-Nr. C.-No. |
|------------|-----------------------|--------------------------|-----------------------|---------------|
| 1          | 400286                | 1Gr/230V                 | Capuccino             | 05475         |
| 2          | 400287                | 1Gr/230V                 | Portofino, America    | 06556         |

## Tastaturen/Zentraleinheiten ab 2/96 (Gicar Flowmeter)/ Keyboards/Electronic boxes since 2/96 (Gicar flowmeter)

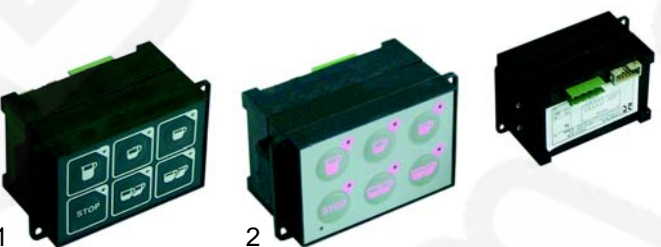


| Abb. Pict. | B.-Nr. O.-No. | Beschreib. Descript. | Pass. Zent. Suit. el. box | Gerätetyp Device type | V.-Nr. C.-No. |
|------------|---------------|----------------------|---------------------------|-----------------------|---------------|
| 1          | 400296        | 2 - 4Gr              | 400266 (2Gr)              | 100, 200              | 10137         |
| 2          | 400271        | 2 - 4Gr              | 400267 (3Gr)              | 105, 205              | 10138         |

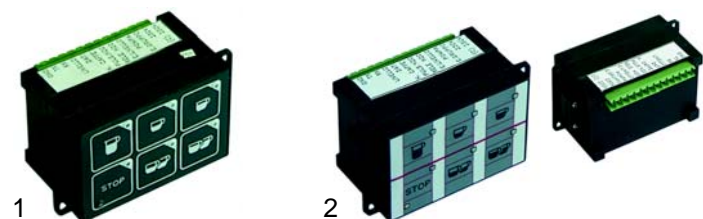
## Tastaturen/Zentraleinheiten ab 2/96 (Gicar Flowmeter)/ Keyboards/Electronic boxes since 2/96 (Gicar flowmeter)



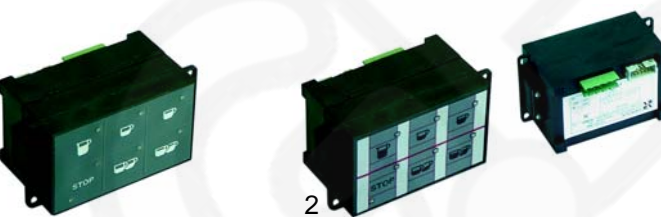
| Abb. Pict. | Bestell-Nr. Order-No. | Beschreibung Description | Gerätetyp Device type | V.-Nr. C.-No. |
|------------|-----------------------|--------------------------|-----------------------|---------------|
| 1          | 400395                | 1Gr/230V                 | 100                   | 08495         |
| 2          | 400396                | 1Gr/230V                 | 105                   | 08496         |



| Abb. Pict. | B.-Nr. O.-No. | Beschreib. Descript. | Pass. Zent. Suit. el. box | Gerätetyp Device type | V.-Nr. C.-No. |
|------------|---------------|----------------------|---------------------------|-----------------------|---------------|
| 1          | 400288        | 2 - 4Gr              | 400266 (2Gr)              | Century 11/98         | 10135         |
| 2          | 400262        | 2 - 4Gr              | 400267 (3Gr)              | Firenze 3/00          | 10139         |



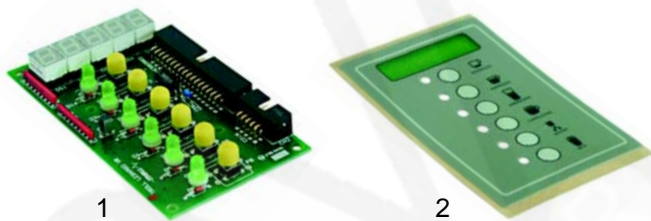
| Abb. Pict. | Bestell-Nr. Order-No. | Beschreibung Description | Gerätetyp Device type | V.-Nr. C.-No. |
|------------|-----------------------|--------------------------|-----------------------|---------------|
| 1          | 400292                | 1Gr/230V                 | Capuccino, Century    | 08493         |
| 2          | 400346                | 1Gr/230V                 | Portofino, America    | 08494         |



| Abb. Pict. | B.-Nr. O.-No. | Beschreib. Descript. | Pass. Zent. Suit. el. box | Gerätetyp Device type | V.-Nr. C.-No. |
|------------|---------------|----------------------|---------------------------|-----------------------|---------------|
| 1          | 400291        | 2 - 4Gr              | 400266 (2Gr)              | Gradisca 11/98        | 10136         |
| 2          | 400289        | 2 - 4Gr              | 400267 (3Gr)              | Portofino 11/98       | 09954         |



## Tastaturen/Keyboards



| Abb. Pict. | Best.-Nr. Ord.-No. | Beschreibung Description | Gerätetyp Device type | V.-Nr. C.-No. |
|------------|--------------------|--------------------------|-----------------------|---------------|
| 1          | 400561             | Tastatur<br>Keyboard     | Office                | 10168         |
| 2          | 400562             | Folie<br>Foil            | Office                | 10501         |

## Zentraleinheiten/Electronic boxes

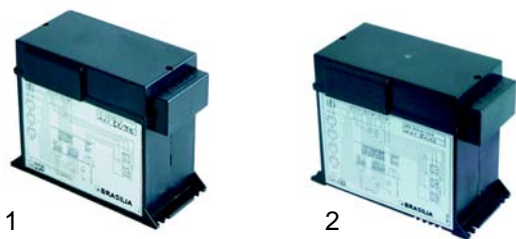


| Pos. Item | Best.-Nr. Ord.-No. | Beschreibung Description                                | Gerätetyp Device type | V.-Nr. C.-No.  |
|-----------|--------------------|---|-----------------------|----------------|
| 1         | 400563             | Platine mit Mikroprozessor<br>Board with Microprocessor | Office                | 10167<br>10170 |

## Zentraleinheiten (Cubic Flowmeter)/ Electronic boxes (Cubic flowmeter)

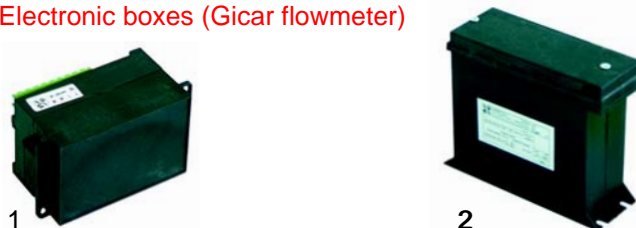


| Abb. Pict. | Best.-Nr. Ord.-No. | Beschreibung Description | Gerätetyp Device type                                | V.-Nr. C.-No. |
|------------|--------------------|--------------------------|--|---------------|
| 1          | 400037             | 1Gr/230V                 | Portofino - 2/96<br>Century - 2/96<br>Belle Epoque   | 01805         |
| 2          | 400035             | 2Gr/230V                 | 100, 105 - 2/96                                      | 04964         |
| 2          | 400284             | 3Gr/230V                 | Century, Firenze - 2/96<br>America, Portofino - 2/96 | 04965         |

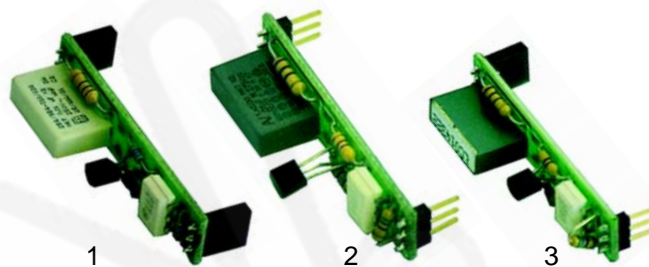


| Abb. Pict. | Best.-Nr. Ord.-No. | Beschreibung Description | Gerätetyp Device type | V.-Nr. C.-No. |
|------------|--------------------|--------------------------|-----------------------|---------------|
| 1          | 400036             | 2Gr/230V                 |                       | 01806         |
| 2          | 400283             | 3Gr/230V                 |                       | 01807         |

## Zentraleinheiten (Gicar Flowmeter)/ Electronic boxes (Gicar flowmeter)



| Abb. Pict. | Best.-Nr. Ord.-No. | Beschreibung Description | Gerätetyp Device type                                 | V.-Nr. C.-No. |
|------------|--------------------|--------------------------|---|---------------|
| 1          | 400265             | 1Gr/230V                 | Century, Gradica,<br>Portofino                        | 09948         |
| 2          | 400266             | 2Gr/230V                 | 100, 105, 200, 205 -11/98                             | 09950         |
| 2          | 400267             | 3Gr/230V                 | Century, Firenze -11/98<br>Gradisca, Portofino -11/98 | 09952         |



| Abb. Pict. | B.-Nr. O.-No. | Beschreibung Description                                   | Gerätetyp Device type | V.-Nr. C.-No. |
|------------|---------------|--|-----------------------|---------------|
| 1          | 400268        | 1 Serie, Steckhülse<br>1 serie, barrel socket              |                       | 10438         |
| 2          | 400269        | 2 Serie, Stecker<br>2 serie, plug                          |                       | 11738         |
| 3          | 400270        | 3 Serie, Steckhülse/Stecker<br>3 Serie, barrel socket/plug |                       | 11739         |

## Flowmeter (Cubic)/Flowmeter (Cubic)



| Abb. Pict. | Bestell.-Nr. Order-No. | Beschreibung Description            | Gerätetyp Device type | V.-Nr. C.-No. |
|------------|------------------------|-------------------------------------|-----------------------|---------------|
| 1          | 400254                 | Flowmeter                           |                       | 01217         |
| 2          | 400199                 | Fotozelleneinheit<br>Photocell unit |                       | 07627         |
| 3          | 400349                 | Lüftereinheit<br>Ventilator unit    |                       | 01804         |
| 4          | 400565                 | Flowmeter                           | Office                | 10264         |

## Flowmeter (Gicar)/Flowmeter (Gicar)



| Abb. Pict. | Bestell.-Nr. Order-No. | Beschreibung Description           | Gerätetyp Device type | V.-Nr. C.-No. |
|------------|------------------------|------------------------------------|-----------------------|---------------|
| 1          | 400255                 | Flowmeter, 1/8"<br>Flowmeter, 1/8" |                       | 08729         |
| 2          | 400256                 | Stecker<br>Plugs                   |                       | 09013         |
| 3          | 400257                 | Zählrad<br>Flowmeter reel          |                       |               |
| 4          | 400258                 | Gehäusedichtung<br>Case gasket     |                       |               |

## Heizkörper/Heaters

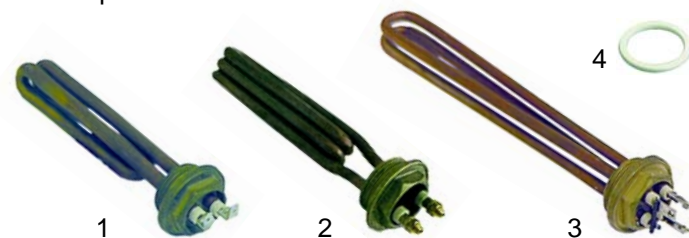


| Abb. Pict. | B.-Nr. O.-No. | Beschreibung Description                                    | Gerätetyp Device type | V.-Nr. C.-No. |
|------------|---------------|---|-----------------------|---------------|
| 1          | 417030        | 1 Gruppe, 1800W, 230V<br>1 group, 1800W, 230V               | ABRA                  | 00614         |
| 1          | 417170        | 1 Gruppe, 2000W, 230V, 400V<br>1 group, 2000W, 230V, 400V   |                       | 08159         |
| 2          | 417031        | 2 Gruppen, 3000W, 230V<br>2 groups, 3000W, 230V             |                       | 00615         |
| 2          | 417171        | 2 Gruppen, 3500W, 230V<br>2 groups, 3500W, 230V             |                       | 01834         |
| 3          | 417096        | 3 Gruppen, 4000W, 230V<br>3 groups, 4000W, 230V             |                       | 00616         |
| 3          | 417172        | 3 Gruppen, 5500W, 230V, 400V<br>3 groups, 5500W, 230V, 400V |                       | 05391         |
| 4          | 528006        | Dichtung<br>Gasket  |                       | 00819         |



| Abb. Pict. | Bestell-Nr. Order-No. | Beschreibung Description                      | Gerätetyp Device type | V.-Nr. C.-No. |
|------------|-----------------------|---|-----------------------|---------------|
| 1          | 417033                | 2 Gruppen, 3200W-230V<br>2 groups, 3200W-230V | Mythos                | 04995         |
| 2          | 417086                | 3 Gruppen, 4200W-230V<br>3 groups, 4200W-230V | Mythos                | 04996         |
| 3          | 417034                | 1 Gruppe, 1400W-230V<br>1 group, 1400W-230V   | Capuccino             | 05430         |
| 4          | 528230                | Dichtung, O-Ring<br>Gasket, O-ring            |                       | 01368         |

## Heizkörper/Heaters



| Abb. Pict. | B.-Nr. O.-No. | Beschreibung Description                                   | Gerätetyp Device type          | V.-Nr. C.-No. |
|------------|---------------|--|--------------------------------|---------------|
| 1          | 417081        | 1 Gruppe/1", 1350W, 230V<br>1 group/1", 1350W, 230V        | Capuccino                      | 01911         |
| 2          | 417032        | 1 Gruppe, 1/4", 2000W, 230V<br>1 group, 1/4", 2000W, 230V  | America plus                   | 00613         |
| 2          | 417173        | 1 Gruppe, 1/4", 1700W, 230V<br>1 group, 1/4", 1700W, 230V  | Belle Epoque                   |               |
| 2          | 417196        | 2 Gruppe, 1/4", 2400W, 230V<br>2 groups, 1/4", 2400W, 230V |                                | 00627         |
| 3          | 417080        | 2 Gruppe, 1/4", 2500W, 230V<br>2 groups, 1/4", 2500W, 230V | America super,<br>Belle Epoque | 01378         |
| 4          | 528018        | Dichtung, 1"<br>Gasket, 1"                                 |                                | 00826         |
| 4          | 528021        | Dichtung, 1/4"<br>Gasket, 1/4"                             |                                | 02286         |



| Abb. Pict. | Bestell-Nr. Order-No. | Beschreibung Description    | Gerätetyp Device type | V.-Nr. C.-No. |
|------------|-----------------------|-----------------------------|-----------------------|---------------|
| 1          | 417035                | 1200W-230V                  | Office                | 00625         |
| 2          | 417189                | 1800W/230V                  | Cappuccino            | 10246         |
| 3          | 528231                | O-Ring<br>O-ring            | Club/Lady,            | 00839         |
| 4          | 528232                | O-Ring/Kessel<br>O-ring/pot | Belle Epoque Junior   | 00843         |

## Kesseldichtungen/Pot gaskets



| Abb. Pict. | Bestell-Nr. Order-No. | Beschreibung Description | Gerätetyp Device type | V.-Nr. C.-No. |
|------------|-----------------------|--------------------------|-----------------------|---------------|
| 1          | 528140                | 108 x 101 x 2mm          | Mythos                | 04392         |
| 2          | 528139                | 142 x 128 x 4mm          | Century               | 00821         |
| 3          | 528232                | Ø2,62 x 71,12mm          | Capuccino             | 06321         |



## Manometer/Manometer



| Abb. Pict. | Bestell-Nr. Order-No. | Beschreibung Description    | Gerätetyp Device type          | V.-Nr. C.-No. |
|------------|-----------------------|-----------------------------|--------------------------------|---------------|
| 1          | 541267                | Doppelskala<br>Double scale | 100, 105, 200, 205<br>Millenio | 05466         |
| 2          | 541268                | 0 - 2,5bar                  | Capuccino                      | 05469         |
| 3          | 541269                | Doppelskala<br>Double scale | Century                        | 04971         |

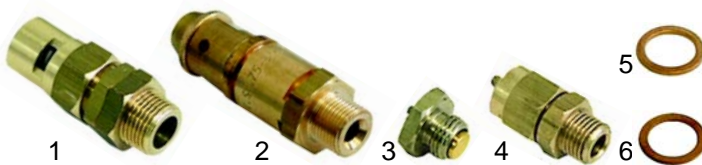


| Abb. Pict. | Bestell-Nr. Order-No. | Beschreibung Description    | Gerätetyp Device type     | V.-Nr. C.-No. |
|------------|-----------------------|-----------------------------|---------------------------|---------------|
| 1          | 541273                | Doppelskala<br>double scale | Firenze                   | 06622         |
| 2          | 541256                | Doppelskala<br>double scale | Gradisca, Bar,<br>Century | 00737         |
| 3          | 541257                | Doppelskala<br>double scale | Portofino, America        | 06555         |

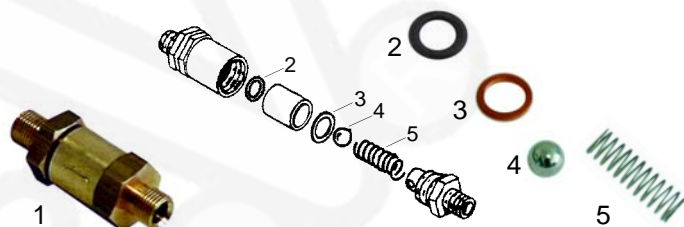


| Pos. Item | Bestell-Nr. Order-No. | Beschreibung Description | Gerätetyp Device type | V.-Nr. C.-No. |
|-----------|-----------------------|--------------------------|-----------------------|---------------|
| 1         | 541270                |                          | Belle Epoque          | 01880         |

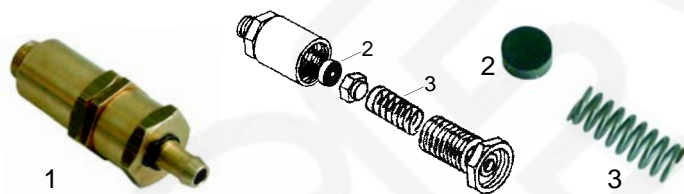
## Ventile/Valves



| Abb. Pict. | B.-Nr. O.-No. | Beschreibung Description  | Gerätetyp Device type | V.-Nr. C.-No. |
|------------|---------------|---|-----------------------|---------------|
| 1          | 529312        | Sicherheitsventil, 1,8bar, 3/8"<br>Safety valve, 1,8bar, 3/8"                 |                       | 01120         |
| 2          | 529338        | Sicherheitsventil/plombiert, 1,5bar, 3/8"<br>Safety valve/sealt, 1,5bar, 3/8" |                       | 01181         |
| 3          | 529303        | Entlüftungsventil, 1/4"<br>Empty valve, 1/4"                                  |                       | 05062         |
| 4          | 529304        | Entlüftungsventil, 1/4"<br>Empty valve, 1/4"                                  |                       | 01571         |
| 5          | 529361        | Cu-Dichtung, 1/4"<br>Cu-gasket, 1/4"  |                       | 00813         |
| 6          | 529349        | Cu-Dichtung, 3/8"<br>Cu-gasket, 3/8"  |                       | 01386         |



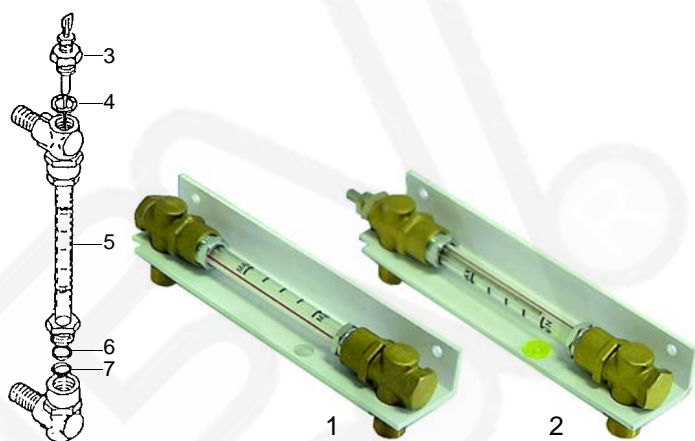
| Abb. Pict. | Best.-Nr. Ord.-No. | Beschreibung Description                                   | Gerätetyp Device type | V.-Nr. C.-No. |
|------------|--------------------|--|-----------------------|---------------|
| 1          | 529311             | Rückschlagventil/kpl., 1/8"<br>Non-return valve/kpl., 1/8" |                       | 01119         |
| 2          | 371095             | O-Ring<br>O-ring   |                       | 00833         |
| 3          | 528233             | Cu-Dichtung<br>Cu-gasket                                   |                       | 01404         |
| 4          | 528234             | Kugel<br>Ball  |                       | 02227         |
| 5          | 528235             | Feder<br>Spring  |                       | 00863         |



| Abb. Pict. | Best.-Nr. Ord.-No. | Beschreibung Description                          | Gerätetyp Device type | V.-Nr. C.-No. |
|------------|--------------------|---|-----------------------|---------------|
| 1          | 529593             | Expansionsventil/kpl.<br>Expansion valve/assembly |                       | 01182         |
| 2          | 528236             | Dichtung, 11 x 3mm<br>Gasket, 11 x 3mm            |                       | 01365         |
| 3          | 528237             | Feder<br>Spring                                   |                       | 00884         |

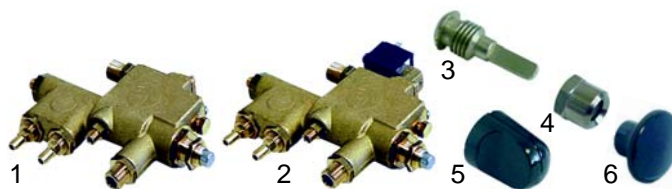


## Wasserstandsgläser/Level glasses



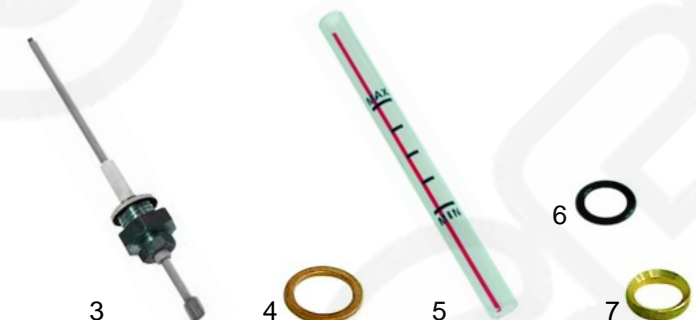
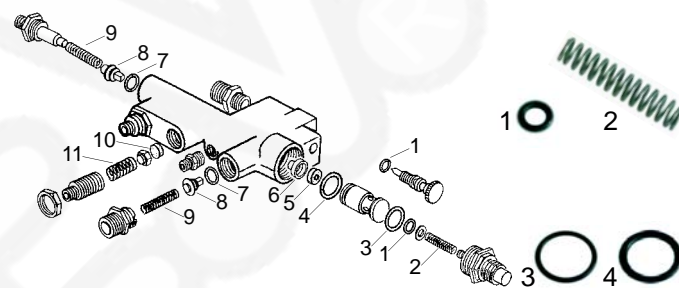
| Abb. Pict. | Bestell-Nr. Order-No. | Beschreibung Description                          | Gerätetyp Device type | V.-Nr. C.-No. |
|------------|-----------------------|---|-----------------------|---------------|
| 1          | 529402                | kpl. ohne Niveausonde<br>cpl. without level probe |                       | 01110         |
| 2          | 529403                | kpl. mit Niveausonde<br>cpl. with level probe     |                       | 01211         |

## Wasserfüllventil/Water intake valve



| Abb. Pict. | Best.-Nr. Ord.-No. | Beschreibung Description  | Gerätetyp Device type | V.-Nr. C.-No. |
|------------|--------------------|---|-----------------------|---------------|
| 1          | 529591             | Füllhahn, kpl.<br>Water intake tab, cpl.                          |                       | 02953         |
| 2          | 529590             | Füllhahn mit Magnetventil<br>Water intake tab with Solenoid valve |                       | 02954         |
| 3          | 528238             | Druckwelle<br>Thrust shaft  |                       | 00144         |
| 4          | 528239             | Mutter<br>Nut   |                       | 00145         |
| 5          | 111100             | Knebel<br>Knob  |                       | 00772         |
| 6          | 111101             | Knopf<br>Push button  |                       | 00781         |

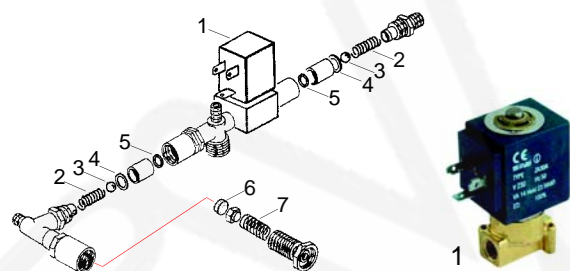
## Ventile/Valves



| Abb. Pict. | Bestell-Nr. Order-No. | Beschreibung Description                 | Gerätetyp Device type | V.-Nr. C.-No. |
|------------|-----------------------|--|-----------------------|---------------|
| 3          | 400020                | Niveausonde, 140mm<br>Level probe, 140mm |                       | 00649         |
| 4          | 529361                | Cu-Dichtung, 1/4"<br>Cu-gasket, 1/4"     |                       | 00813         |
| 5          | 529398                | Wasserstandsglas<br>Level glass          |                       | 00787         |
| 6          | 528211                | O-Ring<br>O-ring                         |                       | 00838         |
| 7          | 529396                | Press Scheibe<br>Press washer            |                       | 00088         |

| Abb. Pict. | Bestell-Nr. Order-No. | Beschreibung Description        | Gerätetyp Device type | Vergl.-Nr. Comp.-No. |
|------------|-----------------------|---------------------------------|-----------------------|----------------------|
| 1          | 528240                | O-Ring<br>O-ring                |                       | 01428                |
| 2          | 528241                | Feder<br>Spring                 |                       | 02218                |
| 3          | 528242                | O-Ring<br>O-ring                |                       | 01389                |
| 4          | 528243                | O-Ring<br>O-ring                |                       | 02107                |
| 5          | 528244                | Dichtung<br>Gasket              |                       | 00818                |
| 6          | 528245                | Dichtungsträger<br>Gasketholder |                       | 00153                |
| 7          | 528246                | O-Ring<br>O-ring                |                       | 00836                |
| 8          | 528247                | Ventil<br>Valve                 |                       | 05595                |
| 9          | 528248                | Feder<br>Spring                 |                       | 00870                |
| 10         | 528236                | Dichtung<br>Gasket              |                       | 01365                |
| 11         | 528237                | Feder<br>Spring                 |                       | 00884                |

## Wasserfüllventile/Water intake valves

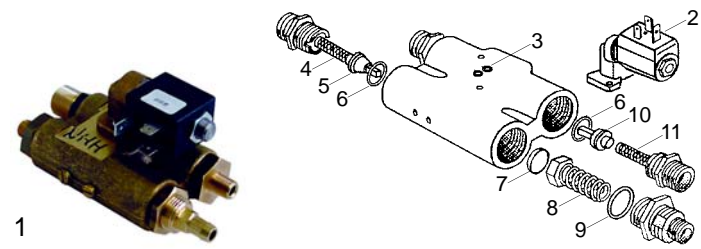


| Abb. Pict. | Bestell-Nr. Order-No. | Beschreibung Description       | Gerätetyp Device type | Vergl.-Nr. Comp.-No. |
|------------|-----------------------|--------------------------------|-----------------------|----------------------|
| 1          | 370082                | Magnetventil<br>Solenoid valve |                       | 02269                |

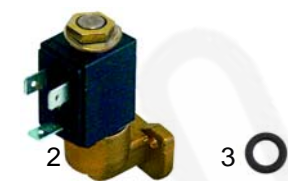


|   |        |                                  |  |       |
|---|--------|----------------------------------|--|-------|
| 2 | 528235 | Feder<br>Spring                  |  | 00863 |
| 3 | 528234 | Kugel<br>Ball                    |  | 02227 |
| 4 | 528233 | Cu-Dichtung<br>Cu-Gasket         |  | 01404 |
| 5 | 371095 | O-Ring (Viton)<br>O-Ring (viton) |  | 00833 |
| 6 | 528236 | Dichtung<br>Gasket               |  | 01365 |
| 7 | 528237 | Feder<br>Spring                  |  | 00884 |

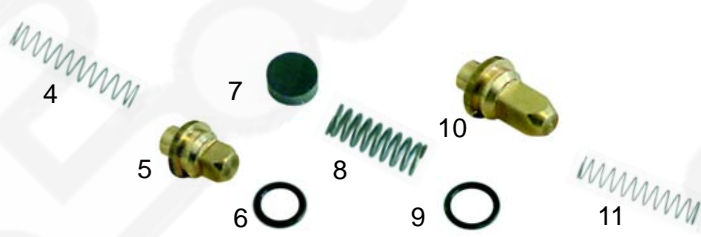
## Wasserfüllventile/Water intake valves



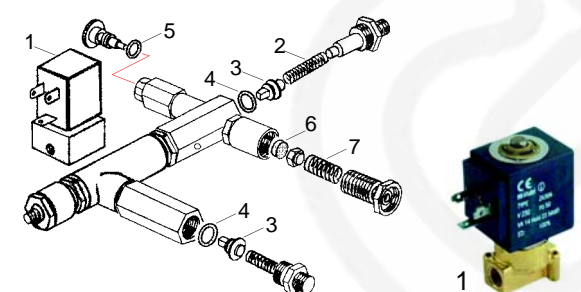
| Abb. Pict. | Bestell-Nr. Order-No. | Beschreibung Description                             | Gerätetyp Device type | V.-Nr. C.-No. |
|------------|-----------------------|--|-----------------------|---------------|
| 1          | 529615                | Füllventil/kpl., 230VAC<br>Intake valve/cpl., 230VAC |                       | 06267         |



| Abb. Pict. | Bestell-Nr. Order-No. | Beschreibung Description                       | Gerätetyp Device type | V.-Nr. C.-No. |
|------------|-----------------------|--|-----------------------|---------------|
| 2          | 370095                | Magnetventil, 230VAC<br>Solenoid valve, 230VAC |                       | 09436         |
| 3          | 371095                | O-Ring<br>O-ring                               |                       | 00833         |



|    |        |                    |  |       |
|----|--------|--------------------|--|-------|
| 4  | 528249 | Feder<br>Spring    |  | 05538 |
| 5  | 528247 | Ventil<br>Valve    |  | 00078 |
| 6  | 528250 | O-Ring<br>O-ring   |  | 00847 |
| 7  | 528236 | Dichtung<br>Gasket |  | 01365 |
| 8  | 528237 | Feder<br>Spring    |  | 00884 |
| 9  | 528251 | O-Ring<br>O-ring   |  | 00840 |
| 10 | 528252 | Ventil<br>Valve    |  | 05595 |
| 11 | 528248 | Feder<br>Spring    |  | 00870 |



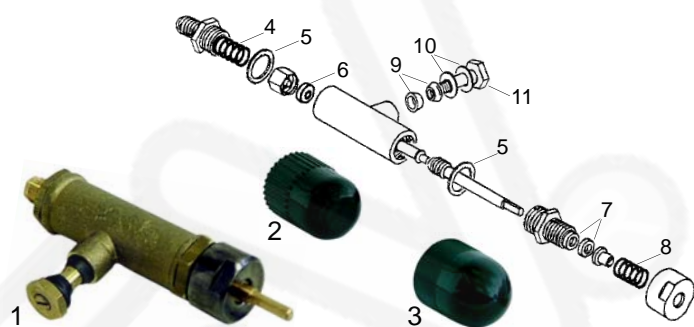
| Abb. Pict. | Bestell-Nr. Order-No. | Beschreibung Description       | Gerätetyp Device type | Vergl.-Nr. Comp.-No. |
|------------|-----------------------|--------------------------------|-----------------------|----------------------|
| 1          | 370082                | Magnetventil<br>Solenoid valve |                       | 02269                |



|   |        |                                  |  |       |
|---|--------|----------------------------------|--|-------|
| 2 | 528248 | Feder<br>Spring                  |  | 00870 |
| 3 | 528247 | Ventil<br>Valve                  |  | 00078 |
| 4 | 528246 | O-Ring<br>O-Ring                 |  | 00836 |
| 5 | 528240 | O-Ring (Viton)<br>O-Ring (viton) |  | 01428 |
| 6 | 528236 | Dichtung<br>Gasket               |  | 01365 |
| 7 | 528237 | Feder<br>Spring                  |  | 00884 |



## Hähne/Taps



| Abb. Pict. | Bestell-Nr. Order-No. | Beschreibung Description                       | Gerätetyp Device type | V.-Nr. C.-No. |
|------------|-----------------------|--|-----------------------|---------------|
| 1          | 529594                | Dampf/Wasserhahn, kpl.<br>Steam/Watertap, kpl. | BAR                   | 01169         |
| 2          | 111071                | Knebel<br>Knob                                 | Century               | 04402         |
| 3          | 111070                | Knebel<br>Knob                                 | BAR                   | 00770         |



| Abb. Pict. | Best.-Nr. Ord.-No. | Beschreibung Description                               | Gerätetyp Device type | V.-Nr. C.-No. |
|------------|--------------------|--|-----------------------|---------------|
| 4          | 528253             | Feder<br>Spring  |                       | 00866         |
| 5          | 528254             | Dichtung<br>Gasket                                     |                       | 00109         |
| 6          | 528255             | Dichtung, 13 x 4 x 4mm<br>Gasket, 13 x 4 x 4mm         |                       |               |
| 7          | 528256             | Dichtung, 15,5 x 7,5 x 4mm<br>Gasket, 15,5 x 7,5 x 4mm |                       |               |
| 8          | 528257             | Feder<br>Spring  |                       |               |
| 9          | 528258             | Dichtung<br>Gasket                                     |                       | 00810         |
| 10         | 528259             | Scheibe<br>Washer                                      |                       | 01286         |
| 11         | 528260             | Schraube<br>Screw                                      |                       | 00107         |

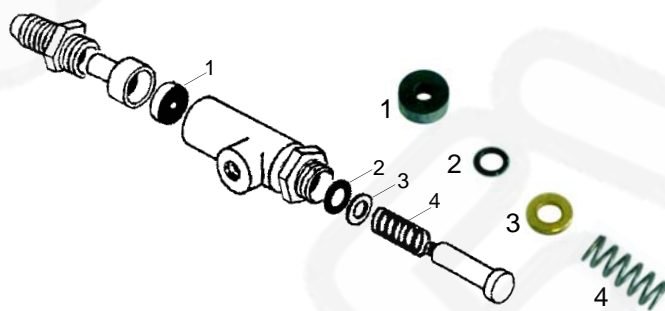
## Hähne/Taps



| Abb. Pict. | Bestell-Nr. Order-No. | Beschreibung Description                       | Gerätetyp Device type | V.-Nr. C.-No. |
|------------|-----------------------|--|-----------------------|---------------|
| 1          | 529595                | Dampf/Wasserhahn, kpl.<br>Steam/Watertap, kpl. |                       | 01153         |
| 2          | 528261                | Knebelwelle<br>Knob shaft                      |                       | 02088         |
| 3          | 528263                | Überwurfmutter<br>Union nut                    |                       | 00145         |
| 4          | 111070                | Knebel (Belle Epoque)<br>Knob (Belle Epoque)   |                       | 00770         |



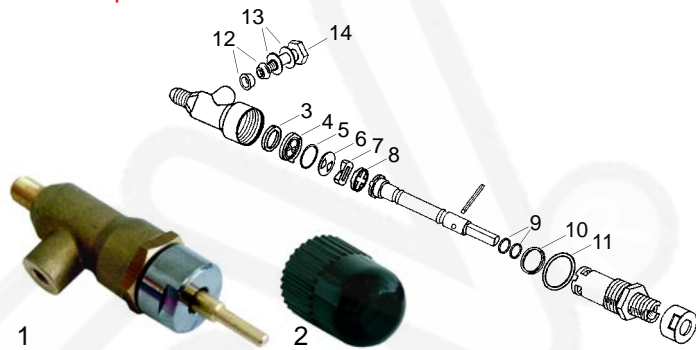
|    |        |                                    |  |       |
|----|--------|------------------------------------|--|-------|
| 5  | 528262 | Knebelwelle<br>Knob shaft          |  | 02086 |
| 6  | 528264 | Überwurfmutter<br>Union nut        |  | 05363 |
| 7  | 111071 | Knebel<br>Knob                     |  | 04402 |
| 8  | 528265 | Knebelwelle<br>Knob shaft          |  |       |
| 9  | 528266 | Überwurfmutter<br>Union nut        |  |       |
| 10 | 112009 | Knebel (America)<br>Knob (America) |  |       |



| Abb. Pict. | Bestell-Nr. Order-No. | Beschreibung Description         | Gerätetyp Device type | V.-Nr. C.-No. |
|------------|-----------------------|----------------------------------|-----------------------|---------------|
| 1          | 528244                | Dichtung<br>Gasket               |                       | 00818         |
| 2          | 528267                | O-Ring (Viton)<br>O-ring (Viton) |                       | 00831         |
| 3          | 528268                | Scheibe<br>Washer                |                       | 00166         |
| 4          | 528269                | Feder<br>Spring                  |                       | 00871         |

1 Passend für/Suitable for Brasilia

## Hähne/Taps



| Abb. Pict. | B.-Nr. O.-No. | Beschreibung Description  | Gerätet. Device t. | V.-Nr. C.-No. |
|------------|---------------|---|--------------------|---------------|
| 1          | 529617        | Dampf/Wasserhahn, kpl. (Keramik)<br>Steam/Watertap, kpl. (Ceramics) |                    | 05733         |
| 2          | 111071        | Knebel<br>Gasket  |                    | 04402         |

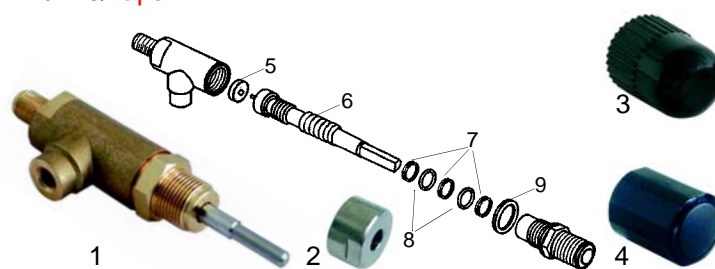


| Abb. Pict. | Bestell-Nr. Order-No. | Beschreibung Description           | Gerätetyp Device type | V.-Nr. C.-No. |
|------------|-----------------------|------------------------------------|-----------------------|---------------|
| 3          | 528270                | Dichtung<br>Gasket                 |                       | 05805         |
| 4          | 528271                | Scheibenträger<br>Washer holder    |                       | 05808         |
| 5          | 528273                | O-Ring (Viton)<br>O-ring (Viton)   |                       | 05806         |
| 6          | 528272                | Keramik Scheibe<br>Ceramics washer |                       | 05811         |
| 7          | 528274                | Keramik Scheibe<br>Ceramics washer |                       | 05810         |
| 8          | 528275                | Scheibenträger<br>Washer holder    |                       | 05807         |



| Abb. Pict. | Bestell-Nr. Order-No. | Beschreibung Description           | Gerätetyp Device type | V.-Nr. C.-No. |
|------------|-----------------------|------------------------------------|-----------------------|---------------|
| 9          | 528276                | O-Ring<br>O-ring                   |                       | 00833         |
| 10         | 528277                | Scheibe<br>Washer                  |                       | 05809         |
| 11         | 528278                | O-Ring<br>O-ring                   |                       | 05825         |
| 12         | 528258                | Dichtung/konisch<br>Gasket/conical |                       | 00810         |
| 13         | 528259                | Scheibe<br>Washer                  |                       | 01286         |
| 14         | 528260                | Schraube<br>Screw                  |                       | 00107         |

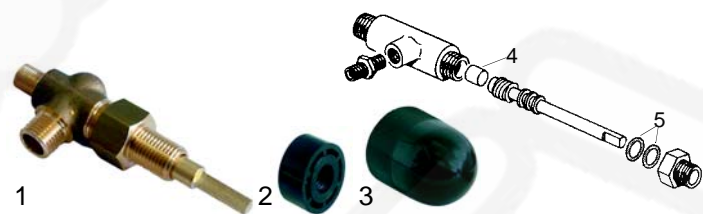
## Hähne/Taps



| Abb. Pict. | Bestell-Nr. Order-No. | Beschreibung Description                       | Gerätetyp Device type | Ver.-Nr. Com.-No. |
|------------|-----------------------|--|-----------------------|-------------------|
| 1          | 529616                | Dampf/Wasserhahn, kpl.<br>Steam/Watertap, kpl. |                       | 11927             |
| 2          | 528279                | Überwurfmutter<br>Union nut                    |                       | 00131             |
| 3          | 111071                | Knebel (Century)<br>Knob (Century)             | Century               | 04402             |
| 4          | 112013                | Knebel (Portofino)<br>Knob (Portofino)         | Portofino, Gradisca   | 06366             |



| Abb. Pict. | Bestell-Nr. Order-No. | Beschreibung Description | Gerätetyp Device type | Ver.-Nr. Com.-No. |
|------------|-----------------------|--------------------------|-----------------------|-------------------|
| 5          | 528283                | Dichtung<br>Gasket       |                       | 12005             |
| 6          | 528284                | Feder<br>Spring          |                       | 10962             |
| 7          | 528185                | Scheibe<br>Washer        |                       | 12153             |
| 8          | 528286                | O-Ring<br>O-ring         |                       | 06349             |
| 9          | 528287                | Dichtung<br>Gasket       |                       | 12152             |



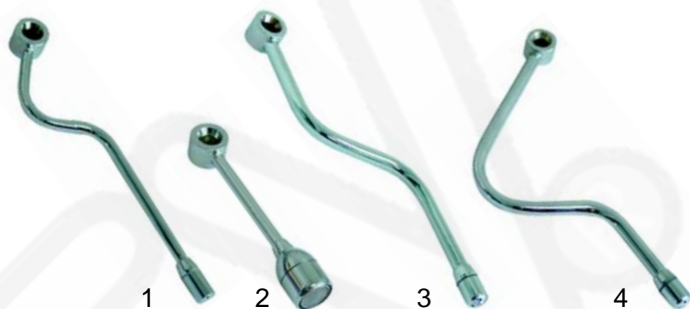
| Abb. Pict. | Bestell-Nr. Order-No. | Beschreibung Description                       | Gerätetyp Device type | Ver.-Nr. Com.-No. |
|------------|-----------------------|--|-----------------------|-------------------|
| 1          | 529618                | Dampf/Wasserhahn, kpl.<br>Steam/Watertap, kpl. | Club Lady             | 01103             |
| 2          | 528299                | Überwurfmutter<br>Union nut                    |                       | 00771             |
| 3          | 111070                | Knebel<br>Knob                                 |                       | 00770             |



| Abb. Pict. | Bestell-Nr. Order-No. | Beschreibung Description | Gerätetyp Device type | Ver.-Nr. Com.-No. |
|------------|-----------------------|--------------------------|-----------------------|-------------------|
| 4          | 528281                | Dichtung<br>Gasket       |                       | 00825             |
| 5          | 528282                | O-Ring<br>O-ring         |                       | 00835             |



## Dampfrohr (Augengelenk)/Steampipe (Single banjo body)

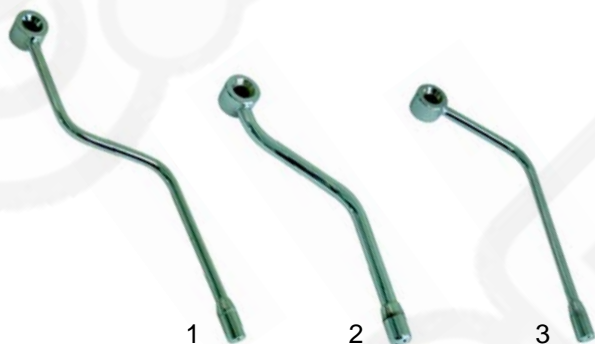


| Abb. Pict. | Bestell-Nr. Order-No. | Beschreibung Description | Gerätetyp Device type | V.-Nr. C.-No. |
|------------|-----------------------|--------------------------|-----------------------|---------------|
| 1          | 529752                |                          | 100, 105, Firenze     | 02534         |
| 2          | 529597                |                          | Capuccino             | 00259         |
| 3          | 529741                |                          | Century               | 04657         |
| 4          | 529753                |                          | Gradisca              | 04689         |

## Wasserrohr (Augengelenk)/Waterpipe (Single banjo body)



| Abb. Pict. | Bestell-Nr. Order-No. | Beschreibung Description | Gerätetyp Device type | Vergl.-Nr. Comp.-No. |
|------------|-----------------------|--------------------------|-----------------------|----------------------|
| 1          | 529597                |                          | BAR, Firenze          | 00259                |
| 2          | 529757                |                          | Gradisca              | 09745                |
| 3          | 529599                |                          | America               | 02550                |



| Abb. Pict. | Bestell-Nr. Order-No. | Beschreibung Description | Gerätetyp Device type         | V.-Nr. C.-No. |
|------------|-----------------------|--------------------------|-------------------------------|---------------|
| 1          | 529596                |                          | Portofino, BAR, America Super | 00260         |
| 2          | 529740                |                          | Century, America              | 04676         |
| 3          | 529754                |                          | Belle Epoque 1/2Gr            | 01599         |



| Abb. Pict. | Bestell-Nr. Order-No. | Beschreibung Description | Gerätetyp Device type | Vergl.-Nr. Comp.-No. |
|------------|-----------------------|--------------------------|-----------------------|----------------------|
| 1          | 529600                |                          | Maxi America          | 01630                |
| 2          | 529601                |                          | America Plus          | 02509                |

## Wasserrohr (Augengelenk)/Waterpipe (Single banjo body)



| Abb. Pict. | Bestell-Nr. Order-No. | Beschreibung Description | Gerätetyp Device type | Vergl.-Nr. Comp.-No. |
|------------|-----------------------|--------------------------|-----------------------|----------------------|
| 1          | 529755                |                          | 100, 105              | 02533                |
| 2          | 529756                |                          | Capuccino             | 00251                |
| 3          | 529748                |                          | Century               | 04656                |

## Dampfrohr (Kugelgelenk)/Steampipe (socket joint)



| Abb. Pict. | Bestell-Nr. Order-No. | Beschreibung Description | Gerätetyp Device type | Vergl.-Nr. Comp.-No. |
|------------|-----------------------|--------------------------|-----------------------|----------------------|
| 1          | 529758                |                          | 200, 205              | 11767                |
| 2          | 529749                |                          | Gradisca              | 10767                |
| 3          | 529750                |                          | Portofino, America    | 06512                |

Passend für/Suitable for Brasilia

## Wasserrohr (Kugelgelenk)/Waterpipe (socket joint)



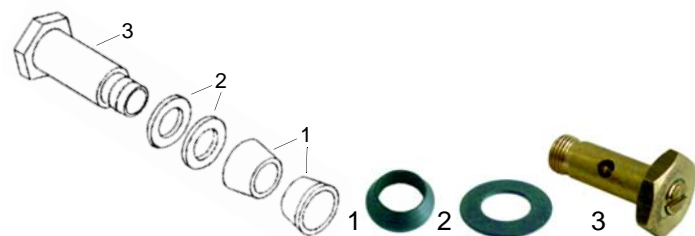
| Pos. Item | Bestell-Nr. Order-No. | Beschreibung Description | Gerätetyp Device type        | Vergl.-Nr. Comp.-No. |
|-----------|-----------------------|--------------------------|------------------------------|----------------------|
| 1         | 529759                |                          | 200, 205, Portofino, America | 06511                |

## Rohr-Zubehör (Endteil)/Pipe accessories (End part)



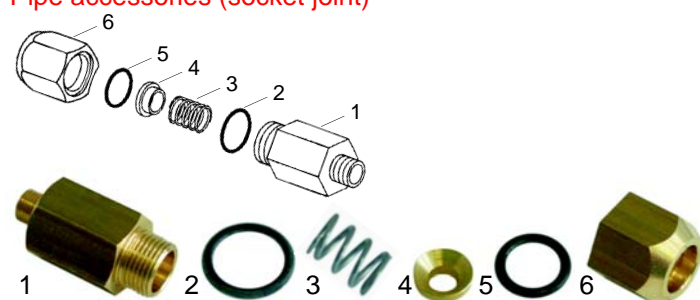
| Abb. Pict. | Bestell-Nr. Order-No. | Beschreibung Description              | Gerätetyp Device type | Vergl.-Nr. Comp.-No. |
|------------|-----------------------|---------------------------------------|-----------------------|----------------------|
| 1          | 529605                | Dichtung<br>Gasket                    |                       | 01405                |
| 2          | 529573                | Dampfdüse<br>Steam nozzle             |                       | 00039                |
| 3          | 529606                | Dampfdüse<br>Steam nozzle             |                       | 11097                |
| 4          | 529602                | Endstück (Wasser)<br>End part (water) |                       | 00188                |
| 5          | 529603                | Scheibe<br>Washer                     |                       | 01301                |
| 6          | 529604                | Endteil<br>End part                   |                       | 00054                |
| 7          | 529607                | Endstück<br>End part                  |                       | 04661                |
| 8          | 529608                | Strahlbrecher<br>Perlator             |                       | 05004                |

## Rohr-Zubehör (Augengelenk)/Pipe accessories (Single banjo body)

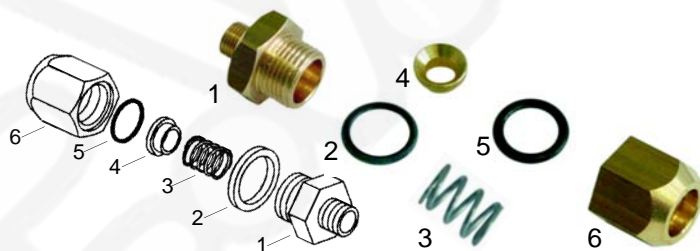


| Abb. Pict. | Bestell-Nr. Order-No. | Beschreibung Description | Gerätetyp Device type | Vergl.-Nr. Comp.-No. |
|------------|-----------------------|--------------------------|-----------------------|----------------------|
| 1          | 528258                | Dichtung<br>Gasket       |                       | 00810                |
| 2          | 528259                | Scheibe<br>Washer        |                       | 01286                |
| 3          | 528260                | Schraube<br>Screw        |                       | 00107                |

## Rohr-Zubehör (Kugelgelenk)/Pipe accessories (socket joint)



| Pos. Item | Bestell-Nr. Order-No. | Beschreibung Description      | Gerätetyp Device type | Vergl.-Nr. Comp.-No. |
|-----------|-----------------------|-------------------------------|-----------------------|----------------------|
| 1         | 528294                | Nippel<br>Nipple              |                       | 10766                |
| 2         | 528293                | Dichtung<br>Gasket            |                       | 06370                |
| 3         | 528296                | Feder<br>Spring               | Gradisca              | 07060                |
| 4         | 528297                | Federscheibe<br>Spring washer |                       | 11029                |
| 5         | 528291                | O-Ring<br>O-ring              |                       | 07001                |
| 6         | 528300                | Überwurfmutter<br>Union nut   |                       | 06509                |



| Pos. Item | Bestell-Nr. Order-No. | Beschreibung Description      | Gerätetyp Device type        | Vergl.-Nr. Comp.-No. |
|-----------|-----------------------|-------------------------------|------------------------------|----------------------|
| 1         | 528295                | Nippel<br>Nipple              | 200, 205, Portofino, America | 07202                |
| 2         | 528293                | Dichtung<br>Gasket            |                              | 06370                |
| 3         | 528296                | Feder<br>Spring               | Gradisca                     | 07060                |
| 4         | 528298                | Federscheibe<br>Spring washer |                              | 06508                |
| 5         | 528291                | O-Ring<br>O-ring              | 200, 205, Portofino, America | 07001                |
| 6         | 528300                | Überwurfmutter<br>Union nut   |                              | 06509                |

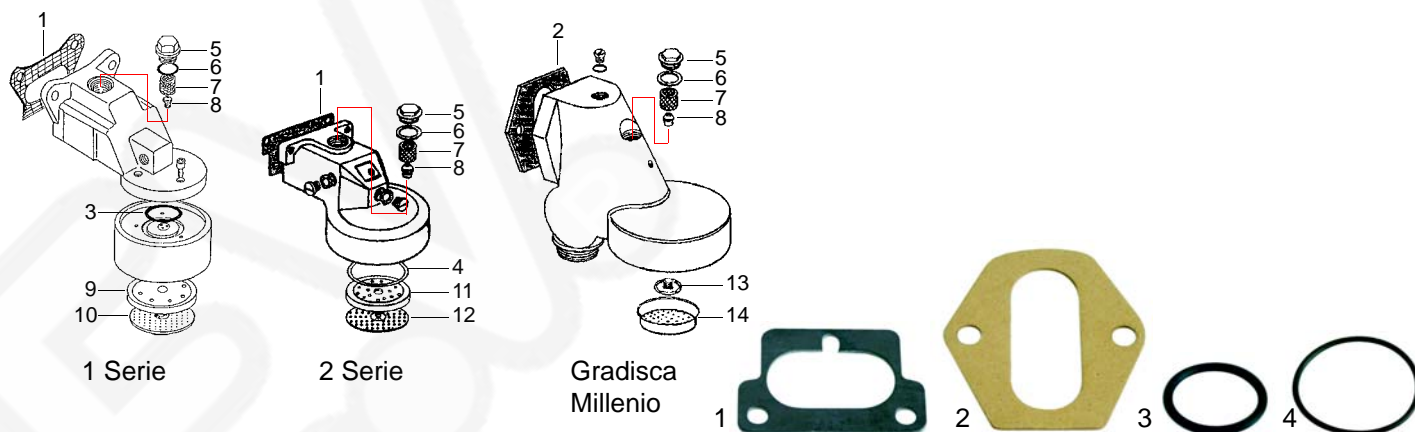
## Ablaufwanne/Drain tap



| Pos. Item | Bestell-Nr. Order-No. | Beschreibung Description            | Gerätetyp Device type | Vergl.-Nr. Comp.-No. |
|-----------|-----------------------|-------------------------------------|-----------------------|----------------------|
| 1         | 528606                | Ablaufwanne<br>Drain tap            |                       | 03172                |
| 2         | 528607                | O-Ring<br>O-ring                    |                       | 01370                |
| 3         | 528608                | Winkelanschluss<br>Corner connector |                       | 03173                |



## Gruppe/Group

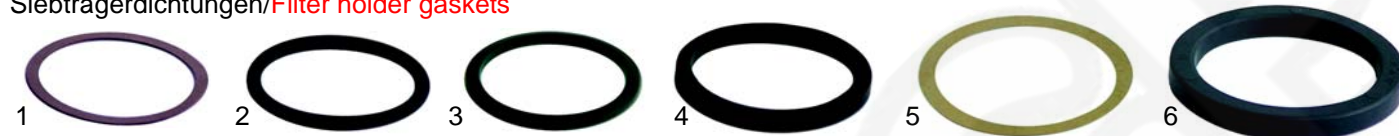


| Abb. Pict. | Bestell-Nr. Order-No. | Beschreibung Description        | Gerätetyp Device type | Vergl.-Nr. Comp.-No. | Abb. Pict. | Bestell-Nr. Order-No. | Beschreibung Description                           | Gerätetyp Device type | Ver.-Nr. Com.-No. |
|------------|-----------------------|---------------------------------|-----------------------|----------------------|------------|-----------------------|--|-----------------------|-------------------|
| 1          | 528141                | Gruppendichtung<br>Group gasket |                       | 00814                | 3          | 528412                | Glockendichtung<br>Bell gasket                     |                       | 00842             |
| 2          | 528406                | Gruppendichtung<br>Group gasket |                       | 04394                | 4          | 528413                | Wasserverteilerdichtung<br>Water dispersion gasket |                       | 03182             |



| Abb. Pict. | Bestell-Nr. Order-No. | Beschreibung Description            | Gerätetyp Device type | Vergl.-Nr. Comp.-No. | Abb. Pict. | Bestell-Nr. Order-No. | Beschreibung Description            | Gerätetyp Device type | Ver.-Nr. Com.-No. |
|------------|-----------------------|-------------------------------------|-----------------------|----------------------|------------|-----------------------|-------------------------------------|-----------------------|-------------------|
| 5          | 528407                | Schraubkappe<br>Screw cap           |                       | 02106                | 10         | 529080                | Dusche<br>Shower                    |                       |                   |
| 6          | 528408                | Dichtung<br>Gasket                  |                       | 01406                | 11         | 528414                | Wasserverteiler<br>Water dispersion |                       | 00021             |
| 7          | 528409                | Sieb<br>Filter                      |                       | 00086                | 12         | 528415                | Dusche<br>Shower                    |                       | 00562             |
| 8          | 528410                | Düse<br>Nozzle                      |                       | 00046                | 13         | 528416                | Wasserverteiler<br>Water dispersion |                       | 04089             |
| 9          | 528411                | Wasserverteiler<br>Water dispersion |                       | 04087                | 14         | 528417                | Dusche<br>Shower                    |                       | 04214             |

## Siebträgerdichtungen/Filter holder gaskets



| Abb. Pict. | B.-Nr. O.-No. | Beschreibung Description  | Abb. Pict. | B.-Nr. O.-No. | Beschreibung Description   | Ver.-Nr. Com.-No. |
|------------|---------------|---|------------|---------------|--|-------------------|
| 1          | 528046        | Distanzeinlage, 66 x 58mm (1 Serie)<br>Shirn gasket (1 serie)   | 5          | 528050        | Distanzeinlage, 71 x 58mm (2 Serie)<br>Shirn gasket, 71 x 58mm (2 series)                          | 04368             |
| 2          | 528045        | Siebträgerdichtung, O-Ring, 66x56x5,34mm (1 Serie)<br>Holder gasket, O-ring, 66 x 56 x 5,34mm (1 serie) | 6          | 528040        | Siebträgerdichtung, 70 x 57 x 8mm (2 Serie)<br>Holder gasket, O-ring, 70 x 57 x 8mm (2 serie)      | 01393,<br>04408   |
| 3          | 528067        | Siebträgerdichtung, konisch, 66 x 56 x 6mm (1 Serie)<br>Holder gasket, conical, 66 x 56 x 6mm (1 serie) | 5          | 528033        | Distanzeinlage, 73 x 59mm (Gradisca)<br>Shirn gasket, 73 x 59mm (Gradisca)                         |                   |
| 4          | 528043        | Siebträgerdichtung, flach, 66 x 56 x 6mm (1 Serie)<br>Holder gasket, flat, 66 x 56 x 6mm (1 serie)      | 6          | 528030        | Siebträgerdichtung, 73 x 57 x 8mm (Gradisca)<br>Holder gasket, O-ring, 73 x 57 x 5,34mm (Gradisca) |                   |

## Siebe/Filter



| Abb. Pict. | Bestell-Nr. Order-No. | Beschreibung Description                 | Gerätetyp Device type | Vergl.-Nr. Comp.-No. | Abb. Pict. | Bestell-Nr. Order-No. | Beschreibung Description                     | Gerätetyp Device type | Vergl.-Nr. Comp.-No. |
|------------|-----------------------|--|-----------------------|----------------------|------------|-----------------------|--|-----------------------|----------------------|
| 1          | 529023                | Blindfilter<br>Blindfilter               |                       | 00564                | 3          | 529014                | Sieb, 2 Tassen (12g)<br>Filter, 2 cups (12g) |                       | 01703                |
| 2          | 529012                | Sieb, 1 Tasse (6g)<br>Filter, 1 cup (6g) |                       | 01702                | 3          | 529013                | Sieb, 2 Tassen (14g)<br>Filter, 2 cups (14g) |                       | 00561                |
| 2          | 529011                | Sieb, 1 Tasse (7g)<br>Filter, 1 cup (7g) |                       | 00560                | 4          | 529079                | Siebträgerfeder<br>Filterholder spring       |                       | 00862<br>02233       |

## Siebträger/Filterholders



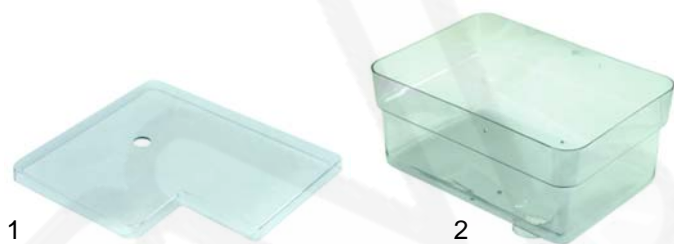
| Abb. Pict. | Bestell-Nr. Order-No. | Beschreibung Description             | Gerätetyp Device type | Vergl.-Nr. Comp.-No. | Abb. Pict. | Bestell-Nr. Order-No. | Beschreibung Description             | Gerätetyp Device type            | Vergl.-Nr. Comp.-No. |
|------------|-----------------------|--------------------------------------|-----------------------|----------------------|------------|-----------------------|--------------------------------------|----------------------------------|----------------------|
| 1          | 529042                | Siebträger<br>Filterholder           | Century               | 00028                | 4          | 529041                | Siebträger, M12<br>Filterholder, M12 | Portofino,<br>Firenze, Gradisca, | 04106<br>02151       |
| 2          | 112014                | Griff<br>Knob                        | Century               |                      | 5          | 529044                | Griff, M12<br>Knob, M12              | 100, 105, 200, 205               | 06355                |
| 3          | 529059                | Siebträger, M12<br>Filterholder, M12 |                       |                      |            |                       |                                      |                                  |                      |

## Ausläufe/Spouts

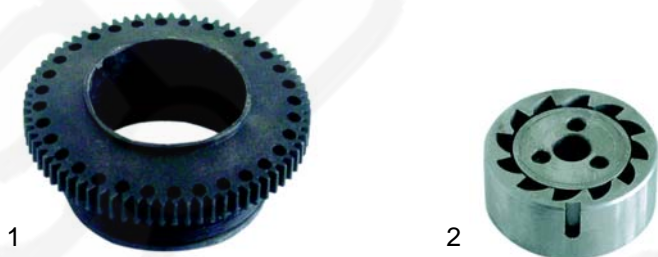


| Abb. Pict. | B.-Nr. O.-No. | Beschreibung Description                                  | Gerätetyp Device type | V.-Nr. C.-No. | Abb. Pict. | B.-Nr. O.-No. | Beschreibung Description                                | Gerätetyp Device type | V.-Nr. C.-No. |
|------------|---------------|---|-----------------------|---------------|------------|---------------|---|-----------------------|---------------|
| 1          | 529002        | Auslauf 3/8", 1 Weg kurz<br>Spout 3/8", one way short     |                       | 00032         | 4          | 529007        | Auslauf 3/8", 2 Wege kurz<br>Spout 3/8", two ways short |                       | 00031         |
| 2          | 529001        | Auslauf 3/8", 1 Weg lang<br>Spout 3/8", one way long      |                       |               | 5          | 529006        | Auslauf 3/8", 2 Wege lang<br>Spout 3/8", two ways long  |                       |               |
| 3          | 529003        | Auslauf 3/8", 1 Weg gebogen<br>Spout 3/8", one way curved |                       | 00056         | 6          | 529008        | Auslauf 3/8", 2 Wege kurz<br>Spout 3/8", two ways short |                       | 00036         |

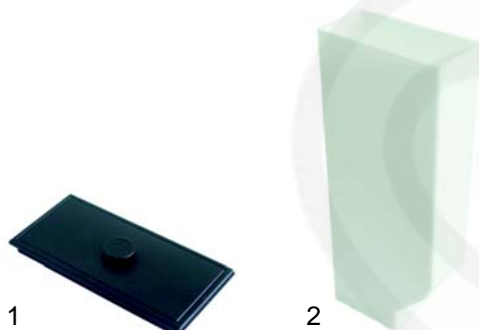
## Mahlssysteme (integriert)/Grinding systems (integrated)



| Abb. Pict. | B.-Nr. O.-No. | Beschreibung Description                                  | Gerätetyp Device type | V.-Nr. C.-No. |
|------------|---------------|---|-----------------------|---------------|
| 1          | 527310        | Deckel/Kaffeebohnenbehälter<br>Cap/coffee beans container | Office                | 10514         |
| 2          | 527309        | Kaffeebohnenbehälter<br>coffee beans container            | Office                | 10513         |



| Abb. Pict. | B.-Nr. O.-No. | Beschreibung Description                                 | Gerätetyp Device type | V.-Nr. C.-No. |
|------------|---------------|--|-----------------------|---------------|
| 1          | 527402        | Einstellscheibe<br>Setting washer                        | Office                | 11593         |
| 2          | 527200        | Mahlscheibenpaar/konisch<br>Grinding washer pair/conical | Office                | 11799         |



| Abb. Pict. | B.-Nr. O.-No. | Beschreibung Description                     | Gerätetyp Device type | V.-Nr. C.-No. |
|------------|---------------|--|-----------------------|---------------|
| 1          | 527308        | Deckel/Wasserbehälter<br>Cap/water container | Office                | 10193         |
| 2          | 527307        | Wasserbehälter<br>Water container            | Office                | 10192         |